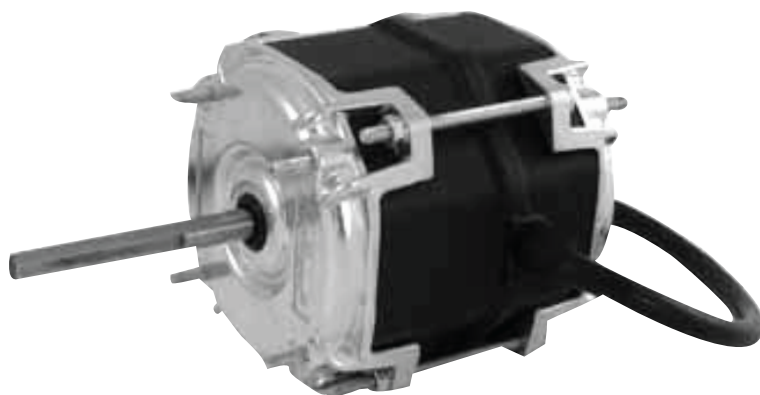


OMNIDRIVE

ECM Evaporator Fan Motors for Commercial Refrigeration Applications
Energy Efficient Electronically Commutated Brushless DC Motors



Up to 70% Efficiency!

- Cost Effectiveness, Competitively Priced For Low Initial Investment
- Energy & Cost Saving, Payback In Less Than One Year
- CO² Reduction, Eco-Friendly Technology
- ECR Motors Are Ideal For Retrofit & New Installations
- Clockwise Shaft End Rotation, 19" Sleeved Leads With 2 Pin Plug
- Standard 5/16" Shaft Diameter, 2-1/2" Length With 1-3/4" Flat
- Moisture & Humidity Resistant, IP42 Enclosure Rating
- Operating Temperature Range of -30°C to +40°C (-22°F to 104°F)
- Input Voltage Range For ECR501 Motor is 100V...127V; ECR502 Motor is 190V...254V
- Drop In Replacement For Traditional Shaded Pole & P.S.C. Evaporator Fan Motors
- Reduce Inventories; One Motor Replaces 1/20HP (35W) & 1/15HP (50W) 1550 RPM EM Designs
- Flexible Mounting With 4 Extended 8-32 UNC Threaded Thru-Bolts on 2.84" B.C.D. at Both Ends
- Fully Enclosed, Long Life Ball Bearings
- Automatic Thermal Overload/Electronic Protection



Stock #	Enclosure	Watts	Volts	Amps.	RPM	"A"	Shaft	Rotation	Industry Reference
ECR501 •	TEAO	50	115	1.30	1550	3.58"	5/16" x 2-1/2"	CWSE	R358, R1052, R90572, D1124, 1043336 5101, 5103, E1058, E1052
ECR502 •	TEAO	50	208-240	0.60	1550	3.58"	5/16" x 2-1/2"	CWSE	R359, R1053, R90573, D1126, 1043766 5201, 5203, E1059, E1053



UNIVERSAL ELECTRIC MOTORS

DIVISION OF 1279311 ONTARIO INC.

6200 Dixie Road, Unit 1, Mississauga, Ontario, L5T 2E1

Tel: (905) 670-3380 - Toll free: 1-877-670-3380 - Fax: (905) 670-7637

WWW.UEM.CA - INFO@UEM.CA

