

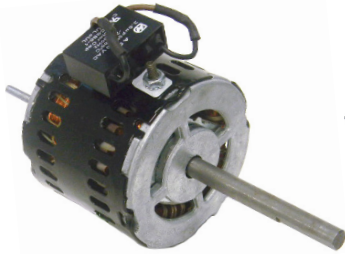
OMNIDRIVE

Broan

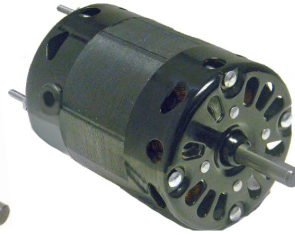
OEM Replacement Motors



30080058



99080481 - 99080482



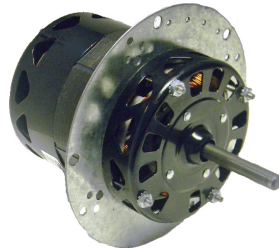
99080483 - 99080484 - 99080485



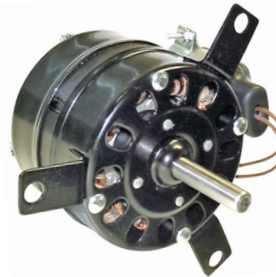
99080486 - 99080487 - 99080488



SS324



16230



30080135



SS9316 - SS9317

- Drop in Replacements for many Broan OEM Motors
- Shaded Pole & P.S.C. Designs
- Open or TEAO Construction
- Long Life Self-Aligning Sleeve or Sealed Ball Bearings
- Wiring Harness with Plugs Supplied When Required
- (*) Indicates Motors are P.S.C Design
- (●) Indicates Motors are Ball Bearing
- (~) Indicated Motors are Double Shafted

Stock #	Diameter	HP	Volts	Amps.	RPM	"A"	Shaft	Rotation	Replaces
30080058	3.3"	1/100	115	0.61	1050	2-1/2"	5/16" x 1-7/8"	CCWSE	30080058, JA2C290, JA2C291
99080481 *	3.3"	1/200	120	0.43	648	2.73"	3/8" x 3.25"	CCWSE	JA2R322
99080482 *	3.3"	1/70	120	0.56	745	2.87"	3/8" x 3.00"	CCWSE	JA2R321
99080483	3.3"	1/25	120	1.60	1550	4.37"	3/8" x 1.45"	CCWSE	JA2Y043
99080484	3.3"	1/20	120	2.00	1550	4.37"	3/8" x 1.45"	CCWSE	JA2Y045
99080485	3.3"	1/20	120	2.60	1550	4.37"	3/8" x 1.45"	CCWSE	JA2Y044
99080486	3.3"	1/20	120	0.90	1625	4.44"	3.98" x 3/8" x 3.98"	CWLE	JE2G095
99080487 ~*	3.3"	1/12	120	2.00	1625	4.09"	4.14" x 3/8" x 4.14"	CWLE	JE2J051, JE2J066
99080488 ~*	3.3"	1/7	120	2.70	1625	4.09"	4.14" x 3/8" x 4.14"	CWLE	JE2J052
SS324	3.3"	1/25	115	2.10	1550	2.92"	1.95" x 5/16" x 1.95"	CWLE	99080151, 99080152, 30080059, 30080060
16230 ●	4.1"	1/8	115	3.40	1550	4.65"	3/8" x 2.40"	CWSE	CB2J088
30080135 *	4.4"	1/10	120	1.80	1050	3-1/2"	1/2" x 2-3/8"	CWSE	30080135
SS9316	5.0"	---	115	3.40	1100	2-1/4"	1/2" x 3.00"	CWSE	97009316
SS9317	5.0"	---	115	4.30	1100	2-5/8"	1/2" x 2-5/8"	CWSE	97009317, 99080267



UNIVERSAL ELECTRIC MOTORS

DIVISION OF 1279311 ONTARIO INC.

6200 Dixie Road, Unit 1, Mississauga, Ontario, L5T 2E1

Tel: (905) 670-3380 - Toll free: 1-877-670-3380 - Fax: (905) 670-7637

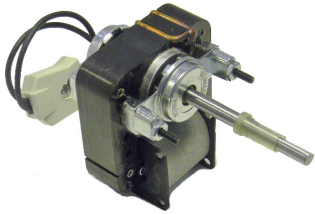
WWW.UEM.CA - INFO@UEM.CA



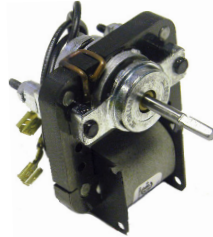
OMNIDRIVE

Broan - Nutone

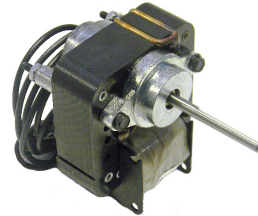
OEM Replacement Motors



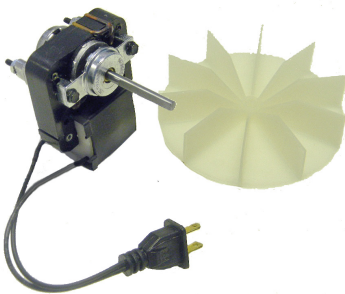
SS601 - SS603 - SS613



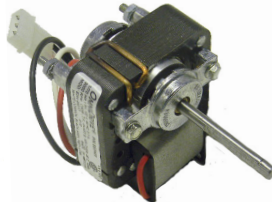
SS604 - SS611 - SS3103



SS605 - SS610



SS3100



SS3101



SS3670



SS201 - SS202 - SS203
SS207

- Drop in Replacements for many Broan & Nutone OEM Motors
- Shaded Pole & P.S.C. Designs
- Open or TEAO Construction
- Long Life Self-Aligning Sleeve or Sealed Ball Bearings
- Wiring Harness with Plugs Supplied When Required

Stock #	Diameter	HP	Volts	Amps.	RPM	"A"	Shaft	Rotation	Replaces
SS601	Skeleton	---	120	0.75	3000	1.89"	1/4" x 2-5/16"	CCWSE	30070007, 162
SS603	Skeleton	---	120	0.63	2400	1.72"	7/32" x 2-1/8"	CCWSE	81096, 81795, 81826, 81827, 81993, 81994, K2230
SS604	Skeleton	---	120	0.78	2700	1.72"	3/16" x 1.26"	CCWSE	81058
SS605	Skeleton	---	120	1.00	2800	1.97"	3/16" x 1.74"	CCWSE	Vent Fan
SS610	Skeleton	---	120	1.20	2400/2	1.97"	7/32" x 1.21"	CCWSE	300990011, 12, 51000
SS611	Skeleton	---	120	0.60	1500	0.60"	3/16" x 1.65"	CCWSE	3008001
SS613	Skeleton	---	120	0.56	1600	1.72"	7/32" x 2.50"	CCWSE	64620
SS3100	Skeleton	---	115	0.59	3000	1.72"	7/32" x 1-11/16"	CCWSE	C-65878
SS3101	Skeleton	---	120	0.70	3000/2	2.10"	7/32" x 1-15/16"	CWSE	C-52736, C-27987
SS3103	Skeleton	---	120	0.81	3000	1.85"	7/32" x 2-7/16"	CCWSE	C-63676, C-68626, 27
SS3670	Skeleton	---	120 / 240	0.40 / 0.26	3000	1.76"	3/16" x 1-9/16"	CWSE	Vent Fan Kit
SS201	3.3"	1/50	115	0.90	1430	2.12"	1/4" x 2.20"	CCWSE	18692
SS202	3.3"	1/40	115	1.00	1550	2.47"	1/4" x 1.30"	CCWSE	2868-407, 409,076, 82879
SS203	3.3"	1/70	115	0.90	1600	2.09"	1/4" x 1.56"	CWSE	Vent Fan
SS207	3.3"	1/80	115	0.80	1600	2.00"	1/4" x 1.56"	CCWSE	2868-405, 23405, 23388



UNIVERSAL ELECTRIC MOTORS

DIVISION OF 1279311 ONTARIO INC.

6200 Dixie Road, Unit 1, Mississauga, Ontario, L5T 2E1

Tel: (905) 670-3380 - Toll free: 1-877-670-3380 - Fax: (905) 670-7637

WWW.UEM.CA - INFO@UEM.CA



OMNIDRIVE

Broan - Nutone

OEM Replacement Motors



SS506 - SS232



SS209 - SS214 - SS219
SS801



SS304 - SS305



SS307



SS311 - SS315 - SS355



SS440



SS467

- Drop in Replacements for many Broan & Nutone OEM Motors
- Shaded Pole & P.S.C. Designs
- Open or TEAO Construction
- Long Life Self-Aligning Sleeve or Sealed Ball Bearings
- Wiring Harness with Plugs Supplied When Required
- (●) Indicates Motors are Ball Bearing
- (~) Indicated Motors are Double Shafted

Stock #	Diameter	HP	Volts	Amps.	RPM	"A"	Shaft	Rotation	Replaces
SS209	3.3"	1/50	115	0.85	1550	2.34"	1/4" x 1.56"	CCWSE	80230, 80469
SS214	3.3"	1/40	115	0.80	2700	2.83"	1/4" x 1.45"	CCWSE	Vent Fan
SS219	3.3"	1/20	115	1.80	1550	2.84"	5/16" x 2.20"	CCWSE	80405, 80747
SS232	3.3"	1/70	120	0.70	2800	2.56"	1/4" x 1.28"	CWSE	80215, 80675, 26733
SS304	3.3"	1/40	115	0.89	1550	2.47"	1/4" x 1.60"	CCWSE	Vent Fan
SS305	3.3"	1/50	115	1.00	2800	2.33"	1/4" x 1.50"	CCWSE	80695
SS307	3.3"	1/25	115	1.45	3000	3.30"	1/4" x 1.26"	CWSE	85680
SS311	3.3"	1/100	115	0.65	1550	2.10"	1/4" x 1.20"	CCWSE	2868-505-022
SS315	3.3"	1/100	120	0.50	1550	2.09"	1/4" x 1.20"	CWSE	2868-507-098
SS355 ●	3.3"	1/15	115	2.20	1550	3.10"	5/16" x 1.90"	CCWSE	81918
SS440 ~	3.3"	1/20	120	1.60	1550	3.16"	3.80" x 5/16" x 3.80"	CWLE	81905, 80734, 26757
SS467 ~	3.3"	1/20	120	1.40	1550	3.10"	1.70" x 5/16" x 1.70"	CWLE	30080059, 30080060
SS506	3.3"	1/140	115	0.50	1400	1.87"	1/4" x 2.00"	CCWSE	2868-402-001, 004
SS801	3.3"	1/45	115	0.90	1550	2.25"	5/16" x 1.87"	CCWSE	118013, 18692, 26754, 80101, 80469



UNIVERSAL ELECTRIC MOTORS

DIVISION OF 1279311 ONTARIO INC.

6200 Dixie Road, Unit 1, Mississauga, Ontario, L5T 2E1

Tel: (905) 670-3380 - Toll free: 1-877-670-3380 - Fax: (905) 670-7637

WWW.UEM.CA - INFO@UEM.CA

