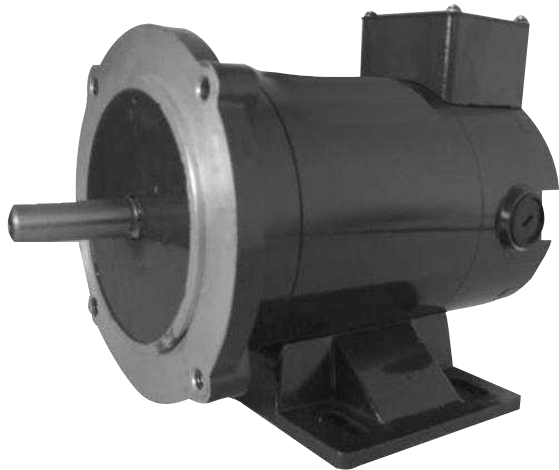
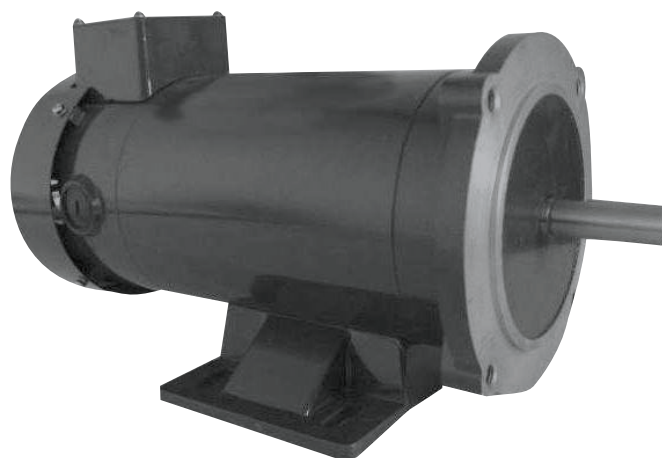


OMNIDRIVE

Permanent Magnet DC Motors TEFC and TENV Construction



Type A



Type B

- 90 & 180 Volts
- Ball Bearing
- Continuous Duty
- Class 'F' Insulation
- UL Listed & CSA Approved
- 40°C Ambient
- 1725 RPM
- 56C or 143/5TC Frame
- Removable Rigid Base
- TENV (Type A) - TEFC (Type B)
- 20:1 C.T. Speed Range
- Reversible

Stock #	Frame	HP	Volts	Amps.	"C"	Type	Enclosure	Comments
DC500	56C	1/4	90	2.60	10.25"	A	TENV	Brush Number BR56
DC501	56C	1/3	90	3.50	10.25"	A	TENV	Brush Number BR56
DC502	56C	1/2	90	5.00	12.25"	B	TEFC	Brush Number BR56
DC503	56C	3/4	90	7.60	13.75"	B	TEFC	Brush Number BR56
DC504	56C	1	90	10.00	14.75"	B	TEFC	Brush Number BR56
DC511	56C	1/3	180	1.70	10.25"	A	TENV	Brush Number BR56
DC512	56C	1/2	180	2.50	12.25"	B	TEFC	Brush Number BR56
DC513	56C	3/4	180	3.80	13.75"	B	TEFC	Brush Number BR56
DC514	56C	1	180	5.00	14.75"	B	TEFC	Brush Number BR56
DC515	145TC	1.5	180	8.00	15.50"	B	TEFC	Brush Number BR140
DC516	145TC	2	180	9.50	18.75"	B	TEFC	Brush Number BR140
DC517	145TC	3	180	14.00	19.25"	B	TEFC	Brush Number BR140



UNIVERSAL ELECTRIC MOTORS

DIVISION OF 1279311 ONTARIO INC.

6200 Dixie Road, Unit 1, Mississauga, Ontario, L5T 2E1

Tel: (905) 670-3380 - Toll free: 1-877-670-3380 - Fax: (905) 670-7637

WWW.UEM.CA - INFO@UEM.CA

