

OMNIDRIVE

STOCK MOTOR CATALOG

OD-513



OMNIDRIVE

WHAT'S NEW INSIDE



NEW OEM REPLACEMENT MOTORS

BROAN, GREENHECK, LOREN COOK, PENN VENTILATOR
TJERNLUND, VENMAR, VANEE & MORE..

ALUMINUM FRAME TEFC MOTORS

56, 56C & 56J THREE PHASE - REMOVABLE FEET
F-1, F-2 & F-0 MOUNTING - INVERTER DUTY
56 & 56H (5/8" SHAFT) - 56HZ (7/8" SHAFT)



STAINLESS STEEL MOTORS

1/3 TO 10 HP - 3600, 1800, 1200 RPM - 56C TO 215TC
TEFC & TENV ENCLOSURES - RIGID BASE



RIGHT ANGLE WORM GEAR REDUCERS

56C INPUT FLANGE - ALUMINUM ALLOY HOUSING
HOLLOW, SINGLE OR DOUBLE OUTPUT SHAFT



A COMPLETE LISTING OF NEW MODELS IS AVAILABLE IN THE INDEX (PAGE 65 - 69)

INDICATED BY SYMBOL "‡"

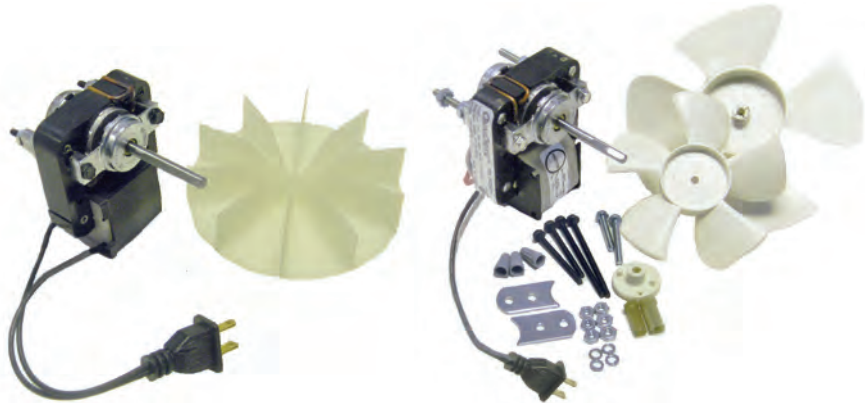
TABLE OF CONTENTS

	PAGE
'C' Frame Skeleton Motors.....	1
Crossflow & Centrifugal Blowers.....	2
Blower Reference Dimension Chart.....	3
Axial Fans & Accessories + Inline Centrifugal Fans.....	4
Unit Bearing Fan Motors.....	5
ECM Evaporator Fan Motors & ECM Unit Bearing Style Motors.....	6
3.3" Diameter Hubless Fan Motors.....	7
3.3" Diameter Draft Inducer Motors.....	8
3.3" Diameter Refrigeration Motors.....	9
3.3" Diameter Open Construction (115V).....	10
3.3" Diameter Open Construction (230V + Double Shaft).....	11
3.3" Diameter Totally Enclosed Construction (115V).....	12
3.3" Diameter Totally Enclosed Construction (230V + Double Shaft).....	13
4.1" Diameter Open & Totally Enclosed Construction.....	14
5" Diameter Open Construction.....	15
5" Diameter Totally Enclosed Construction.....	16
OEM Replacement Motors.....	17 - 39
48 Frame - Single Phase Belt Drive Motors.....	40
48 Frame - 575 Volt Direct Drive Blower Motors.....	41
48 Frame - Flex Mount & Direct Drive Blower Motors	42
48 Frame - Condenser Fan Motors.....	43
48 Frame - Unit Heater & Exhaust Fan Motors.....	44
48 Frame - Pedestal Fan Air Circulator Motors.....	44
General Purpose - Single Phase Motors - Rolled Steel TEFC.....	45
General Purpose - Single Phase Motors - Rolled Steel ODP & TEFC.....	46
56 Frame - Three Phase Motors - Rolled Steel ODP.....	47
NEMA Premium - Three Phase Motors - Rolled Steel ODP.....	48
56 & 56HZ Frame - Three Phase Motors - Aluminum Frame TEFC.....	49 - 50
56C & 56 HCZ Frame - Three Phase Motors - Aluminum Frame TEFC.....	51 - 52
56 Frame - Three Phase Motors - Rolled Steel TEFC.....	53
NEMA Premium - Three Phase Motors - Rolled Steel TEFC.....	54
NEMA Premium - Three Phase Motors - Cast Iron TEFC.....	55
Circulator Pump Motors - Single Phase Motors - ODP.....	56
Jet Pump Motors - Three Phase Motors - Aluminum Frame TEFC.....	57
Close Coupled Pump Motors - Three Phase Motors - Rolled Steel ODP & TEFC.....	58
Permanent Magnet DC Motors.....	59
Stainless Steel Motors - Three Phase Motors - TEFC & TENV.....	60
Worm Gear - Right Angle Speed Reducers.....	61
NEMA Transition Motor Bases.....	62
NEMA Adjustable Motor Bases - Single Adjusting Bolt.....	63
NEMA Adjustable Motor Bases - Double Adjusting Bolt.....	64
Index - Stock Number to Page.....	65 - 69

'C' Frame - Skeleton Motors Heating, Refrigeration & Ventilation Motors

Features:

- All Angle Mount
- Continuous Duty, Air Over
- Class 'B' Insulation
- UL Listed & CSA Approved
- Mechanically Reversible
- Shaded Pole
- Impedance or Thermally Protected
- One & Two Speed
- 60 Hz.
- Sleeve Bearings



SS3100

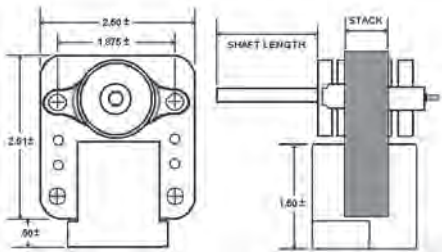
SS3670



SS617 - SS630 - SS3103
SS604 - SS611

SS601 - SS603 - SS613

SS605



SS610



SS3101



SS635

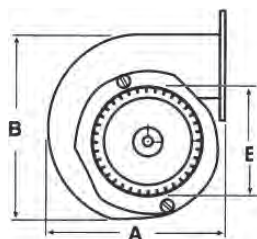
Stock #	Stack	Volts	Amps.	RPM	Rotation	Shaft	Comments
SS617	3/8"	208-240	0.22	1900	CWSE	3/16" x 1-1/4"	"C" Groove on Shaft, 12" Leads w/ Terminals
SS611	1/2"	120	0.60	1500	CCWSE	3/16" x 1-5/8"	"C" Groove on Shaft, 8" Cord & Plug
SS630	1/2"	120	0.75	3000	CCWSE	7/32" x 1-13/16"	"C" Groove on Shaft, 6" Cord & Plug
SS603	5/8"	120	0.63	2400	CCWSE	7/32" x 2-1/8"	"C" Groove on Shaft, 10" Cord & Plug
SS604	5/8"	120	0.78	2700	CCWSE	3/16" x 1-3/16"	Round Shaft 9" Cord & Plug
SS613	5/8"	120	0.56	1600	CCWSE	7/32" x 2-7/16"	2 "C" Groove on Shaft 10" Cord & Plug
SS3100	5/8"	115	0.59	3000	CCWSE	7/32" x 1-11/16"	Includes Paddle Fan Blade
SS3670	5/8"	120 / 240	0.40 / 0.26	3000	CWSE	3/16" x 1-9/16"	Fan Kit and Mounting Accessories
SS601	3/4"	120	0.75	3000	CCWSE	1/4" x 2-5/16"	Includes 1/4" to 5/16" Bushing, 6" Cord & Plug
SS3103	3/4"	120	0.81	3000	CCWSE	7/32" x 2-7/16"	Breakaway Shaft 15" Cord & Plug
SS605	5/8"	120	1.00	2800	CCWSE	3/16" x 1-3/4"	30" Leads
SS610	7/8"	120	1.20 / 0.75	2400 / 2	CCWSE	7/32" x 1-3/16"	"C" Groove on Shaft - 2 Speed
SS3101	7/8"	120	0.70	3000 / 2	CWSE	7/32" x 1-15/16"	"C" Groove on Shaft - 2 Speed
SS635	1-1/2"	208 - 240	1.20 / 0.83	1550	CCWSE	1/4" x 1-1/2"	12" Leads with Terminals

Crossflow & Centrifugal Blowers General Purpose & OEM Replacement

Refrigeration, Food Service, Gas/Wood Burning Stoves and Fireplaces

Features:

- All Angle Mount
- Continuous Duty, Air Over
- Class 'B' Insulation
- UL Listed & CSA Approved
- Shaded Pole
- Thermally Protected
- Single, Two & Three Speed Models
- Variable Speed Model
- 60 Hz.
- Sleeve Bearings
- 115 Volts



Stock #	CFM	HP	Amps.	RPM	A	B	E	Comments
UB5	50	1/125	0.40	1550	6-3/8"	5-3/4"	3-3/4"	32" Leads - T.E. Motor
UB3	100	1/50	0.80	3000	6-1/2"	6-7/8"	3-3/8"	6' Cord & Plug
UB4 ●	100	1/40	0.88	3000	6-1/4"	5-1/2"	3-1/2"	17" Leads - T.E. Motor
UB33	100	1/50	0.88	3200	6-7/8"	6-7/8"	3-3/4"	6' Cord & Plug - Variable Speed
UFB189	100	1/50	1.10	3000	7.10"	7.61"	4.81"	Hot Water Heater
UB579	100	1/35	1.20	3000	7.13"	7.67"	4.70"	Radiant Tube Heater
UFB500	140	1/30	1.10	2860	6-1/2"	6-1/2"	3-1/8"	Conduit Box
UB160	160	1/33	1.10	1550	8-1/4"	8-1/8"	4-1/4"	Leads - No Conduit Box
UB168	168	----	1.00	3000	4-1/8"	4.00"	3-1/4"	24" Cord & Plug
UB1	200	1/30	1.20	2700	6-1/8"	5-1/2"	3-1/4"	6' Cord & Plug
UB200T-2	200	1/100	0.60	1600	----	----	----	3 Speed Switch w/ Cord & Plug, 8" Heat Sensor Leads
UB265	265	1/25	1.40	1550	8-1/2"	9-1/4"	4-1/4"	Conduit Box
UB465	465	1/15	2.60	1550	8-1/2"	9-1/4"	5-5/8"	2 Speed - Conduit Box - Heat Sink

(●) Ball Bearing
(*) Permanent Split Capacitor Design

Crossflow & Centrifugal Blowers

Blower Reference Dimension Chart

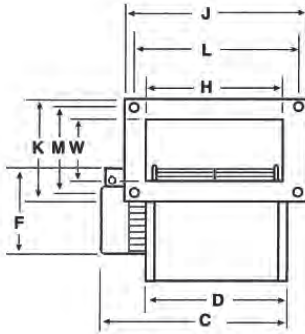


Figure 1

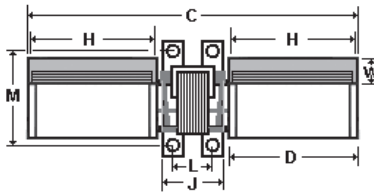


Figure 2

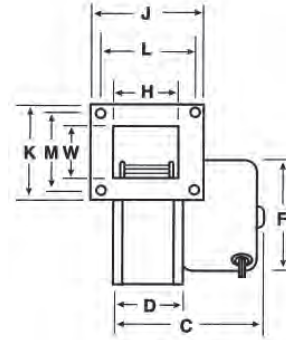


Figure 3

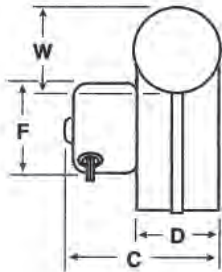


Figure 4

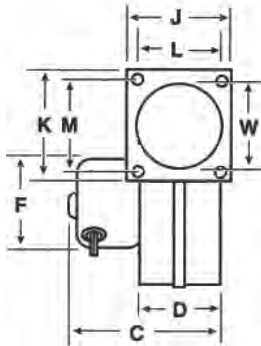


Figure 5

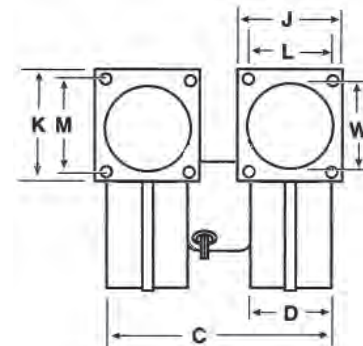


Figure 6

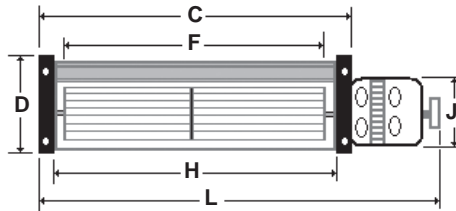


Figure 7

Stock #	CFM	Figure	C	D	F	H	L	J	K	M	W
UB5	50	5	4-3/4"	2-1/4"	3-3/8"	----	1-7/8"	2-3/4"	3-1/2"	2-1/2"	2.00"
UB3	100	5	5-1/2"	2-5/16"	3-3/8"	----	2-1/4"	3.00"	3.00"	2-1/4"	2.00"
UB4 ●	100	4	6-3/8"	2-1/4"	3-3/8"	----	----	----	----	----	2-1/8"
UB33	100	5	6-3/4"	2-1/4"	3-3/8"	----	2-1/4"	3.00"	3.00"	2-1/4"	2.00"
UFB189	100	3	5-3/4"	1-3/4"	3-3/8"	1.65"	----	2-3/4"	3.76"	1.00"	2.57"
UB579	100	3	5 3/8"	1.70"	3-3/8"	1.78"	3.01"	4-1/2"	5-1/8"	3.01"	2.46"
UFB500	140	3	6.00"	2-1/2"	3-3/8"	2-1/2"	4.00"	5-1/8"	4.00"	1-1/2"	2-1/2"
UB160	160	3	6-3/4"	3-1/2"	3-3/8"	3-1/4"	4-1/8"	4-3/4"	4-3/4"	1-1/2"	3-1/4"
UB168	168	2	12-1/4"	4-5/8"	3-3/8"	4-1/2"	1-5/8"	2-5/8"	----	3-5/8"	1.00"
UB1	200	6	8-1/2"	2-3/4"	3-3/8"	----	2-1/4"	3.00"	3.00"	2-1/4"	2.00"
UB200T-2	200	7	11-1/2"	4-1/4"	9-1/2"	10-1/4"	15.00"	3-3/8"	----	----	----
UB265	265	3	7.00"	1-1/4"	3-3/8"	4.00"	4-3/4"	5-1/2"	5.00"	4-1/4"	3-1/2"
UB465	465	1	10-1/2"	8.00"	3-3/8"	7-7/8"	8-3/4"	9-1/2"	5.00"	4-3/8"	3-5/8"



BF51 - BF52



BF61 - BF62



BF101 - BF102



BFC24 - BFC36



FG5 - FG6 - FG10

Includes 24" Lead Assembly

Stock #	CFM	Watts	Volts	Amps.	Dimensions	Hz	Replaces
BF51	100	21/19	115	0.40/0.28	4-11/16" x 4-11/16" x 1.50"	50/60	4WT42, RF205
BF61 ●	240	30/29	115	0.28/0.25	6-3/4" x 6-1/8" x 2.00"	50/60	4C720, 4WT42, RF240
BF101 ●	560	36	115	0.35	10" x 10" x 3.50"	50/60	4C688, 4WT44, RF250
BF52	100	25/19	230	0.20/0.14	4-11/16" x 4-11/16" x 1.50"	50/60	4WT33, RF215
BF62 ●	240	29/28	230	0.13/0.12	6-3/4" x 6-1/8" x 2.00"	50/60	4WT43, RF245
BF102 ●	560	36	230	0.19	10" x 10" x 3.50"	50/60	4C829, 4WT45, RF255

Stock #	Description
BFC24	Axial Fan Lead Assembly 24 Inches
BFC36	Axial Fan Lead Assembly 36 Inches
FG5	Fan Guard for 4-11/16" (BF51 & BF52)
FG6	Fan Guard for 6-3/4" (BF61 & BF62)
FG10	Fan Guard for 10" (BF101 & BF102)

Inline Centrifugal Fans

Ventilation, Exhaust, In-line Boosting, Dryer Vent Boosting and Hydroponics

Features:

- Installs In Any Position
- High Pressure & Volume
- Supplied With 8 Foot Cord & Plug
- Mounting Bracket Included
- Backwards Inclined Fan Blades
- Steel Housing, Baked Powder Coat Finish
- Permanently Sealed Ball Bearings



THREE YEAR WARRANTY

Stock #	Duct Diameter	CFM	Watts	Volts	Amps.	Hz.	dBA
VENT-100 ●	4 INCH	175	98	120	0.97	60	0.90
VENT-150 ●	6 INCH	435	130	120	0.97	60	1.00
VENT-200 ●	8 INCH	745	210	120	1.76	60	1.90
VENT-250 ●	10 INCH	785	230	120	2.00	60	1.90
VENT-315 ●	12 INCH	1075	295	120	2.50	60	2.60

(●) Ball Bearing
(*) Permanent Split Capacitor Design

Unit Bearing Fan Motors Cast Iron - Two Mounting Feet

Features:

- Totally Enclosed Construction
- Cast Iron Construction
- Continuous Duty, Air Over
- Shaded Pole Design
- All Models Include; Vibration Dampening Hub Washer, Speed Nut & 4 Mounting Screws
- 115 & 230 Volt
- UL & CSA Recognized
- Horizontal & Shaft Up Mounting Only



All Models

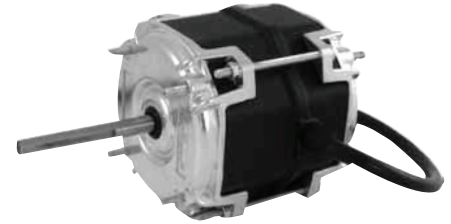
Stock #	Watts	RPM	Volts	Amps.	Rotation	"A"	Rear Mounting Holes
SS5109	2	1550	115	0.25	CWLE	2.39"	3
SS5211	4	1550	115	0.29	CWLE	2.39"	3
SS5212	4	1550	115	0.29	CCWLE	2.39"	3
SS5221	4	1550	230	0.15	CWLE	2.39"	3
SS5222	4	1550	230	0.15	CCWLE	2.39"	3
SS5311	6	1550	115	0.40	CWLE	2.93"	3
SS5312	6	1550	115	0.40	CCWLE	2.93"	3
SS5411	9	1550	115	0.55	CWLE	2.93"	3
SS5412	9	1550	115	0.55	CCWLE	2.93"	3
SS5421	9	1550	230	0.27	CWLE	2.93"	3
SS5422	9	1550	230	0.27	CCWLE	2.93"	3
SS5811	16	1550	115	1.00	CWLE	3.19"	3
SS5812	16	1550	115	1.00	CCWLE	3.19"	3
SS5821	16	1550	230	0.50	CWLE	3.19"	3
SS5822	16	1550	230	0.50	CCWLE	3.19"	3

ECM Evaporator Fan Motors Commercial Refrigeration Applications

Energy Efficient Electronically Commutated Brushless DC Motors

Features:

- Up to 70% Efficiency
- Cost Effectiveness, Competitively Priced for Low Initial Investment
- Energy & Cost Saving, Payback In less than One Year
- CO² Reduction, Eco-Friendly Technology
- ECR Motors are Ideal for Retrofit & New Installations
- Clockwise Shaft End Rotation, 19" Sleeved Leads with 2 Pin Plug
- Standard 5/16" Shaft Diameter, 2-1/2" Length with 1-3/4" Flat
- Moisture & Humidity Resistant, IP42 Enclosure Rating
- Operating Temperature Range of -30°C to +40°C (-22°F to 104°F)
- Input Voltage Range for ECR501 Motor is 100V...127V; ECR502 Motor is 190V...254V
- Drop In Replacement for Traditional Shaded Pole & P.S.C. Evaporator Fan Motors
- Reduce Inventories; One Motor Replaces 1/20HP (35W) & 1/15HP (50W) 1550 RPM Evaporator Motor Designs
- Flexible Mounting with Four Extended 8-32 UNC Threaded Thru-Bolts on 2.84" B.C.D. at Both Ends
- Fully Enclosed, Long Life Ball Bearings
- Automatic Thermal Overload/Electronic Protection



ECR501 - ECR502

Stock #	Enclosure	Watts	Volts	Amps.	RPM	"A"	Shaft	Rotation	Industry Reference
ECR501 •	TEAO	50	115	1.30	1550	3.58"	5/16" x 2-1/2"	CWSE	R358, R1052, R90572, D1124, 1043336 5101, 5103, E1058, E1052
ECR502 •	TEAO	50	208-240	0.60	1550	3.58"	5/16" x 2-1/2"	CWSE	R359, R1053, R90573, D1126, 1043766 5201, 5203, E1059, E1053

ECM Unit Bearing Style Motors Commercial Refrigeration Applications

Energy Efficient Electronically Commutated Brushless DC Motors

Features:

- Up to 70% Efficiency
- Cost Effectiveness, Competitively Priced for Low Initial Investment
- Reduce Inventories, One Motor Covers 4W through 16W Applications
- Energy & Cost Saving, Payback In less than One Year
- CO² Reduction, Eco-Friendly Technology
- Drop In Replacement for Traditional Shaded Pole Unit Bearing Motors
- ECR Motors are Ideal for Retrofit & New Installations
- Clockwise Opposite Shaft End Rotation, 19" Sleeved Leads With 2 Pin Plug
- Rear Mounting with Three Standard 8-32 UNC Threaded Holes
- Foot Mounting with 4 Threaded 8-32 UNC Holes
- Universal Hubless Shaft Accommodates Standard Axial Fan Blades
- Moisture & Humidity Resistant
- Input Voltage Range for ECR161 Motor Is 90V...140V
- Operating Temperature Range of -10°C to +40°C (14°F to 104°F)
- Mounting Shroud & Fan Guard Mounting with Four Extended M4 Threaded Thru-Bolts on Motor Shaft Side
- Fully Enclosed, Long Life Ball Bearings
- Automatic Thermal Overload/Electronic Protection



ECR161

Stock #	Enclosure	Watts	Volts	Amps.	RPM	"A"	Shaft	Rotation	Industry Reference
ECR161 •	TEAO	4...16	120	0.34	1800	2.50"	Hubless	CWOSE	5211, 5311, 5411, 5611, 5811, 5213, 5313, 5413, 5813

(•) Ball Bearing
(*) Permanent Split Capacitor Design

3.3" Diameter Hubless Fan Design

Commercial Refrigeration, Condensers, Unit Coolers & Display Cases

Features:

- Threaded Shaft (5/16") With Speed Nut
- Continuous Duty
- Class 'B' Insulation
- UL Listed & CSA Approved
- Shaded Pole
- Thermally Protected
- 60 Hz
- Totally Enclosed Construction
- Sleeve Bearings



SS124 - SS125



SS101 - SS103 - SS122 - SS137



SS101L - SS103L



SS119 - SS120 - SS133



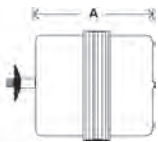
SS250



SS108 - SS123



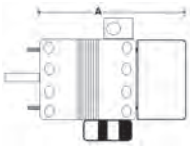
SS127



Stock #	HP	Volts	Amps.	RPM	"A"	Rotation	Comments	Replaces
SS124 •	1/20	115	1.55	1550	2.80"	CWSE	Lyall Cord & Plug / 4 Bolt Mounting	Foster / Dunham Bush / Hussmann
SS133	1/30	115	1.10	1550	2.59"	CWSE	2 Speed	Markhot
SS101	1/45	115	0.90	1550	2.40"	CCWSE	Lyall Cord & Plug / 2 or 3 Bolt Mounting	Foster / Hussmann
SS101L	1/45	115	0.90	1550	2.34"	CCWSE	Lyall Cord & Plug / "L" Mounting Bracket	Foster / Hussmann
SS103	1/45	115	0.90	1550	2.34"	CWSE	Lyall Cord & Plug / 2 or 3 Bolt Mounting	Foster / Hussmann
SS103L	1/45	115	0.90	1550	2.34"	CWSE	Lyall Cord & Plug / "L" Mounting Bracket	Foster / Hussmann
SS137	1/70	115	0.59	1550	2.19"	CCWSE	3 Prong Lyall Cord & Plug / 2 or 3 Bolt Mounting	Coldstream
SS119	1/70	115	0.70	1550	2.25"	CWSE	2 or 3 Bolt Mounting	Foster
SS120	1/70	115	0.62	1550	2.25"	CCWSE	2 or 3 Bolt Mounting	Foster
SS123	1/70	115	0.60	1550	2.59"	CCWSE	Double "U" Bracket	Ideal
SS250	1/70	115	0.65	1550	3.71"	CWSE	3 Bolt Mounting Shaft End / 2 Speed Switch with Cord & Plug	Wood Stove
SS127	1/75	120	0.78	1600	2.00"	CWSE	2 Bolt Mounting Shaft End / Hex Hub Shaft End	Foster
SS108	1/100	115	0.60	1550	2.00"	CWSE	"U" Bracket	Hunter / Ideal / Lear
SS125 •	1/20	230	0.80	1550	2.80"	CWSE	Lyall Cord & Plug / 4 Bolt Mounting	Foster / Hunter / Dunham Bush
SS122	1/60	230	0.35	1550	2.47"	CCWSE	Lyall Cord & Plug / 2 or 3 Bolt Mounting	Coldstream / Foster

Features:

- Continuous Duty
- Class 'B' Insulation
- UL Listed & CSA Approved
- Thermally Protected
- 60 Hz
- Ball Bearings



Stock #	HP	Volts	Amps.	RPM	"A"	Shaft	Rotation	Comments	Replaces
UFM3714 ●*	1/8	115/230	1.6 / 0.8	3200	6.98"	1/4" x 4.00"	REV.	Conduit Box 1/4" to 5/16" Bushing	Carrier / Gen. Replacement
UFM410 ●*	1/10	115/230	1.4 / 0.7	3000	6.98"	1/4" x 3.70"	REV.	Conduit Box - 3 Mounting Lugs Stainless Shaft 1/4" to 5/16" Bushing	Reznor / Fasco
UFM78 ●*	1/10	115/230	1.3 / 0.7	3200	4-1/8"	5/16" x 3.25"	REV.	4 Mounting Studs on each end - No Switch	Reznor / 43846 & 43424
131410 ●*	1/10	115	1.60	3000	4.10"	5/16" x 3.20"	CWLE	No Conduit Box	Reznor / 131410
UFM653 ●	1/12	230/460	0.60	3200	6-3/4"	1/4" x 2.25"	CCWSE	Conduit Box - 1/4" to 5/16" Bushing	Carrier / York
148053 ●*	1/20	115	0.70	3300	4.54"	5/16" x 3.00"	CWSE	4 Mounting Studs	Reznor / 148053
148055	1/33	115	1.00	3300	3.26"	5/16" x 2.00"	CWSE	Sleeve Bearing	Reznor / 148055

(●) Ball Bearing
(*) Permanent Split Capacitor Design

3.3" Diameter Refrigeration Motors

Features:

- GE 11 Frame Replacements
- Open Fan Cooled
- Resilient Rings Included for Base Mounting
- Sleeve & Sealed Ball Bearings



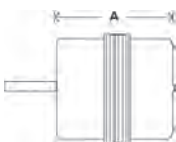
Stock #	HP	Volts	Amps.	RPM	"A"	Shaft	Rotation	Replaces
SS671 •	1/15	115 / 208-230	2.10 / 1.10	1550	4.50"	5/16" x 2.20"	CCWSE	1231, 1331, 1431, 1432
SS672	1/15	115 / 208-230	2.10 / 1.10	1550	4.50"	5/16" x 2.20"	CWSE	1342, 1441, 1442
SS1332 •	1/20	208-230	1.10	1550	4.60"	5/16" x 2.00"	CCWSE	1332

3.3" Diameter Open Construction

Kitchen / Bathroom Fans, Humidifiers / Dehumidifiers,
Unit Heaters, Unit Coolers & Display Cases

Features:

- Continuous Duty
- Class 'B' Insulation
- UL Listed & CSA Approved
- Shaded Pole & P.S.C
- Thermally Protected
- 60 Hz
- Sleeve Bearings



Stock #	HP	Volts	Amps.	RPM	"A"	Shaft	Rotation	Comments	Replaces
SS313 ●	1/15	115	2.20	1550	3.58"	5/16" x 2.75"	CWSE	12" Lyall Cord & Plug	Bohn / Torin / Kraack
SS355 ●	1/15	115	2.20	1550	3.11"	5/16" x 1.90"	CCWSE	Hex Hubs	Nutone
SS358	1/15	115	2.20	1550	3.35"	5/16" x 3.20"	CWSE	12" Lyall Cord & Plug - Hex Hubs	Blanchard / Bohn
SS318	1/20	115	1.60	1550	2.84"	5/16" x 2.75"	CCWSE	"U" Bracket - Grooved Shaft	Blanchard
SS336	1/20	115	1.80	1550	2.50"	1/4" x 1.17"	CWSE	2 Bolts Opposite Shaft End	Woods
SS356	1/20	115	1.80	1550	2.59"	5/16" x 2.30"	CWSE	12" Leads	General Replacement
SS357	1/20	115	1.80	1550	2.59"	5/16" x 2.30"	CCWSE	12" Leads	General Replacement
SS368	1/20	115	1.80	1550	2.84"	5/16" x 2.75"	CCWSE	15" Lyall Cord & Plug	Ref-Plus
SS370 ●*	1/20	115	0.77	1550	4.09"	5/16" x 2.71"	CCWSE	Lyall Cord & Plug	Keeprite
SS300	1/25	115	1.80	1550	2.59"	5/16" x 2.50"	CWSE	12" Leads	Blanchard
SS030	1/25	115	1.70	1550	2.75"	5/16" x 2.57"	CWSE	12" Leads	General Replacement
SS303 ●	1/25	115	1.50	1550	3.77"	5/16" x 3.28"	CWSE	C/Box & Triangle Bracket	Caloritech / Trane
SS307	1/25	115	1.45	3000	3.30"	1/4" x 1.30"	CWSE	9" Lyall Cord & Plug	Keeprite / Nutone
SS332	1/25	115	1.50	1550	2.59"	5/16" x 1.50"	CCWSE	9" Leads	Blanchard / Bohn
SS360	1/35	115	1.00	1550	2.50"	1/4" x 1.60"	CCWSE	3 Bolts S.E.	Keeprite
SS205	1/30	115	1.20	1550	2.75"	1/4" x 1.75"	CCWSE	Triangle Bracket	Keeprite
SS304	1/40	115	0.89	1550	2.47"	1/4" x 1.50"	CCWSE	12" Leads	Nutone
SS305	1/50	115	1.00	2800	2.33"	1/4" x 1.50"	CCWSE	9" Cord & Plug, Grooved Shaft	Nutone
SS319	1/50	120	0.90	1430	2.09"	1/4" x 2.22"	CWSE	18" Cord & Plug	Dehumidifier
SS409	1/50	115	1.30	1550	2.12"	5/16" x 1.56"	CWSE	19" Leads	General Replacement
SS326	1/110	115	0.40	1550	1.90"	1/4" x 1.45"	CCWSE	"U" Bracket	Blanchard / Bohn
SS311	1/100	115	0.65	1550	2.09"	1/4" x 1.20"	CCWSE	6" Cord & Plug - Hex Hubs	Nutone
SS315	1/100	120	0.50	1550	2.09"	1/4" x 1.20"	CWSE	Cord & Plug - Hex Hubs Grooved Shaft	Nutone
SS350	----	115	1.20	1050	2.89"	5/16" x 1.50"	CCWSE	2 Speed	MarkHot

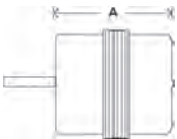
(●) Ball Bearing
(*) Permanent Split Capacitor Design

3.3" Diameter Open Construction

Kitchen / Bathroom Fans, Humidifiers / Dehumidifiers,
Unit Heaters, Unit Coolers & Display Cases

Features:

- Continuous Duty
- Class 'B' Insulation
- UL Listed & CSA Approved
- Shaded Pole & P.S.C
- Thermally Protected
- 60 Hz
- Sleeve Bearings



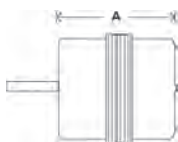
Stock #	HP	Volts	Amps.	RPM	"A"	Shaft	Rotation	Comments	Replaces
SS462 ~*	1/12	120	1.20	1625/3	4.14"	3.50" x 3/8" x 3.50"	CWLE	Capacitor Attached - Double Shaft	02101
56347 ~*	1/12	115	1.60	1050	4.14"	3/8" x 6.10"	CCWLE	Capacitor Attached - Double Shaft	56347-0
12027 ~*	1/12	120	1.20	1625/3	4.14"	3.50" x 3/8" x 3.50"	CWLE	Capacitor Attached - Double Shaft	12027
SS671 ●	1/15	115/208-230	2.10/1.10	1550	4.50"	5/16" x 2.20"	CCWSE	Resilient Rings Included - Fan cooled	1231, 1331, 1431, 1432
SS672	1/15	115/208-230	2.10/1.10	1550	4.50"	5/16" x 2.20"	CWSE	Resilient Rings Included - Fan cooled	1342, 1441, 1442
SS1332 ●	1/20	208 - 230	1.10	1550	4.60"	5/16" x 2.00"	CCWSE	Resilient Rings Included - Fan cooled	1332
SS359	1/20	208 - 230	1.10	1550	3.35"	5/16" x 3.20"	CWSE	12" Lyall Cord & Plug - Hex Hubs	Blanchard / Bohn
SS369	1/20	208 - 230	0.95	1550	2.82"	5/16" x 2.75"	CCWSE	10" Lyall Cord & Plug	Ref-Plus
SS371 ●*	1/20	230	0.36	1550	4.09"	5/16" x 2.71"	CCWSE	Lyall Cord & Plug	Keeprite
SS467 ~	1/20	120	1.40	1550	3.10"	1.70" x 5/16" x 1.70"	CWLE	Cord & Plug / Hex Hubs	Broan / Nutone
SS324 ~	1/25	115	2.10	1550	2.92"	1.95" x 5/16" x 1.95"	CWLE	Cord & Plug / Hex Hubs	Chromalox, Thermador
SS480	1/30	208 - 230	0.80	1500	4.05"	3/8" x 2.38"	CWSE	8 Mounting Lugs	Chromalox
SS413 ~	1/30	120	1.20	3000	3.00"	2.25" x 1/4" x 2.25"	CCWLE	31" Cord & Plug - Grooved Shafts	Lau
SS130	1/45	208 - 230	0.80	1550	2.71"	5/16" x 1.50"	CCWSE	"U" Bracket - 36" Leads	Blanchard
SS510 ~	1/50	120	1.10	1250	2.12"	1.10" x 1/4" x 1.50"	CWLE	3 Speed - Grooved Shaft	Camco / Woods
SS408 ~	1/80	115	0.60	1550	2.20"	1.60" x 1/4" x 1.60"	CCWLE	2 Speed - 27" Leads	Federal Pioneer / Lau
SS302	1/100	240	0.30	1400	2.00"	1/4" x 1.50"	CCWSE	12" Leads	Federal Pioneer

3.3" Diameter Totally Enclosed Construction

Kitchen / Bathroom Fans, Humidifiers, Unit Heaters, Fireplace Blowers

Features:

- Continuous Duty
- Class 'A' or 'B' Insulation
- UL Listed & CSA Approved
- Shaded Pole
- Thermally Protected
- 60 Hz
- Sleeve Bearings



Stock #	HP	Volts	Amps.	RPM	"A"	Shaft	Rotation	Comments	Replaces
SS266	1/20	120	1.45	1550	2.84"	5/16" x 1.40"	CCWSE	5" Cord & Plug	Reversomatic
SS220	1/20	115	1.80	1550	2.84"	5/16" x 1.22"	CWSE	10" Cord & Plug	Miami Carey / Leigh
SS219	1/20	115	1.80	1550	2.84"	5/16" x 2.25"	CCWSE	10" Cord & Plug	Nutone
SS213	1/25	115	1.40	1550	3.09"	5/16" x 1.78"	CWSE	Conduit Box - Triangle Bracket	Chromalox / Trane
SS214	1/40	115	0.80	2700	2.83"	1/4" x 1.45"	CCWSE	6" Cord & Plug	Nutone / Miami Carey
SS202	1/40	115	1.00	1550	2.50"	1/4" x 1.25"	CCWSE	2 Speed - Grooved Shaft	Nutone
SS208	1/40	115	1.20	1550	2.50"	1/4" x 1.95"	CCWSE	19" Leads	General Replacement
SS262	1/40	115	1.10	1550	2.34"	5/16" x 1.60"	CCWSE	6" Cord & Plug	Reversomatic
SS801	1/45	115	0.90	1550	2.25"	5/16" x 1.90"	CCWSE	8" Cord & Plug	Nutone
SS236	1/50	115	1.00	1575	2.10"	1/4" x 1.00"	CWSE	2 Speed - Grooved Shaft	Woods
SS209	1/50	115	0.85	1550	2.30"	1/4" x 1.60"	CCWSE	5" Cord & Plug	Nutone / Miami Carey
SS201	1/50	115	0.90	1430	2.12"	1/4" x 2.25"	CCWSE	18" Leads	Nutone / Air King
SS230	1/70	115	0.66	2800	2.33"	1/4" x 1.25"	CWSE	12" Leads	Coldstream / CGE
SS232	1/70	120	0.70	2800	2.56"	1/4" x 1.28"	CWSE	2 Speed	Nutone
SS203	1/70	115	0.90	1600	2.10"	1/4" x 1.50"	CWSE	8" Cord & Plug	Nutone / Miami Carey
SS264	1/75	120	0.70	1550	2.32"	5/16" x 2.00"	CCWSE	8" Cord & Plug	Reversomatic
SS207	1/80	115	0.80	1600	2.00"	1/4" x 1.56"	CCWSE	8" Cord & Plug	Nutone / Miami Carey
SS235	1/80	115	0.90	1050	2.35"	1/4" x 1.10"	CWSE	Grooved Shaft	Woods
SS260	1/90	115	0.60	1500	2.10"	5/16" x 1.13"	CWSE	7" Cord & Plug	Reversomatic
SS206	1/100	115	0.56	1550	2.10"	1/4" x 1.52"	CCWSE	2 Speed	Miami Carey / Air King
SS403	1/125	115	0.40	1550	2.78"	1/4" x 1.25"	CCWSE	On/Off Switch - 72" Cord & Plug	Newmac
SS506	1/140	115	0.50	1400	1.87"	1/4" x 2.00"	CCWSE	9" Cord & Plug - Grooved Shaft	Nutone / Woods
SS401	1/150	115	0.40	1600	2.10"	1/4" x 1.50"	CWSE	33" Leads	Enterprise

(•) Ball Bearing
(*) Permanent Split Capacitor Design

3.3" Diameter Totally Enclosed Construction

Kitchen / Bathroom Fans, Humidifiers, Unit Heaters, Fireplace Blowers

Features:

- Continuous Duty
- Class 'B' Insulation
- UL Listed & CSA Approved
- Shaded Pole
- Thermally Protected
- 60 Hz
- Sleeve Bearings



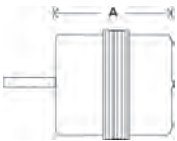
SS440



SS212S - SS212B - SS215



SS210 - SS217 - SS511



Stock #	HP	Volts	Amps.	RPM	"A"	Shaft	Rotation	Comments	Replaces
SS440 ~	1/20	120	1.60	1550	3.10"	3.80" x 5/16" x 3.80"	CWLE	Double Shafted w/ Cord & Plug - Hex Hubs	Nutone
SS212S	1/35	240	0.55	1550	2.80"	5/16" x 3.50"	CWSE	Triangle Bracket	Chromalox
SS212B •	1/35	240	0.55	1550	2.80"	5/16" x 3.50"	CWSE	Triangle Bracket	Chromalox
SS217	1/40	240	0.50	1550	2.30"	1/4" x 1.50"	CCWSE	24" Leads	Chromalox / FPE
SS210	1/50	230	0.40	1550	2.30"	1/4" x 1.50"	CWSE	24" Leads	Chromalox / FPE
SS511	1/100	230	0.38	1350	2.00"	1/4" x 2.00"	CCWSE	Groove on Shaft - 11" Leads	Blanchard / FPE
SS215	1/300	240	0.24	1200	2.20"	5/16" x 2.25"	CWSE	Triangle Bracket - 24" Leads	Chromalox

4.1" Diameter Open / Totally Enclosed Construction

Exhaust Fans, Coolers, Heaters, Condensers

Features:

- Continuous Duty
- Class 'A' or 'B' Insulation (Open)
- Class 'B' Insulation (Enclosed)
- UL Listed & CSA Approved
- Shaded Pole
- Thermally Protected
- 60 Hz.
- Sleeve Bearings

Open



SS958



SS174



SS2657 - SS2658



SS2604 - SS2603

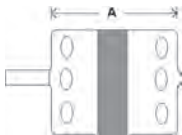
Totally Enclosed



SS008



SS2609 - SS2612



Stock #	HP	Volts	Amps.	RPM	"A"	Shaft	Rotation	Comments	Replaces
SS958	1/8	115	3.80	1550	3.94"	3/8" x 2.39"	CWSE	18" Leads - Hex Hubs	Franklin 80958
SS174	1/10	115	3.40	1450	3.25"	3/8" x 3.20"	CWSE	24" Leads - Hex Hubs	Fasco D174
SS2604	1/10	120	2.65	1550	3.42"	1/2" x 2.03"	CCWSE	12" Cord & Plug	Reversomatic DB300
SS2657	1/15	230	1.20	1550	3.42"	3/8" x 2.42"	CCWSE	10" Lyall Cord & Plug - Hex Hubs	Keeprite 8/335
SS2658	1/15	115	2.30	1550	3.42"	3/8" x 2.42"	CCWSE	10" Cord & Plug - Hex Hubs	Keeprite 8/356
SS2603	1/35	115	1.15	1550	3.17"	1/2" x 2.10"	CCWSE	12" Cord & Plug - Hex Hubs	Reversomatic DB200/260
SS008 ●	1/12	230	1.30	1550	3.94"	3/8" x 1.82"	CCWSE	13" Leads	Franklin, 75008
SS2609	1/30	115	1.21	1550	2.92"	1/2" x 2.35"	CCWSE	Conduit Box	Inter-City
SS2612	1/30	115	1.21	1550	2.92"	1/2" x 2.35"	CWSE	Conduit Box	Inter-City

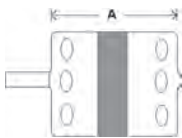
(●) Ball Bearing
(*) Permanent Split Capacitor Design

5" Diameter Open Construction

Unit Heaters, Furnace Blowers, Refrigeration

Features:

- Continuous Duty
- Mechanically Reversible
- Class "B" Insulation
- UL Listed & CSA Approved
- Shaded Pole
- Thermally Protected
- 60 Hz.
- Sleeve Bearings



Stock #	HP	Volts	Amps.	RPM	"A"	Shaft	Rotation	Comments	Replaces
SS2398	1/8	115	5.00	1050	3.88"	1/2" x 3.75"	CWSE	Cushion Rings - 3 Speed Hex Hubs, 4 Bolt Mounting Pattern 2-9/16" x 4-1/8"	General Replacement
SS8318	1/8	115	2.60	1550	3.50"	1/2" x 2-3/4"	CCWSE	4 Bolts - Mounted Capacitor	Greenheck 308318, McMillan A0820B3680, A0820B3859, Packard 90318
SS2930	1/10	115 / 230	4.10 / 2.00	1050	3.88"	3/8" x 2.80"	CWSE	Cushion Rings - Base 3/8" to 1/2" Bushing - 4 Studs on 3.50" B.C.D.	General Replacement Robbins & Myers GE 21/29 Frame
SS2932	1/10	115 / 208-230	5.00 / 2.50	1550	3.88"	3/8" x 2.88"	CCWSE	Cushion Rings - Base 3/8" to 1/2" Bushing - 4 Studs on 3.50" B.C.D.	General Replacement Robbins & Myers GE 21/29 Frame
SS2940	1/10	115 / 230	4.10 / 2.00	1050	3.88"	3/8" x 2.80"	CCWSE	Cushion Rings - Base 3/8" to 1/2" Bushing - 4 Studs on 3.50" B.C.D.	General Replacement Robbins & Myers GE 21/29 Frame
SS2942	1/10	115 / 208-230	5.00 / 2.50	1550	3.88"	3/8" x 2.88"	CWSE	Cushion Rings - Base 3/8" to 1/2" Bushing - 4 Studs on 3.50" B.C.D.	General Replacement Robbins & Myers GE 21/29 Frame
SS2497	1/10	115	3.40	1100	2.25"	1/2" x 1-5/8"	CWSE	Includes Mounting Hardware	A0510B2497, A0416B2059 A0510B2389
G018 •	1/10	600	0.64	1550	4.00"	1/2" x 7.23"	CWSE	Extended Thru-Bolts BX Connector	Federal Pioneer
SS2605	1/12	115	3.00	1050	3.00"	1/2" x 3.00"	CCWSE	8" Cord & Plug, 4 Bolt Mounting Pattern 2-9/16" x 4-1/8"	Reversomatic
F062 •	1/20	600	0.42	1550	4.00"	1/2" x 2.58"	CWSE	Tapped Holes on Shaft End	HACFM

5" Diameter Totally Enclosed Construction

Unit Heaters, Furnace Blowers, Refrigeration

Features:

- Continuous Duty
- Class "A" Insulation
- UL Listed & CSA Approved
- Thermally Protected
- Shaded Pole & P.S.C Designs
- Mechanically Reversible (Shaded Pole Only)
- Long Life Sleeve Bearings or Sealed Ball Bearings



SS2615 - SS2360



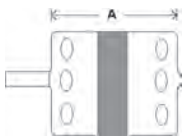
SS2380



J011



SS6920



Stock #	HP	Volts	Amps.	RPM	"A"	Shaft	Rotation	Comments	Replaces
SS2615	1/8	115	4.60	1050	3.87"	1/2" x 3.25"	CWSE	Cushion Rings 3 Mounting Studs S.E.	Reznor / Luxaire
SS2380 *	1/8	115	2.30	1075	4.00"	1/2" x 3.00"	CWSE	Resilient Base	Robbins & Myers / Reznor
J011 •	1/10	600	0.83	1550	4.00"	1/2" x 7.23"	CWSE	4 Studs on Shaft End	Chromalox
SS2360	1/15	115	2.30	1050	3.26"	1/2" x 2.80"	CWSE	Cushion Rings 3 Mounting Studs S.E.	Reznor / Luxaire
SS6920	1/15	115	2.70	1050	3.87"	3/8" x 3.55"	CWSE	Cushion Rings 4 Studs on 3.50" B.C.D.	Robbins & Myers / Lennox ICP / Keeprite

(•) Ball Bearing
(*) Permanent Split Capacitor Design

Airdex



UB160



UB265



UB465

Stock #	Diameter	HP	Volts	Amps.	RPM	"C"	Shaft	CFM	Replaces
UB160	Blower	1/33	115	1.10	1550	6-3/4"	----	160	50755-D500, 7017340
UB265	Blower	1/25	115	1.40	1500	7.00"	----	265	B45227, 7017300
UB465	Blower	1/15	115	2.60	1550/2	10-1/2"	----	465	B45267, 7017320

Air King



SS3670



SS603



SS201 - SS206

Stock #	Diameter	HP	Volts	Amps.	RPM	"A"	Shaft	Rotation	Replaces
SS3670	Skeleton	----	120 / 240	0.40 / 0.26	3000	5/8" Stack	3/16" x 1-9/16"	CWSE	Vent Fan
SS603	Skeleton	----	120	0.63	2400	5/8" Stack	7/32" x 2-1/8"	CCWSE	2108370033, 56, 57
SS201	3.3"	1/50	115	0.90	1430	2.12"	1/4" x 2.25"	CCWSE	Vent Fan
SS206	3.3"	1/100	115	0.56	1550	2.10"	1/4" x 1.52"	CCWSE	2108375036, 44

Aston / Air2000



SS356



A2000

Stock #	Diameter	HP	Volts	Amps.	RPM	"A"	Shaft	Rotation	Replaces
SS356	3.3"	1/20	115	1.80	1550	2.59"	5/16" x 2.30"	CWSE	Heat Recovery Ventilator
A2000 ●	3.3"	1/25	120	1.20	1550	2.85"	5/16" x 1.40"	CWSE	Heat Recovery Ventilator

Blanchard-Ness



Stock #	Diameter	HP	Volts	Amps.	RPM	"A"	Shaft	Rotation	Replaces
SS605	Skeleton	---	120	1.00	2800	5/8" Stack	3/16" x 1-3/4"	CCWSE	79103, 79104, E1014
SS358	3.3"	1/15	115	2.20	1550	3.32"	5/16" x 3.20"	CWSE	50011, E1008, E1052, E1055, E1058
SS318	3.3"	1/20	115	1.60	1550	2.85"	5/16" x 2.80"	CCWSE	79105, 5010S, E1007, E1057
SS359	3.3"	1/20	208 - 230	1.10	1550	3.35"	5/16" x 3.20"	CWSE	5008T, 503414, E1009, E1053, E1056, E1059
SS300	3.3"	1/25	115	1.80	1550	2.59"	5/16" x 2.50"	CWSE	E1068
SS332	3.3"	1/25	115	1.50	1550	2.59"	5/16" x 1.50"	CCWSE	79107, 5001F
SS130	3.3"	1/45	230	0.80	1550	2.71"	5/16" x 1.50"	CCWSE	79106, 79108, 79113, 5001M
SS326	3.3"	1/110	115	0.40	1550	1.90"	1/4" x 1.45"	CCWSE	79101, E1001, E1002, E1003
SS302	3.3"	1/100	240	0.30	1400	2.00"	1/4" x 1.50"	CCWSE	E1004
SS511	3.3"	1/100	240	0.28	1350	2.10"	1/4" x 2.00"	CCWSE	79115
SS739B ●	5.5"	1/4	208 - 230	1.70	825	4.25"	1/2" x 6-1/2"	REV.	E1026
RMT0062 ●*	56Y	1-1/2	575	2.50	860	10.50"	5/8" x 2.50"	REV.	E5039

Bohn / Larkin (Heatcraft)



Stock #	Diameter	HP	Volts	Amps.	RPM	"A"	Shaft	Rotation	Replaces
SS605	Skeleton	---	120	1.00	2800	5/8" Stack	3/16" x 1-3/4"	CCWSE	Vent Fan
SS9721 ●*	3.3"	1/12	115 / 208 - 230	1.10 / 0.60	1550	3.62"	5/16" x 3.15"	REV.	253-9101
SS358	3.3"	1/15	115	2.20	1550	3.32"	5/16" x 3.20"	CWSE	5001L, 8S, 4L
SS359	3.3"	1/20	208 - 230	1.10	1550	3.35"	5/16" x 3.20"	CWSE	5009T, 5034M
SS574	3.3"	1/20	115	1.90	1550	2.75"	5/16" x 2.50"	CCWSE	253-1194
SS575	3.3"	1/20	230	0.89	1550	2.75"	5/16" x 2.50"	CCWSE	253-1195
SS332	3.3"	1/25	115	1.50	1550	2.59"	5/16" x 1.50"	CCWSE	79107, 112, 5001F, 11S, 20F, 35F
SS326	3.3"	1/85	115	0.50	1550	1.90"	1/4" x 1.45"	CCWSE	79101
SS3729 ●*	5.5"	1/3	208 - 230	2.70	1075	4.61"	1/2" x 6.00"	REV.	7.5 / 370 (Capacitor)
SS3730 ●*	5.5"	1/2	208 - 230	3.50	1075	5.11"	1/2" x 6.00"	REV.	10 / 370 (Capacitor)

(●) Ball Bearing
 (*) Permanent Split Capacitor Design

Broan

(also see Nutone)



30080058



99080481 - 99080482



99080483 - 99080484 - 99080485



99080486 - 99080487 - 99080488



SS324



16230



30080135



SS9316 - SS9317

Stock #	Diameter	HP	Volts	Amps.	RPM	"A"	Shaft	Rotation	Replaces
30080058	3.3"	1/100	115	0.61	1050	2-1/2"	5/16" x 1-7/8"	CCWSE	30080058, JA2C290, JA2C291
99080481 *	3.3"	1/200	120	0.43	648	2.73"	3/8" x 3.25"	CCWSE	JA2R322
99080482 *	3.3"	1/70	120	0.56	745	2.87"	3/8" x 3.00"	CCWSE	JA2R321
99080483	3.3"	1/25	120	1.60	1550	4.37"	3/8" x 1.45"	CCWSE	JA2Y043
99080484	3.3"	1/20	120	2.00	1550	4.37"	3/8" x 1.45"	CCWSE	JA2Y045
99080485	3.3"	1/20	120	2.60	1550	4.37"	3/8" x 1.45"	CCWSE	JA2Y044
99080486 ~	3.3"	1/20	120	0.90	1625	4.44"	3.98" x 3/8" x 3.98"	CWLE	JE2G095
99080487 ~*	3.3"	1/12	120	2.00	1625	4.09"	4.14" x 3/8" x 4.14"	CWLE	JE2J051, JE2J066
99080488 ~*	3.3"	1/7	120	2.70	1625	4.09"	4.14" x 3/8" x 4.14"	CWLE	JE2J052
SS324 ~	3.3"	1/25	115	2.10	1550	2.92"	1.95" x 5/16" x 1.95"	CWLE	99080151, 99080152, 30080059, 30080060
16230 •	4.1"	1/8	115	3.40	1550	4.65"	3/8" x 2.40"	CWSE	CB2J088
30080135 *	4.4"	1/10	120	1.80	1050	3-1/2"	1/2" x 2-3/8"	CWSE	30080135
SS9316	5.0"	---	115	3.40	1100	2-1/4"	1/2" x 3.00"	CWSE	97009316
SS9317	5.0"	---	115	4.30	1100	2-5/8"	1/2" x 2-5/8"	CWSE	97009317, 99080267

Caloritech



SS303

Stock #	Diameter	HP	Volts	Amps.	RPM	"A"	Shaft	Rotation	Replaces
SS303 •	3.3"	1/25	115	1.50	1550	3.70"	5/16" x 3.30"	CWSE	Electric Heaters

Camco



SS510

Stock #	Diameter	HP	Volts	Amps.	RPM	"A"	Shaft	Rotation	Replaces
SS510 ~	3.3"	1/50	115	1.16	1250/3	2.12"	1.10" x 1/4" x 1.50"	CWLE	Humidifier

Canarm / Pleasantaire



P1000-B4

Stock #	Diameter	HP	Volts	Amps.	RPM	"A"	Shaft	Rotation	Replaces
P1000-B4 ●	3.3"	1/20	115	1.70	1600/2	2.87"	5/16" x 1.75"	CWSE	S8-B2, S10-B2

Cancoil Thermal



MA1074

Stock #	Frame	HP	Volts	Amps.	RPM	"A"	Shaft	Rotation	Comments
MA1074 ●	56Y	2	575	3.10	1140	10"	5/8" x 3.00"	REV.	Rigid Base - TEAO

Carrier



UFM653



UFM3714



5BD1106



HD60FE575

Stock #	Diameter	HP	Volts	Amps.	RPM	"A"	Shaft	Rotation	Replaces
UFM653 ●	3.3"	1/12	230 / 460	1.20 / 0.60	3000	6-3/4"	1/4" x 2.25"	CCWSE	4653
UFM3714 ●*	3.3"	1/8	115 / 230	1.60 / 0.80	3200	7-1/8"	1/4" x 4.00"	REV.	HC30GB231A
HD60FE575 ●	6.5"	5	575 - 3Ø	5.60	1725	13.00"	7/8" x 3-1/4"	REV.	HD60FE575
5BD1106 ●*	5.5"	1	575 - 1Ø	2.40	1075/2	6.50"	1/2" x 5.00"	REV.	F1575DD, 50HJ900575, 88C7601, X70671181-017, X70671479-001, 50HJ900575

CGE



SS230

Stock #	Diameter	HP	Volts	Amps.	RPM	"A"	Shaft	Rotation	Comments
SS230	3.3"	1/70	115	0.66	2800	2.33"	1/4" x 1.25"	CWSE	12" Leads

(●) Ball Bearing
 (*) Permanent Split Capacitor Design

Chromalox (Dimplex)



Stock #	Diameter	HP	Volts	Amps.	RPM	"A"	Shaft	Rotation	Replaces
SS3670	Skeleton	---	120 / 240	0.40 / 0.26	3000	5/8" Stack	3/16" x 1.50"	CWSE	Heater
SS611	Skeleton	---	120	0.60	1500	1/2" Stack	3/16" x 1.65"	CCWSE	Heater
SS617	Skeleton	---	208 - 240	0.22	1900	3/8" Stack	3/16" x 1.30"	CWSE	04290-004
SS635	Skeleton	---	208 - 240	1.20	1550	1-1/2" Stack	1/4" x 1.50"	CCWSE	Heater
SS210	3.3"	1/50	230	0.40	1550	2.30"	1/4" x 1.56"	CWSE	2868-407-128, 2868-405-168, 2868-405-131
SS213	3.3"	1/25	115	1.40	1550	3.10"	5/16" x 1.78"	CWSE	2868-507-125, 2868-511-020
SS215	3.3"	1/300	240	0.24	1200	2.22"	5/16" x 2.25"	CWSE	2868-505-016, 085
SS217	3.3"	1/40	240	0.50	1550	2.34"	1/4" x 1.56"	CCWSE	2868-407-130
SS212B •	3.3"	1/35	240	0.55	1550	2.84"	5/16" x 3.50"	CWSE	2868-405, 23405, 23388
SS212S	3.3"	1/30	240	0.55	1550	2.80"	5/16" x 3.54"	CWSE	2868-405, 23405, 23388
SS480	3.3"	1/30	208 - 240	0.80	1500	4.05"	3/8" x 2.38"	CWSE	2868-511-105
G018 •	5.0"	1/10	600	0.64	1550	4.00"	1/2" x 7.23"	CWSE	01520-003, 01520-007
J011 •	5.0"	1/10	600	0.83	1550	4.00"	1/2" x 7.23"	CWSE	01520-115
E004 •	5.5"	1/6	575 - 3Ø	0.30	1140	4.37"	1/2" x 4.60"	REV.	03167-007
F006 •	5.5"	1/6	575 - 3Ø	0.30	1725	4.80"	1/2" x 4.60"	REV.	01520-020

Coldstream



Stock #	Diameter	HP	Volts	Amps.	RPM	"A"	Shaft	Rotation	Replaces
SS122	3.3"	1/60	230	0.35	1550	2.50"	Hubless	CCWSE	Refrigeration Cases
SS137	3.3"	1/70	115	0.59	1550	2.25"	Hubless	CCWSE	Refrigeration Cases
SS230	3.3"	1/70	115	0.66	2800	2.33"	1/4" x 1.25"	CWSE	Refrigeration Cases

Drolet



UB33

Stock #	Diameter	HP	Volts	Amps.	RPM	"C"	Shaft	CFM	Replaces
UB33	Blower	1/50	115	0.88	3200	6-3/4"	----	100	RB33, Wood & Pellet Stove

Dundas Foundry



UFB500

Stock #	Diameter	HP	Volts	Amps.	RPM	"C"	Shaft	CFM	Replaces
UFB500	Blower	1/33	115	1.10	2860	6.00"	----	140	4C442, RFB500

Dunham Bush



SS124 - SS125



SS9428

Stock #	Diameter	HP	Volts	Amps.	RPM	"A"	Shaft	Rotation	Replaces
SS124 •	3.3"	1/20	115	1.55	1550	2.80"	Hubless	CWSE	350044, 350046, MM2847
SS125 •	3.3"	1/20	230	0.80	1550	2.80"	Hubless	CWSE	350043, 350045, MM2848
SS9428	5.5"	1	575-3Ø	1.70	1100	7.50"	1/2" x 2.75"	REV.	142935, HM3T007, 010

Elmira



UB200T-2

Stock #	Diameter	HP	Volts	Amps.	RPM	"A"	Shaft	CFM	Replaces
UB200T-2	Blower	1/100	120	0.60	1600	14.96"	5/16" x 3.25"	200	2812-681-002, RB200T-2

(•) Ball Bearing
 (*) Permanent Split Capacitor Design

Electrohome



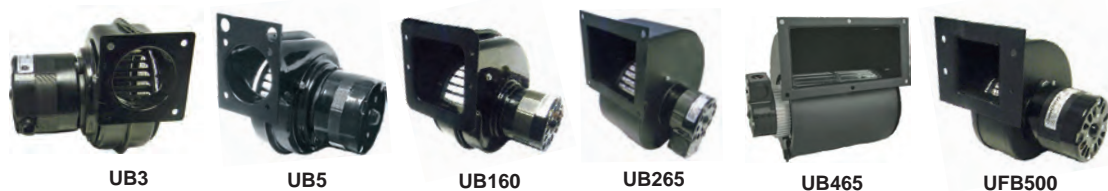
Stock #	Diameter	HP	Volts	Amps.	RPM	"C"/"A"	Shaft	CFM/Rotation	Replaces
UB1	Blower	1/30	115	1.20	2700	8-1/2"	----	200	EB1
UB3	Blower	1/50	120	0.80	3000	5-1/2"	----	100	EB3
UB4 •	Blower	1/40	120	0.88	3000	5.58"	----	100	EB4
UB5	Blower	1/125	115	0.40	1550	4.94"	----	50	EB5
SS324 ~	3.3"	1/25	115	2.10	1550	2.92"	1.95" x 5/16" x 1.95"	CWLE	2568-511-098

Enterprise Foundry



Stock #	Diameter	HP	Volts	Amps.	RPM	"A"	Shaft	Rotation	Replaces
SS401	3.3"	1/150	115	0.40	1600	2.10"	1/4" x 1.60"	CWSE	Heaters
SS403	3.3"	1/125	115	0.40	1550	2.77"	1/4" x 1.25"	CCWSE	Heaters

Fasco (Blowers)



Stock #	Diameter	HP	Volts	Amps.	RPM	"C"	Shaft	CFM	Replaces
UB3	Blower	1/50	120	0.80	3000	5-1/2"	----	100	B24220
UB5	Blower	1/125	115	0.40	1550	4.94"	----	50	B30
UB160	Blower	1/33	120	1.10	1550	6.50"	----	160	50755-D500
UB265	Blower	1/25	115	1.40	1550	7.00"	----	265	B45227
UB465	Blower	1/15	115	2.60	1550	10-1/2"	----	465	B45267
UFB500	Blower	1/33	115	1.10	2860	6.00"	----	140	850752-D500

Fasco



Stock #	Diameter	HP	Volts	Amps.	RPM	"A"	Shaft	Rotation	Replaces
SS3103	Skeleton	----	120	0.81	3000	3/4" Stack	7/32" x 2-7/16"	CCWSE	K109
SS212B ●	3.3"	1/35	230	0.55	1550	2.80"	5/16" x 3.50"	CWSE	D1118
SS213	3.3"	1/25	115	1.40	1550	3.10"	5/16" x 1.78"	CWSE	D184
SS356	3.3"	1/20	115	1.80	1550	2.59"	5/16" x 2.30"	CWSE	D132
SS357	3.3"	1/20	115	1.80	1550	2.59"	5/16" x 2.30"	CCWSE	D133
SS359	3.3"	1/20	208 - 230	1.10	1550	3.35"	5/16" x 3.20"	CWSE	D1126
SS368	3.3"	1/20	115	1.80	1550	2.88"	5/16" x 2.80"	CCWSE	D1101
SS369	3.3"	1/20	208 - 230	0.95	1550	2.82"	5/16" x 2.75"	CCWSE	D1103
SS370 ●*	3.3"	1/20	115	0.77	1550	4.10"	5/16" x 2.71"	CCWSE	D1243
SS371 ●*	3.3"	1/20	230	0.37	1550	4.10"	5/16" x 2.71"	CWSE	D1245
SS409	3.3"	1/50	115	1.30	1550	2.12"	5/16" x 1.56"	CWSE	D126
SS440 ~	3.3"	1/20	120	1.60	1550	3.16"	3.80" x 5/16" x 3.80"	CWLE	D1163
SS510 ~	3.3"	1/50	120	1.10	1250	2.12"	1.19" x 1/4" x 1.53"	CWLE	D1134
UFM410 ●*	3.3"	1/10	115 / 230	1.40 / 0.70	3000	7.12"	1/4" x 3.75"	REV.	D410
SS174	4.1"	1/10	115	3.40	1450	3.25"	3/8" x 3.20"	CWSE	D174
SS2658	4.1"	1/15	115	2.30	1550	3.42"	3/8" x 2.44"	CCWSE	D1246

Federal Pioneer



SS217 - SS210 - SS511 SS408 S302

Stock #	Diameter	HP	Volts	Amps.	RPM	"A"	Shaft	Rotation	Comments
SS217	3.3"	1/40	240	0.50	1550	2.30"	1/4" x 1.60"	CCWSE	L82116A4
SS210	3.3"	1/50	230	0.40	1550	2.30"	1/4" x 1.50"	CWSE	Electric Heater
SS408 ~	3.3"	1/80	115	0.60	1550	2.20"	1.60" x 1/4" x 1.60"	CCWLE	Electric Heater
SS511	3.3"	1/100	240	0.28	1350	2.10"	1/4" x 2.00"	CCWSE	Electric Heater
SS302	3.3"	1/100	240	0.30	1400	2.00"	1/4" x 1.50"	CCWSE	L81512W1

(●) Ball Bearing
 (*) Permanent Split Capacitor Design
 (-) Double Shafted

OEM Replacement Motors

Foster



Stock #	Diameter	HP	Volts	Amps.	RPM	"A"	Shaft	Rotation	Replaces
SS605	Skeleton	---	120	1.00	2800	5/8" Stack	3/16" x 1-3/4"	CCWSE	366864
SS120	3.3"	1/70	115	0.63	1550	2.25"	Hubless	CCWSE	Refrigeration Cases
SS119	3.3"	1/70	115	0.70	1550	2.22"	Hubless	CWSE	Refrigeration Cases
SS127	3.3"	1/80	115	0.75	1600	2.00"	Hubless	CWSE	Refrigeration Cases
SS101	3.3"	1/45	115	0.90	1550	2.34"	Hubless	CCWSE	Refrigeration Cases
SS101L	3.3"	1/45	115	0.90	1550	2.34"	Hubless	CCWSE	Refrigeration Cases
SS103	3.3"	1/45	115	0.90	1550	2.36"	Hubless	CWSE	Refrigeration Cases
SS103L	3.3"	1/45	115	0.90	1550	2.34"	Hubless	CWSE	Refrigeration Cases
SS124 •	3.3"	1/20	115	1.55	1550	2.80"	Hubless	CWSE	Refrigeration Cases
SS122	3.3"	1/60	230	0.35	1550	2.50"	Hubless	CCWSE	Refrigeration Cases
SS125 •	3.3"	1/20	230	0.80	1550	2.80"	Hubless	CWSE	Refrigeration Cases

Franklin



Stock #	Diameter	HP	Volts	Amps.	RPM	"C"/"A"	Shaft	CFM/Rotation	Replaces
UB1	Blower	1/30	115	1.20	2700	8.30"	----	140	76001
UB4	Blower	1/40	120	0.88	3000	5-1/2"	----	100	76004, 80042
UB5	Blower	1/125	115	0.40	1550	4.94"	----	50	B30, 76005, 80239
UB160	Blower	1/33	120	1.10	1550	6.59"	----	160	50755-D500, 80611
UB265	Blower	1/25	115	1.40	1550	7.00"	----	265	B45227, 80224, 8214117524
UB465	Blower	1/15	115	2.60	1550	10-1/2"	----	465	B45267
SS008 •	4.1"	1/12	230	1.30	1550	3.94"	3/8" x 1.82"	CCWSE	75008

General Purpose

(Blowers)



Stock #	Diameter	HP	Volts	Amps.	RPM	"C"	Shaft	CFM	Replaces
UB1	Blower	1/30	115	1.10	2860	6.00"	----	140	RB1, B24220
UB3	Blower	1/50	120	0.80	3000	5.42"	----	100	RB3, B30
UB160	Blower	1/33	115	1.10	1550	5.00"	----	160	RB160, 50755-D500
UB265	Blower	1/25	115	1.40	1500	7.00"	----	265	RB265, B45227
UB465	Blower	1/15	115	2.60	1550	10-1/2"	----	465	RB465, B45267

General Purpose



Stock #	Diameter	HP	Volts	Amps.	RPM	"A"	Shaft	Rotation	Replaces
SS208	3.3"	1/40	115	1.20	1550	2.50"	5/16" x 1.95"	CCWSE	R208
SS409	3.3"	1/50	115	1.30	1550	2.12"	5/16" x 1.56"	CWSE	R409, D126
SS356	3.3"	1/20	115	1.80	1550	2.59"	5/16" x 2.30"	CWSE	R356, D132
SS357	3.3"	1/20	115	1.80	1550	2.59"	5/16" x 2.30"	CCWSE	R357, D133
UFM78 ●*	3.3"	1/10	115 / 230	1.30 / 0.70	3200	4-1/8"	5/16" x 3.25"	REV.	RFM78
UFM653 ●	3.3"	1/12	230 / 460	1.20 / 0.60	3000	6-3/4"	1/4" x 2.25"	CCWSE	RFM653
UFM3714 ●*	3.3"	1/8	115 / 230	1.60 / 0.80	3200	7-1/8"	1/4" x 4.00"	REV.	RFM3714
SS958	4.1"	1/8	115	3.80	1550	3.94"	3/8" x 2.44"	CWSE	R2390
SS2398	5.0"	1/8	115	5.00	1050	3.87"	1/2" x 3.75"	CWSE	R2398
SS2930	5.0"	1/10	115 / 230	4.10 / 2.00	1050	3.87"	3/8" x 2.80"	CWSE	R2930
SS2932	5.0"	1/10	115 / 208-230	5.00 / 2.50	1550	3.87"	3/8" x 2.80"	CCWSE	R2932
SS2940	5.0"	1/10	115 / 230	4.10 / 2.00	1050	3.87"	3/8" x 2.80"	CCWSE	R2940
SS2942	5.0"	1/10	115 / 208-230	5.00 / 2.50	1550	3.87"	3/8" x 2.80"	CWSE	R2942

Grainger (Dayton)



Stock #	Diameter	HP	Volts	Amps.	RPM	"C"/"A"	Shaft	CFM/Rotation	Replaces
UB160	Blower	1/33	115	1.10	1550	6-3/4"	----	160	4C458, 50755-D500
UB265	Blower	1/25	115	1.40	1500	7.00"	----	265	4C447, B45227
UB465	Blower	1/15	115	2.60	1550/2	10-1/2"	----	465	4C448, B45267
SS262	3.3"	1/40	115	1.10	1550	2.34"	5/16" x 1.50"	CCWSE	3M723
SS356	3.3"	1/20	115	1.80	1550	2.32"	5/16" x 2.30"	CWSE	3M547

(●) Ball Bearing
 (*) Permanent Split Capacitor Design

Greenheck



SS8318

Stock #	Diameter	HP	Volts	Amps.	RPM	"A"	Shaft	Rotation	Replaces
SS8318	5.0"	1/8	115	2.60	1550	3.50"	1/2" x 2-3/4"	CCWSE	308318

Greenhouse Blowers



UB160



UB265



UB465



UFB500

Stock #	Diameter	HP	Volts	Amps.	RPM	"C"	Shaft	CFM	Replaces
UB160	Blower	1/33	120	1.10	1550	6.59"	----	160	50755-D500
UB265	Blower	1/25	115	1.40	1550	7.00"	----	265	B45227
UB465	Blower	1/15	115	2.60	1550	10-1/2"	----	465	B45267
UFB500	Blower	1/33	115	1.10	2860	6.00"	----	140	4C442, RFB500

Heat & Glow



UB168

Stock #	Diameter	HP	Volts	Amps.	RPM	"A"	Shaft	CFM	Replaces
UB168	Blower	----	115	1.00	3000	12-3/8"	----	168	GFK-160A, 7002-1241

Heritage



UB33

Stock #	Diameter	HP	Volts	Amps.	RPM	"C"	Shaft	CFM	Replaces
UB33	Blower	1/50	115	0.88	3200	6-3/4"	----	100	Wood Stove

Hunter



SS108

Stock #	Diameter	HP	Volts	Amps.	RPM	"A"	Shaft	Rotation	Replaces
SS108	3.3"	1/100	115	0.60	1550	2.00"	Hubless	CWSE	2-SR

Hussmann



SS34201

J055

F062

Stock #	Diameter	HP	Volts	Amps.	RPM	"A"	Shaft	Rotation	Replaces
SS34201 ●*	5.0"	1/5	575 - 1Ø	0.50	1075	4.50"	1/2" x 3.30"	CCWSE	1042140, 204201, R34201, R30575
J055 ●*	5.5"	1/6	575 - 1Ø	0.80	1650	4.32"	1/2" x 3.20"	REV.	77238, 1042140, R30575
F062 ●	5.5"	1/20	600 - 1Ø	0.42	1550	4.00"	1/2" x 2.58"	CWSE	206578, DA2F062, DA2F091

Ideal



SS611

SS108 - SS123

Stock #	Diameter	HP	Volts	Amps.	RPM	"A"	Shaft	Rotation	Replaces
SS611	Skeleton	---	120	0.60	1500	1/2" Stack	3/16" x 1.65"	CCWSE	Heater
SS108	3.3"	1/100	115	0.60	1550	2.00"	Hubless	CWSE	Evaporator Motor
SS123	3.3"	1/70	115	0.60	1550	2.59"	Hubless	CCWSE	Evaporator Motor

Intercity



SS2609 - SS2612

Stock #	Diameter	HP	Volts	Amps.	RPM	"A"	Shaft	Rotation	Replaces
SS2609	4.1"	1/30	115	1.21	1550	2.94"	1/2" x 2.38"	CCWSE	UE009
SS2612	4.1"	1/30	115	1.21	1550	2.94"	1/2" x 2.38"	CWSE	UE010

(●) Ball Bearing
 (*) Permanent Split Capacitor Design

Keeprite



Stock #	Diameter	HP	Volts	Amps.	RPM	"A"	Shaft	Rotation	Replaces
SS205	3.3"	1/30	115	1.20	1550	2.75"	1/4" x 1.70"	CCWSE	11796-8, R205
SS307	3.3"	1/25	115	1.45	3000	3.30"	1/4" x 1.30"	CWSE	85680
SS360	3.3"	1/35	115	1.20	1550	2.50"	1/4" x 1.60"	CCWSE	50424, 1043291
SS370 ●*	3.3"	1/20	115	0.77	1550	4.10"	5/16" x 2.71"	CCWSE	501898, 501899, 505124
SS371 ●*	3.3"	1/20	230	0.36	1550	4.10"	5/16" x 2.71"	CCWSE	501908, 501909, 505125
SS2658	4.1"	1/15	115	2.30	1550	3.42"	3/8" x 2.42"	CCWSE	81356
SS2657	4.1"	1/15	230	1.20	1550	3.42"	3/8" x 2.42"	CCWSE	81335
SS2269	5.0"	1/15	115	2.70	1050	2.97"	1/2" x 3.00"	CWSE	160269
E015	5.5"	1/20	230	0.89	1050/3	3.44"	1/2" x 2.38"	CCWSE	130784
J055 ●*	5.5"	1/6	575 - 1Ø	0.80	1650	4.32"	1/2" x 3.20"	REV.	1042140
G004 ●	5.5"	1/4	575 - 3Ø	0.46	1100	6.00"	5/8" x 3.00"	REV.	171065
5BD1076 ●	5.5"	3/4	575 - 1Ø	2.30	1075/2	6.30"	4-1/2" x 5.00"	REV.	HQ1095096

Krack (Hussmann)



SS313

Stock #	Diameter	HP	Volts	Amps.	RPM	"A"	Shaft	Rotation	Replaces
SS313 ●	3.3"	1/15	115	2.20	1550	3.58"	5/16" x 3.00"	CWSE	E206444

Larkin (See Bohn)

Lau



Stock #	Diameter	HP	Volts	Amps.	RPM	"A"	Shaft	Rotation	Replaces
SS408 ~	3.3"	1/80	115	0.60	1550	2.20"	1.60" x 1/4" x 1.60"	CCWLE	421306-01
SS413 ~	3.3"	1/30	120	1.20	3000	3.00"	2.25" x 1/4" x 2.25"	CCWLE	421532-02

Lear (Sieglar)



Stock #	Diameter	HP	Volts	Amps.	RPM	"A"	Shaft	Rotation	Replaces
SS108	3.3"	1/100	115	0.60	1550	2.00"	Hubless	CWSE	Furnace

Leigh



Stock #	Diameter	HP	Volts	Amps.	RPM	"A"	Shaft	Rotation	Replaces
SS220	3.3"	1/20	115	1.80	1550	2.84"	5/16" x 1.22"	CWSE	16603, 97721

Luxaire (See York)

Lomanco



SS2497

Stock #	Diameter	HP	Volts	Amps.	RPM	"A"	Shaft	Rotation	Replaces
SS2497	5.0"	1/10	115	3.40	1100	2.25"	1/2" x 1-5/8"	CWSE	A0510B2497, A0416B2059 A0510B2389

Loren Cook



SS2224 - SS3234 - SS4200



SS5200



SS6264 - SS7274



C06E2A



C07E4A



C09E4A

Stock #	Diameter	HP	Volts	Amps.	RPM	"A"	Shaft	Rotation	Replaces
SS2224	4.4"	1/114	115	0.75	1500	2-3/8"	3/8" x 2-3/4"	CWSE	220/240, 615053
SS3234	4.4"	1/16	115	2.20	1550	2-5/8"	3/8" x 2-1/2"	CWSE	320/340, 615054
SS4200	4.4"	1/23	115	1.50	1500	2-5/8"	3/8" x 2-3/4"	CWSE	420, 615055
SS6264	4.4"	1/11	115	4.60	1500	3.00"	1/2" x 6-1/4"	CWSE	620/640, 615057
SS5200 *	5.0"	1/16	115	1.50	1200	3.00"	3/8" x 2-1/4"	CWSE	520, 615056
SS7274 *	5.0"	1/4	115	3.90	1625	3 3/8"	1/2" x 6-1/4"	CWSE	720/740, 615058
C06E2A *	5.5"	1/8	115	1.40	1600	3.53"	1/2" x 3.00"	CWSE	C03E2A, CK48HC21P87, 100133
C07E4A *	5.5"	1/6	115	1.80	1100	3.83"	1/2" x 3.43"	CWSE	100170, K55HXDRT-498 CK48HCZ1M75
C09E4A *	5.5"	1/3	115	4.80	1080	5.00"	1/2" x 3.00"	CWSE	100172, CK48HC21589

Markhot



SS133



SS350



J020P



G156

Stock #	Diameter	HP	Volts	Amps.	RPM	"A"	Shaft	Rotation	Replaces
SS133	3.3"	1/30	115	1.10	1550	2.63"	Hubless	CWSE	5DH1A1-P456
SS350	3.3"	---	115	1.20	1050	2.89"	5/16 x 1.50"	CCWSE	5AA1A3-P4S
G156	4.1"	1/20	115	2.10	1550	3.27"	5/16" x 3.20"	CWSE	8424015054
J020P*	5.6"	1/10	115	1.60	1550	3.50"	1/2" x 3.93"	CWSE	Unit Heater

Miami-Carey



SS610



SS203 - SS206 - SS207



SS209 - SS214 - SS220

Stock #	Diameter	HP	Volts	Amps.	RPM	"A"	Shaft	Rotation	Replaces
SS610	Skeleton	---	120	1.20	2400/2	7/8" Stack	7/32" x 1-3/16"	CCWSE	1V4217
SS203	3.3"	1/70	115	0.90	1600	2.10"	1/4" x 1.50"	CWSE	1V2430
SS206	3.3"	1/100	115	0.56	1550	2.10"	1/4" x 1.52"	CCWSE	Vent Fan
SS207	3.3"	1/80	115	0.80	1600	2.00"	1/4" x 1.50"	CCWSE	Vent Fan
SS209	3.3"	1/50	115	0.85	1550	2.30"	1/4" x 1.60"	CCWSE	1V3117, 39328
SS214	3.3"	1/40	115	0.80	2700	2.87"	1/4" x 1.45"	CCWSE	Vent Fan
SS220	3.3"	1/20	115	1.80	1550	2.87"	5/16" x 1.30"	CWSE	1V2429

Newmac



UB33



SS403

Stock #	Diameter	HP	Volts	Amps.	RPM	"C"/"A"	Shaft	CFM/Rotation	Replaces
UB33	Blower	1/50	115	0.88	3200	6-3/4"	----	100	2040001
SS403	3.3"	1/125	115	0.40	1550	2.78"	1/4" x 1.25"	CCWSE	7017011

Nordica



UB3



UB33

Stock #	Diameter	HP	Volts	Amps.	RPM	"C"	Shaft	CFM	Replaces
UB3	Blower	1/50	120	0.80	3000	5-1/2"	----	100	B24220
UB33	Blower	1/50	115	0.88	3200	6-3/4"	----	100	Diamond & Furnace Variable Speed

OEM Replacement Motors

Nutone (also see Broan)



SS601 - SS603 - SS613



SS604 - SS611 - SS3103



SS605 - SS610



SS3100



SS3101



SS3670



SS201 - SS202 - SS203
SS207 - SS506 - SS232



SS209 - SS214 - SS219
SS801



SS304 - SS305



SS307



SS311 - SS315 - SS355



SS440



SS467

Stock #	Diameter	HP	Volts	Amps.	RPM	"A"	Shaft	Rotation	Replaces
SS601	Skeleton	---	120	0.75	3000	3/4" Stack	1/4" x 2-5/16"	CCWSE	30070007, 162
SS603	Skeleton	---	120	0.63	2400	5/8" Stack	7/32" x 2-1/8"	CCWSE	81096, 81795, 81826, 81827, 81993, 81994, K2230
SS604	Skeleton	---	120	0.78	2700	5/8" Stack	3/16" x 1.26"	CCWSE	81058
SS605	Skeleton	---	120	1.00	2800	5/8" Stack	3/16" x 1.74"	CCWSE	Vent Fan
SS610	Skeleton	---	120	1.20	2400/2	7/8" Stack	7/32" x 1.21"	CCWSE	300990011, 12, 51000
SS611	Skeleton	---	120	0.60	1500	1/2" Stack	3/16" x 1.65"	CCWSE	3008001
SS613	Skeleton	---	120	0.56	1600	5/8" Stack	7/32" x 2.50"	CCWSE	64620
SS3100	Skeleton	---	115	0.59	3000	5/8" Stack	7/32" x 1-11/16"	CCWSE	C-65878
SS3101	Skeleton	---	120	0.70	3000/2	7/8" Stack	7/32" x 1-15/16"	CWSE	C-52736, C-27987
SS3103	Skeleton	---	120	0.81	3000	3/4" Stack	7/32" x 2-7/16"	CCWSE	C-63676, C-68626, 27
SS3670	Skeleton	---	120 / 240	0.40 / 0.26	3000	5/8" Stack	3/16" x 1-9/16"	CWSE	Vent Fan Kit
SS201	3.3"	1/50	115	0.90	1430	2.12"	1/4" x 2.20"	CCWSE	18692
SS202	3.3"	1/40	115	1.00	1550	2.47"	1/4" x 1.30"	CCWSE	2868-407, 409,076, 82879
SS203	3.3"	1/70	115	0.90	1600	2.09"	1/4" x 1.56"	CWSE	Vent Fan
SS207	3.3"	1/80	115	0.80	1600	2.00"	1/4" x 1.56"	CCWSE	2868-405, 23405, 23388
SS209	3.3"	1/50	115	0.85	1550	2.34"	1/4" x 1.56"	CCWSE	80230, 80469
SS214	3.3"	1/40	115	0.80	2700	2.83"	1/4" x 1.45"	CCWSE	Vent Fan
SS219	3.3"	1/20	115	1.80	1550	2.84"	5/16" x 2.20"	CCWSE	80405, 80747
SS232	3.3"	1/70	120	0.70	2800	2.56"	1/4" x 1.28"	CWSE	80215, 80675, 26733
SS304	3.3"	1/40	115	0.89	1550	2.47"	1/4" x 1.60"	CCWSE	Vent Fan
SS305	3.3"	1/50	115	1.00	2800	2.33"	1/4" x 1.50"	CCWSE	80695
SS307	3.3"	1/25	115	1.45	3000	3.30"	1/4" x 1.26"	CWSE	85680
SS311	3.3"	1/100	115	0.65	1550	2.10"	1/4" x 1.20"	CCWSE	2868-505-022
SS315	3.3"	1/100	120	0.50	1550	2.09"	1/4" x 1.20"	CWSE	2868-507-098
SS355 •	3.3"	1/15	115	2.20	1550	3.10"	5/16" x 1.90"	CCWSE	81918
SS440 ~	3.3"	1/20	120	1.60	1550	3.16"	3.80" x 5/16" x 3.80"	CWLE	81905, 80734, 26757
SS467 ~	3.3"	1/20	120	1.40	1550	3.10"	1.70" x 5/16" x 1.70"	CWLE	30080059, 30080060
SS506	3.3"	1/140	115	0.50	1400	1.87"	1/4" x 2.00"	CCWSE	2868-402-001, 004
SS801	3.3"	1/45	115	0.90	1550	2.25"	5/16" x 1.87"	CCWSE	118013, 18692, 26754, 80101, 80469

Nutech



SS2655

Stock #	Diameter	HP	Volts	Amps.	RPM	"A"	Shaft	Rotation	Replaces
SS2655 ●*~	5.5"	1/12	120	1.34	1550	3.16"	2.82" x 3/8" x 2.82"	CCWLE	A0812B2355

Ouellet



SS212S - MO-019



SS217



MO-020



MO-022



E004



F026

Stock #	Diameter	HP	Volts	Amps.	RPM	"A"	Shaft	Rotation	Replaces
SS212S	3.3"	1/35	230	0.55	1550	2.80"	5/16" x 3.50"	CWSE	MOT03
SS217	3.3"	1/40	230	0.50	1550	2.30"	1/4" x 1.50"	CCWSE	MOT04
MO-019	3.3"	1/25	240	0.70	1550	2.75"	5/16" x 3.50"	CWSE	JA2P265
MO-020 ●	3.3"	1/30	240	0.64	1550	2.88"	5/16" x 1.50"	CCWSE	JB2P080
MO-022 ●	5.5"	1/3	575 - 3Ø	0.68	1140	6.37"	1/2" x 4.56"	REV.	12348-001
E004 ●	5.5"	1/6	575 - 3Ø	0.30	1140	4.37"	1/2" x 4.60"	REV.	3J124HAX
F026 ●	5.5"	1/3	480 / 575 - 1Ø	0.90	1725	4.32"	1/2" x 4.13"	CWSE	PCA1800-61-1, MOT07

Penn Ventilator (Zephyr)

(Continued on Page 35)



56342 - 56343



56344



56345



56346



56347



56348



60024 - 60030



60076 - 63699



63745 - 63746



63747 - 63748



63749



63750



63751 - 63752



63821

Stock #	Diameter	HP	Volts	Amps.	RPM	"A"	Shaft	Rotation	Replaces
56342	3.3"	1/70	115	1.00 / 0.50	1550/2	2.46"	3/8" x 5-1/2"	CWSE	56342-0
56343	3.3"	0.27	115	1.32	1550/2	2.46"	3/8" x 5-3/4"	CWSE	56343-0, JA2M414
56344 ●*	3.3"	0.08	115	1.60 / 1.00	1550/2	4.11"	3/8" x 4.75"	CWSE	56344-0, JE2H047
56345 *	3.3"	1/25	115	1.00	1050	4.80"	3/8" x 4.75"	CWSE	56345-0
56346 ●*	3.3"	0.27	115	3.20 / 1.90	1550/2	4.62"	3/8" x 5.50"	CWSE	56346-0, JE2K007
56347 ~*	3.3"	1/12	115	1.60	1050	4.14"	6.10" x 3/8" x 6.10"	CCWLE	56347-0
56348 ~	5.0"	1/10	115	3.90	1050	3.62"	6-1/4" x 1/2" x 6-1/4"	CCWLE	56348-0
60024	3.3"	1/30	115	1.40	1550	2.75"	5/16" x 1-1/2"	CWSE	60024-0

(●) Ball Bearing
 (*) Permanent Split Capacitor Design
 (-) Double Shafted

Penn Ventilator (Zephyr)

(Continued from Page 34)

Stock #	Diameter	HP	Volts	Amps.	RPM	"A"	Shaft	Rotation	Replaces
60030	3.3"	1/80	115	0.74	1400	2.17"	1/4" x 1-3/4"	CWSE	60030-0
60076 ●*	5.5"	1/6	115	3.40	1300/2	4.34"	1/2" x 2.65"	CWSE	60076-0
63699 ●*	5.5"	1/4	115	3.40	1725	4.37"	1/2" x 4.77"	CWSE	63699-0
63745 *	3.3"	1/30	115	0.50 / 0.40	1550/2	3.54"	3/8" x 3.69"	CWSE	63745-0
63746 ●*	3.3"	1/12	115	1.50 / 0.90	1550/2	4.10"	3/8" x 3.40"	CWSE	63746-0, JE2H057
63747 *	4.4"	1/7	115	2.50	1550/3	4.00"	1/2" x 2.20"	CWSE	63747-0
63748 *	4.4"	1/6	115	1.80	1550/3	4.00"	1/2" x 2.60"	CWSE	63748-0
63749 ●*	5.5"	1/4	115	2.80	1725	4.52"	1/2" x 3.00"	CWSE	63749-0
63750 ●*	5.5"	1/3	115	4.00	1550/3	6.00"	1/2" x 5.55"	CWSE	63750-0
63751 ●*	5.5"	1/2	120	5.00	1650/2	4.27"	1/2" x 5.50"	CWSE	63751-0
63752 ●*	5.5"	3/4	115	8.60 / 9.60	1625	5.72"	1/2" x 5.33"	CWSE	63752-0
63821 ● *	4.4"	1/4	115	2.70	1550	5.00"	1/2" x 2.60"	CCWSE	63821-0

Ref Plus



RMT0004 - RMT0005

RMT0062

SS368 - SS369

MA1074

Stock #	Diameter	HP	Volts	Amps.	RPM	"A"	Shaft	Rotation	Replaces
RMT0004 ●	SQ	34W	115	1.60	1550	3-9/16"	Hubless	CCWSE	NU-34-45-2/1543
RMT0005 ●	SQ	34W	230	0.80	1550	3-9/16"	Hubless	CCWSE	NU-34-45-4/1542
RMT0062 ●*	56Y	1-1/2	575	2.50	860	10.50"	5/8" x 2.50"	REV.	43846, 43424
SS368	3.3"	1/20	115	1.80 / 2.10	1550 / 1300	2.84"	5/16" x 2.75"	CCWSE	RMT-0011
SS369	3.3"	1/20	208 / 230	0.95	1550	2.84"	5/16" x 2.75"	CCWSE	RMT-0012
MA1074 ●	56Y	2	575	3.10	1140	10.00"	5/8" x 3.00"	REV.	RMT-0064

Reversomatic



SS630

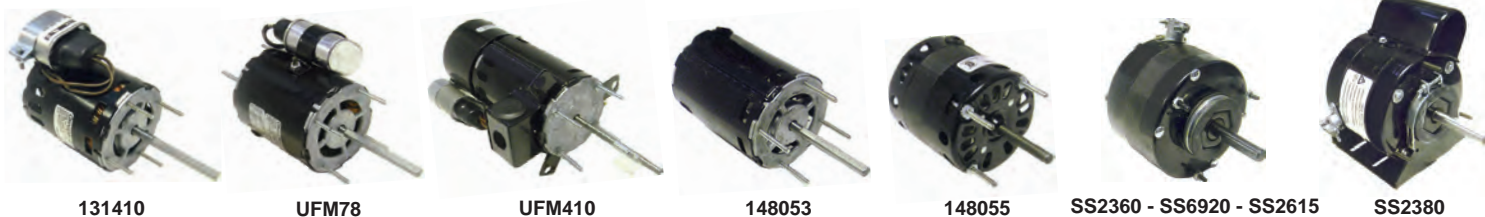
SS260 - SS262 - SS264 - SS266

SS2603 - SS2604

SS2605

Stock #	Diameter	HP	Volts	Amps.	RPM	"A"	Shaft	Rotation	Replaces
SS630	Skeleton	---	120	0.75	3000	1/2" Stack	7/32" x 1-13/16"	CCWSE	EB50
SS260	3.3"	1/90	115	0.60	1500	2.09"	5/16" x 1.09"	CCWSE	B100, EB60
SS262	3.3"	1/40	115	1.10	1550	2.34"	5/16" x 1.60"	CCWSE	K100, BB100
SS264	3.3"	1/75	120	0.70	1550	2.34"	5/16" x 2.06"	CCWSE	QK100
SS266	3.3"	1/20	120	1.45	1550	2.84"	5/16" x 1.40"	CCWSE	BK100
SS2603	4.1"	1/35	115	1.15	1550	3.17"	1/2" x 2.10"	CCWSE	DB200, DB260
SS2604	4.1"	1/10	120	2.65	1550	3.42"	1/2" x 2.05"	CCWSE	DB300
SS2605	5.0"	1/12	115	3.00	1050	2.97"	1/2" x 1.98"	CCWSE	QBD300, GPD450

Reznor



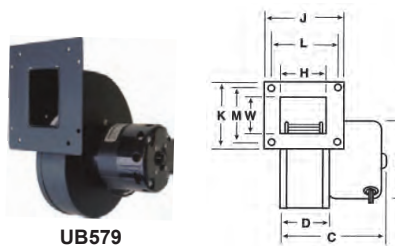
Stock #	Diameter	HP	Volts	Amps.	RPM	"A"	Shaft	Rotation	Replaces
131410 *	3.3"	1/10	115	1.60	3000	4.10"	5/16" x 3.20"	CWLE	131410
UFM78 ●*	3.3"	1/10	115 / 230	1.30 / 0.70	3200	4-1/8"	5/16" x 3.25"	REV.	43846 & 43424
UFM410 ●*	3.3"	1/10	115 / 230	1.40 / 0.70	3000	6.98"	1/4" x 3.70"	REV.	D410, 43846 & 43424
148053 ●*	3.3"	1/20	115	0.70	3300	4.54"	5/16" x 3.00"	CWSE	148053
148055	3.3"	1/33	115	1.00	3300	3.26"	5/16" x 2.00"	CWSE	148055
SS2360	5.0"	1/15	115	2.30	1050	3.26"	1/2" x 2.80"	CWSE	R2360
SS6920	5.0"	1/15	115	2.70	1050	3.87"	3/8" x 3.62"	CWSE	R6920
SS2615	5.0"	1/8	115	4.60	1050	3.87"	1/2" x 3.25"	CWSE	R2615
SS2380 *	5.0"	1/8	115	2.30	1075	4.00"	1/2" x 3.00"	CWSE	R2380

Swimming Pool Heat Pump (MaxTemp)



Stock #	Diameter	HP	Volts	Amps.	RPM	"A"	Shaft	Rotation	Replaces
87219	3.3"	1/25	230	0.86	1550	2-3/4"	5/16" x 1.88"	CWSE	7163-7219

Schwank



Stock #	HP	Volts	Amps.	RPM	Rotation	"C"	"D"	"F"	"J"	"K"	"L"	"M"	"H"	"W"
UB579	1/35	120	1.20	3000	CWLE	5.38"	1.88"	3.30"	4.50"	5.13"	4.13"	4.13"	1.75"	2.58"

(●) Ball Bearing
 (*) Permanent Split Capacitor Design

Tempspec



SS799 - SS2799

Stock #	Diameter	HP	Volts	Amps.	RPM	"A"	Shaft	Rotation	Replaces
SS799 *	5.0"	1/8	115	2.10	1000/5	3.61"	1/2" x 5.00"	CWSE	DD-029
SS2799 *	5.5"	1/6	115	2.60	950/5	3.98"	1/2" x 4.40"	CWSE	DD-030

Tjernlund



950-1020



950-1021



950-1022

Stock #	Diameter	HP	Volts	Amps.	RPM	"A"	Shaft	Rotation	Replaces
950-1020	3.3"	1/25	115	1.37	3000	4.20"	5/16" x 2.25"	CCWSE	950-1020
950-1021 *	3.3"	1/7	115	1.50	3300	5.42"	3/8" x 2.25"	CCWSE	950-1021
950-1022 ●*	5.5"	1/5	115	2.80	1700	4.87"	1/2" x 3.40"	CCWSE	950-1022

Torin



SS610



SS313

Stock #	Diameter	HP	Volts	Amps.	RPM	"A"	Shaft	Rotation	Replaces
SS610	Skeleton	---	120	1.20	2400/2	7/8" Stack	7/32" x 1-3/16"	CCWSE	7627171
SS313 ●	3.3"	1/15	115	2.20	1550	3.58"	5/16" x 3.00"	CWSE	Evaporator

Trane



SS303 - SS213

Stock #	Diameter	HP	Volts	Amps.	RPM	"A"	Shaft	Rotation	Replaces
SS303 ●	3.3"	1/25	115	1.50	1550	3.77"	5/16" x 3.26"	CWSE	70270010
SS213	3.3"	1/25	115	1.40	1550	3.09"	5/16" x 1.78"	CWSE	70200011

Tyler



SS605

Stock #	Diameter	HP	Volts	Amps.	RPM	"A"	Shaft	Rotation	Replaces
SS605	Skeleton	---	120	1.00	2800	5/8" Stack	3/16" x 1.74"	CCWSE	Evaporator

Unilux



SS799 - SS2799

Stock #	Diameter	HP	Volts	Amps.	RPM	"A"	Shaft	Rotation	Replaces
SS799 *	5.0"	1/8	115	2.10	1000/5	3.61"	1/2" x 5.00"	CWSE	DD-029
SS2799 *	5.5"	1/6	115	2.60	950/5	3.98"	1/2" x 4.40"	CWSE	DD-030

Venmar, VanEE



11811



12026



12027



SS348



SS438



SS462

Stock #	Diameter	HP	Volts	Amps.	RPM	"A"	Shaft	Rotation	Replaces
11811 *	3.3"	1/6	120	2.10	1630 / 2	5.10"	3/8" x 1.90"	CCWSE	11811, ER40200
12026 ~●*	3.3"	1/8	120	1.89	1630	4.75"	2.93" x 3/8" x 2.93"	CWLE	12026
12027 ~*	3.3"	1/12	120	1.20	1625 / 3	4.14"	3.50" x 3/8" x 3.50"	CWLE	12027
SS348 *	3.3"	1/15	115	1.30	1550 / 2	5.00"	3/8" x 3.00"	CWSE	M1703, 11802100
SS438 *	3.3"	1/14	115	1.46	1625 / 2	4.05"	5/16" x 1.88"	CCWSE	01038
SS462 ~*	3.3"	1/12	120	1.20	1625 / 3	4.14"	3.50" x 3/8" x 3.50"	CWLE	02101

(●) Ball Bearing
 (*) Permanent Split Capacitor Design
 (-) Double Shafted

Woodstove



SS250

Stock #	Diameter	HP	Volts	Amps.	RPM	"A"	Shaft	Rotation	Replaces
SS250	3.3"	1/70	120	0.65	1500	3.71"	Hubless	CWSE	7173-0867, 2868-509-042

Woods



SS235 - SS236



SS336



SS506



SS510

Stock #	Diameter	HP	Volts	Amps.	RPM	"A"	Shaft	Rotation	Replaces
SS235	3.3"	1/80	115	0.90	1050	2.35"	1/4" x 1.10"	CWSE	270099010
SS236	3.3"	1/50	115	1.00	1575	2.10"	1/4" x 1.00"	CWSE	27009909
SS336	3.3"	1/20	115	1.80	1550	2.50"	1/4" x 1.17"	CWSE	270099012
SS506	3.3"	1/140	115	0.50	1400	1.87"	1/4" x 2.00"	CCWSE	2N8701
SS510 ~	3.3"	1/50	120	1.10	1250	2.12"	1.19" x 1/4 x 1.53"	CWLE	Humidifier

York



UFM653



SS2360 - SS6920 - SS2615



SS2380

Stock #	Diameter	HP	Volts	Amps.	RPM	"A"	Shaft	Rotation	Replaces
UFM653 •	3.3"	1/12	230/460	1.20 / 0.60	3000	6-3/4"	1/4" x 2.25"	CCWSE	D1, D2, D3 Roof Top Units
SS2360	5.0"	1/15	115	2.30	1050	3.32"	1/2" x 2.80"	CWSE	Unit Heater
SS6920	5.0"	1/15	115	2.70	1050	3.87"	3/8" x 3.55"	CWSE	Unit Heater
SS2615	5.0"	1/8	115	4.60	1050	3.87"	1/2" x 3.25"	CWSE	Unit Heater
SS2380 *	5.0"	1/8	115	2.30	1075	4.00"	1/2" x 3.00"	CWSE	Unit Heater

48 Frame Split Phase Belt Drive Motors

Features:

- Continuous Duty
- Class 'B' Insulation
- Open Drip-Proof
- Single Speed
- 40°C Ambient Rating
- Single & Dual Voltage
- Automatic Overload
- 60 Hz.
- 1/2" to 5/8" Sleeve & Key Included
- Resilient Base has 48 & 56 Frame Mounting Holes
- Self Aligning Sleeve & Sealed Ball Bearings



All Models

Stock #	HP	Volts	Amps.	RPM	"A"	Shaft	Rotation	Frame
SS933	1/4	115	4.80	1725	6.81"	1/2" x 1.50"	REV.	48Y
SS934	1/3	115	6.60	1725	6.81"	1/2" x 1.50"	REV.	48Y
SS935	1/2	115	8.30	1725	7.76"	1/2" x 1.50"	REV.	48Y
SS934B ●	1/3	115	6.60	1725	6.81"	1/2" x 1.50"	REV.	48Y
SS935B ●	1/2	115	7.60	1725	6.81"	1/2" x 1.50"	REV.	48Y
SS933D ●	1/4	115/208-230	4.60/2.20-2.10	1725	6.75"	1/2" x 1.88"	REV.	48/56
SS934D ●	1/3	115/208-230	6.60/3.40-3.10	1725	6.75"	1/2" x 1.88"	REV.	48/56
SS935D ●	1/2	115/208-230	7.60/3.70-3.80	1725	8.58"	1/2" x 1.88"	REV.	48/56
SS936D ●	3/4	115/208-230	11.60/5.90-5.80	1725	10.55"	5/8" x 1.88"	REV.	56H

48 Frame 575 Volt - Direct Drive Blower Motors

Features:

- Resilient Rings
- P.S.C Design
- Extended Thru-Bolts on Shaft End
- Single Phase
- Open Construction
- Sealed Ball Bearings



All Models

Available Accessories



POC15-1 - POC25-1



1223A - 1364A



1479 - 1495

Motors

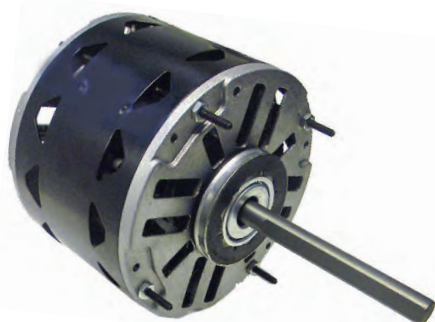
Stock #	Diameter	HP	Volts	Amps.	RPM	"A"	Shaft	Rotation	Replaces
5BD1076	5.5"	3/4	575	2.30	1075 / 2	6.30"	1/2" x 5.00"	REV.	HQ1095096, F34575DD, 21A309661P01 X70671479-010, 024-31946-003
5BD1106	5.5"	1	575	2.40	1075 / 2	6.50"	1/2" x 5.00"	REV.	F1575DD, 50HJ900575, 88C7601 X70671181-017, X70671479-001

Accessories

Stock #	Description			
POC15-1	15 MFD / 370 VAC - Oval	Case Size: 2.16" x 3.60"	Fits: 5BD1076	
POC25-1	25 MFD / 370 VAC - Oval	Case Size: 2.90" x 3.60"	Fits: 5BD1106	
1223A	48 Frame (Dia: 5-5/8")	Min B.C.D: 6-7/8"	Max B.C.D: 8-1/8"	Lug Size: SML. 1-3/4"
1364A	48 Frame (Dia: 5-5/8")	Min B.C.D: 8-1/8"	Max B.C.D: 12-1/8"	Lug Size: LRG. 4"
1479	48 Frame (Dia: 5-5/8")	Bolt Circle: 10"		
1495	48 Frame (Dia: 5-5/8")	Bolt Circle: 11"		

Features:

- P.S.C Design
- 40°C Ambient Rating
- Reversing Plug
- Extended Thru-Bolts
- Resilient Rings Included
- Thermally Protected
- Open Construction
- Long Life Self Aligning Sleeve Bearings
- Motors Noted (x) include 3 Welded Flex Arms



Available Accessories



Motors

Stock #	HP	Volts	Amps.	RPM	"A"	Shaft	Rotation	Capacitor
SS3583	1/4	115	4.20	1075 / 3	4.00"	1/2" x 4.00"	REV.	5 / 370
SS3584	1/4	208 - 230	2.00	1075 / 3	4.00"	1/2" x 4.00"	REV.	5 / 370
SS3585	1/3	115	5.50	1075 / 3	4.36"	1/2" x 4.00"	REV.	7.5 / 370
SS3586	1/3	208 - 230	2.80	1075 / 3	4.36"	1/2" x 4.00"	REV.	5 / 370
SS3587	1/2	115	7.50	1075 / 3	4.86"	1/2" x 4.00"	REV.	10 / 370
SS3588	1/2	208 - 230	3.60	1075 / 3	4.86"	1/2" x 4.00"	REV.	10 / 370
SS3589	3/4	115	10.20	1075 / 3	5.36"	1/2" x 4.00"	REV.	15 / 370
SS3590	3/4	208 - 230	5.50	1075 / 3	5.36"	1/2" x 4.00"	REV.	10 / 370
SS752 x	1/4	115	3.60	1075 / 4	4.05"	1/2" x 6.00"	REV.	5 / 370
SS753 x	1/3	115	4.80	1075 / 4	4.27"	1/2" x 6.00"	REV.	10 / 370
SS754 x	1/2	115	8.00	1075 / 4	4.82"	1/2" x 6.00"	REV.	10 / 370
SS973 x	1/3	208 - 230	2.30 - 2.50	1075 / 4	4.27"	1/2" x 6.00"	REV.	10 / 370
SS974 x	1/2	208 - 230	3.30 - 4.00	1075 / 4	4.82"	1/2" x 6.00"	REV.	10 / 370

Accessories

Stock #	Description
POC5-1	5 MFD / 370 VAC - Oval Case Size: 2.16" x 2.062"
POC7.5-1	7.5 MFD / 370 VAC - Oval Case Size: 2.16" x 2.812"
POC10-1	10 MFD / 370 VAC - Oval Case Size: 2.16" x 2.812"
POC15-1	5 MFD / 370 VAC - Oval Case Size: 2.16" x 3.60"
FLEX50	Flex Mounting Kit for 42 Frame (Dia: 5.0") 2" Band - 9" & 10" B.C. Mounting Holes
FLEX55	Flex Mounting Kit for 48 Frame (Dia: 5-5/8") 2" Band - 9" & 10" B.C. Mounting Holes
1223A	48 Frame (Dia: 5-5/8") Min B.C.D: 6-7/8" Max B.C.D: 8-1/8" Lug Size: SML. 1-3/4"
1364A	48 Frame (Dia: 5-5/8") Min B.C.D: 8-1/8" Max B.C.D: 12-1/8" Lug Size: LRG. 4"

48 Frame Condenser Fan Motors

Features:

- P.S.C Design
- 60°C Ambient Rating
- Reversing Plug
- Extended Thru-Bolts
- Shaft Slinger
- Totally Enclosed - Air Over Construction
- Sealed Ball Bearings

Available Accessories



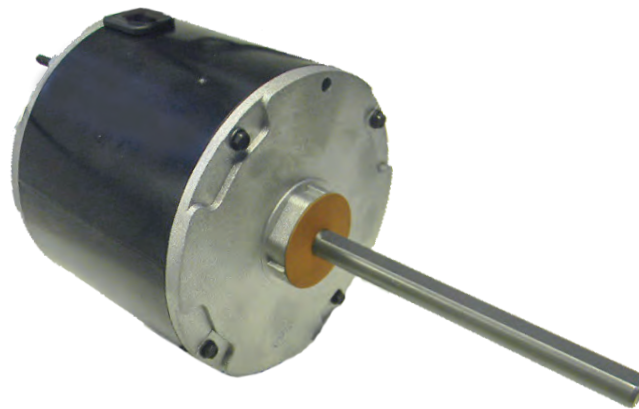
POC5-1 - POC7.5-1
POC10-1



1330A



1223A - 1364A



All Models

Motors

Stock #	HP	Volts	Amps.	RPM	"A"	Shaft	Rotation	Capacitor
SS3727	1/6	208 - 230	1.30	1075	3.86"	1/2" x 6.00"	REV.	5 / 370
SS3728	1/4	208 - 230	2.00	1075	4.11"	1/2" x 6.00"	REV.	5 / 370
SS739B	1/4	208 - 230	1.90	825	4.25"	1/2" x 6.50"	REV.	5 / 370
SS3729	1/3	208 - 230	2.70	1075	4.61"	1/2" x 6.00"	REV.	7.5 / 370
SS740B	1/3	208 - 230	2.10	825	5.00"	1/2" x 6.50"	REV.	7.5 / 370
SS3730	1/2	208 - 230	3.50	1075	5.11"	1/2" x 6.00"	REV.	10 / 370
SS3731	3/4	208 - 230	5.30	1075	5.36"	1/2" x 6.00"	REV.	10 / 370

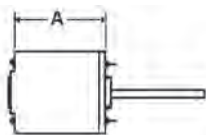
Accessories

Stock #	Description
POC5-1	5 MFD / 370 VAC - Oval Case Size: 2.16" x 2.062"
POC7.5-1	7.5 MFD / 370 VAC - Oval Case Size: 2.16" x 2.812"
POC10-1	10 MFD / 370 VAC - Oval Case Size: 2.16" x 2.812"
1330A	Plastic Rain Shield 1/2" Bore
1223A	Diameter: 48 Frame Min B.C.D: 6-7/8" Max B.C.D: 8-1/8" Lug Size: SML. 1-3/4"
1364A	Diameter: 48 Frame Min B.C.D: 8-1/8" Max B.C.D: 12-1/8" Lug Size: LRG. 4"

48 Frame Unit Heater & Exhaust Fan Motors

Features:

- P.S.C Design
- Round Body, Includes Resilient Rings
- Reversing Plug
- Thermally Protected
- Totally Enclosed - Air Over Construction
- Sealed Ball Bearings



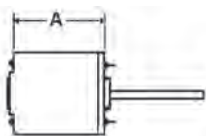
All Models

Stock #	HP	Volts	Amps.	RPM	"A"	Shaft	Rotation	Capacitor
SS749	1/6	115	2.40	1075	4.52"	1/2" x 4.50"	REV.	Included
SS750	1/4	115	4.10	1075	4.52"	1/2" x 4.50"	REV.	Included
SS751	1/3	115	5.00	1075	4.52"	1/2" x 4.50"	REV.	Included

48 Frame Pedestal Fan Air Circulator Motors

Features:

- P.S.C Design
- Yoke Mount - Extended Thru-Bolts
- 2 Speeds With Pull Chain
- 10 Foot Cord & Plug
- Thermally Protected
- Totally Enclosed - Air Over Construction
- Sealed Ball Bearings



All Models

Stock #	HP	Volts	Amps.	RPM	"A"	Shaft	Rotation	Capacitor
SS486	1/4	115	3.40	1100 / 2	6.50"	1/2" x 3.00"	REV.	Included
SS647	1/3	115	4.40	1100 / 2	6.90"	1/2" x 3.00"	REV.	Included

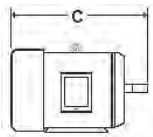
General Purpose & Farm Duty Single Phase Motors - Rolled Steel TEFC

Features:

- Rolled Steel Construction
- Continuous Duty
- Class 'B' Insulation
- High Efficiency Capacitor Start/Run Design
- UL Listed & CSA Approved
- Reversible
- 40°C Ambient
- Removable Rigid Base
- Manual Overload
- 1.15 S.F.
- 60 Hz.
- Ball Bearings



All Models



Stock #	HP	Volts	Amps.	RPM	"C"	Frame
FD141C	1/3	115 / 208-230	4.70 / 2.50	3600	12.00"	56C
FD142C	1/2	115 / 208-230	5.90 / 3.10	3600	12.00"	56C
FD143C	3/4	115 / 208-230	8.10 / 4.20	3600	12.00"	56C
FD144C	1	115 / 208-230	8.30 / 4.40	3600	12.00"	56C
FD145C	1.5	115 / 208-230	14.00 / 7.00	3600	12.00"	56C
FD146C	2	115 / 208-230	16.20 / 8.40	3600	13.80"	56C
FD147C	3	208-230	13.00-12.30	3600	14.60"	56C
FD161C	1/3	115 / 208-230	4.30 / 2.30	1800	12.20"	56C
FD162C	1/2	115 / 208-230	5.80 / 3.00	1800	12.00"	56C
FD163C	3/4	115 / 208-230	8.10 / 4.20	1800	12.00"	56C
FD164C	1	115 / 208-230	9.20 / 5.00	1800	12.00"	56C
FD165C	1.5	115 / 208-230	13.30 / 7.10	1800	12.60"	56C
FD166C	2	115 / 208-230	16.50 / 9.00	1800	14.20"	56HC
FD176	2	115 / 208-230	16.50 / 8.30	1800	14.20"	145T
FD176C	2	115 / 208-230	16.50 / 8.30	1800	14.20"	145TC

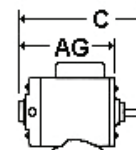
General Purpose Single Phase Motors - Rolled Steel ODP

Features:

- Continuous Duty
- Class 'B' Insulation
- Capacitor Start/Run
- UL Listed & CSA Approved
- Reversible
- 40°C Ambient
- Rigid Base - Dual Mounting Holes
- No Overload
- Rolled Steel Construction
- 1.15 S.F.
- 60 Hz.
- Ball Bearings



All Models

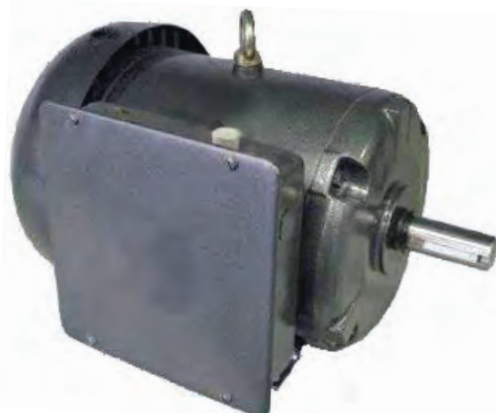


Stock #	HP	Volts	Amps	RPM	"C"	Frame	"AG"
OR547	3	208 - 230	13.50 - 11.90	1800	15.75"	182T	12.80"
OR548	5	208 - 230	22.50 - 20.00	1800	15.75"	184T	12.80"

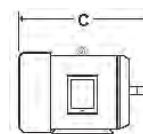
General Purpose & Farm Duty Single Phase Motors - Rolled Steel TEFC

Features:

- Continuous Duty
- Class 'F' Insulation
- Capacitor Start/Run
- UL Listed & CSA Approved
- Reversible
- 'C' Face Kits Available
- 40°C Ambient
- Rigid Base - Dual Mounting Holes
- Rolled Steel Construction
- 1.15 S.F.
- 60 Hz.
- Ball Bearings



All Models

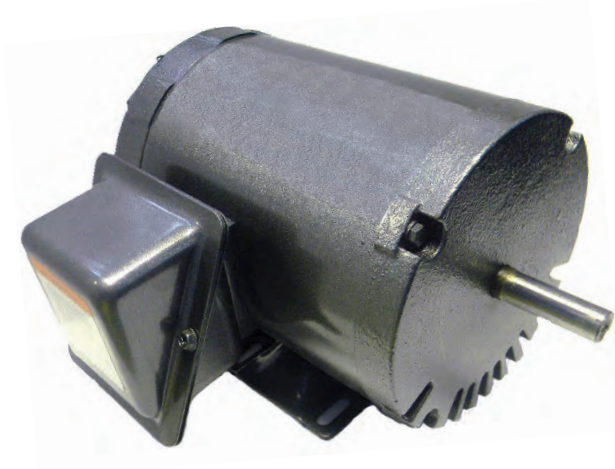


Stock #	HP	Volts	Amps	RPM	"C"	Frame	Comments
FD127	3	208 - 230	12.40 - 14.00	3600	16.70"	182T	Manual Overload
FD128	5	208 - 230	23.00 - 20.00	3600	16.70"	184T	Manual Overload
FD129	7.5	208 - 230	31.50 - 29.00	3600	16.70"	213T	No Overload
FD12A	10	208 - 230	43.00 - 39.00	3600	20.30"	215T	No Overload
FD177	3	208 - 230	14.50 - 12.60	1800	16.70"	182T	Manual Overload
FD178	5	208 - 230	22.80 - 20.10	1800	18.10"	184T	Manual Overload
FD179	7.5	208 - 230	33.00 - 30.00	1800	20.30"	213T	No Overload
FD17A	10	208 - 230	42.00 - 38.10	1800	20.30"	215T	No Overload

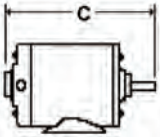
56 Frame Three Phase Motors - Rolled Steel ODP

Features:

- Continuous Duty
- Class 'B' Insulation
- UL Listed & CSA Approved
- 40°C Ambient
- Rigid Base
- Reversible
- Rolled Steel Construction
- 1.15 S.F.
- Ball Bearings



All Models



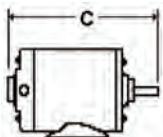
Stock #	HP	Volts	Amps.	RPM	"C"	Frame
WD661	1/3	575	0.65	1800	11.00"	56
WD682	1/2	208-230 / 460	2.20 / 1.10	1800	11.00"	56
WD662	1/2	575	0.87	1800	11.00"	56
WD683	3/4	208-230 / 460	2.80 / 1.40	1800	11.00"	56
WD663	3/4	575	1.12	1800	11.00"	56
WD684	1	208-230 / 460	3.60 / 1.80	1800	11.00"	56
WD664	1	575	1.40	1800	11.00"	56
WD685	1.5	208-230 / 460	4.60 / 2.30	1800	11.00"	56
WD665	1.5	575	1.80	1800	11.00"	56
WD686	2	208-230 / 460	5.80 / 2.90	1800	11.00"	56
WD666	2	575	2.30	1800	11.00"	56

Features:

- Rolled Steel Construction
- Continuous Duty
- Class 'F' Insulation
- UL Listed & CSA Approved
- 40°C Ambient
- Rigid Base
- Reversible
- Dual Mounting Holes in Base
- 1.15 S.F.
- Ball Bearings



All Models

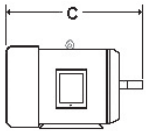


Stock #	HP	Volts	Amps.	RPM	"C"	Frame	Efficiency
ORP674	1	208-230 / 460	3.20 / 1.60	1800	11.60"	143T	85.5%
ORP654	1	575	1.40	1800	11.60"	143T	85.5%
ORP675	1.5	208-230 / 460	4.50 / 2.20	1800	11.60"	145T	86.5%
ORP655	1.5	575	1.80	1800	11.60"	145T	86.5%
ORP676	2	208-230 / 460	5.90 / 2.90	1800	11.60"	145T	86.5%
ORP656	2	575	2.30	1800	11.60"	145T	86.5%
ORP677	3	208-230 / 460	8.00 / 4.00	1800	13.80"	182T	89.5%
ORP657	3	575	3.30	1800	13.80"	182T	89.5%
ORP678	5	208-230 / 460	13.20 / 6.60	1800	13.80"	184T	89.5%
ORP658	5	575	5.40	1800	13.80"	184T	89.5%
ORP679	7.5	208-230 / 460	19.00 / 9.50	1800	16.90"	213T	91.0%
ORP659	7.5	575	7.80	1800	16.90"	213T	91.0%
ORP67A	10	208-230 / 460	25.00 / 12.50	1800	16.90"	215T	91.7%
ORP65A	10	575	10.50	1800	16.90"	215T	91.7%
ORP65B	15	575	14.90	1800	19.75"	254T	93.0%
ORP65C	20	575	19.70	1800	19.75"	256T	93.0%

56 & 56HZ Frame Three Phase Motors - Aluminum Frame TEFC

Features:

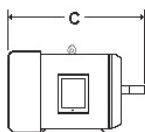
- Aluminum Construction
- Continuous Duty
- Class 'B' Insulation
- Removable Bolt-on Feet
- Reversible
- 40°C Ambient
- UL Listed & CSA Approved
- 3 Positions for Feet Allow for F-1, F-2, F-0 Conduit Box Location
- Inverter Duty 10:1 V.T. / 2:1 C.T.
- Ball Bearings



Stock #	HP	Volts	Amps.	RPM	"C"	Shaft (Dia.)	Frame
WA631	1/3	208-230 / 460	1.26 - 1.14 / 0.57	3600	12.67"	5/8"	56
WA611	1/3	575	0.46	3600	12.67"	5/8"	56
WA681	1/3	208-230 / 460	1.43 - 1.30 / 0.65	1800	12.67"	5/8"	56
WA661	1/3	575	0.52	1800	12.67"	5/8"	56
WA632	1/2	208-230 / 460	1.82 - 1.64 / 0.82	3600	12.67"	5/8"	56
WA612	1/2	575	0.66	3600	12.67"	5/8"	56
WA682	1/2	208-230 / 460	2.12 - 1.92 / 0.96	1800	12.67"	5/8"	56
WA662	1/2	575	0.77	1800	12.67"	5/8"	56
WA633	3/4	208-230 / 460	2.59 - 2.34 / 1.17	3600	12.67"	5/8"	56
WA613	3/4	575	0.94	3600	12.67"	5/8"	56
WA683	3/4	208-230 / 460	2.94 - 2.66 / 1.33	1800	12.67"	5/8"	56
WA663	3/4	575	1.06	1800	12.67"	5/8"	56
WA634	1	208-230 / 460	3.24 - 2.92 / 1.46	3600	13.66"	5/8"	56H
WA614	1	575	1.17	3600	13.66"	5/8"	56H
WA684	1	208-230 / 460	3.84 - 3.48 / 1.74	1800	13.66"	5/8"	56H
WA664	1	575	1.39	1800	13.66"	5/8"	56H
TA624	1	208-230 / 460	3.24 - 2.92 / 1.46	3600	14.02"	7/8"	56HZ
TA604	1	575	1.17	3600	14.02"	7/8"	56HZ
TA674	1	208-230 / 460	3.84 - 3.48 / 1.74	1800	14.02"	7/8"	56HZ
TA654	1	575	1.39	1800	14.02"	7/8"	56HZ

Features:

- Aluminum Construction
- Continuous Duty
- Class 'B' Insulation
- Removable Bolt-on Feet
- Reversible
- 40°C Ambient
- UL Listed & CSA Approved
- 3 Positions for Feet Allow for F-1, F-2, F-0 Conduit Box Location
- Inverter Duty 10:1 V.T. / 2:1 C.T.
- Ball Bearings



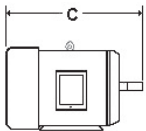
Stock #	HP	Volts	Amps.	RPM	"C"	Shaft (Dia.)	Frame
WA635	1-1/2	208-230/460	4.71 - 4.26 / 2.13	3600	13.66"	5/8"	56H
WA615	1-1/2	575	1.70	3600	13.66"	5/8"	56H
WA685	1-1/2	208-230/460	5.28 - 4.78 / 2.39	1800	13.66"	5/8"	56H
WA665	1-1/2	575	1.91	1800	13.66"	5/8"	56H
TA625	1-1/2	208-230/460	4.71 - 4.26 / 2.13	3600	14.02"	7/8"	56HZ
TA605	1-1/2	575	1.70	3600	14.02"	7/8"	56HZ
TA675	1-1/2	208-230/460	5.28 - 4.78 / 2.39	1800	14.02"	7/8"	56HZ
TA655	1-1/2	575	1.91	1800	14.02"	7/8"	56HZ
WA636	2	208-230/460	6.02 - 5.44 / 2.72	3600	13.66"	5/8"	56H
WA616	2	575	2.18	3600	13.66"	5/8"	56H
WA686	2	208-230/460	6.73 - 6.08 / 3.04	1800	13.66"	5/8"	56H
WA666	2	575	2.43	1800	13.66"	5/8"	56H
TA626	2	208-230/460	6.02 - 5.44 / 2.72	3600	14.02"	7/8"	56HZ
TA606	2	575	2.18	3600	14.02"	7/8"	56HZ
TA676	2	208-230/460	6.73 - 6.08 / 3.04	1800	14.02"	7/8"	56HZ
TA656	2	575	2.43	1800	14.02"	7/8"	56HZ
WA637	3	208-230/460	8.76 - 7.92 / 3.96	3600	13.66"	5/8"	56H
WA617	3	575	3.17	3600	13.66"	5/8"	56H
TA627	3	208-230/460	8.70 - 7.96 / 3.96	3600	14.02"	7/8"	56HZ
TA607	3	575	3.17	3600	14.02"	7/8"	56HZ

56C & 56HCZ Frame Three Phase Motors - Aluminum Frame TEFC

OMNIDRIVE

Features:

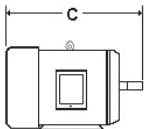
- Aluminum Construction
- Continuous Duty
- Class 'B' Insulation
- Removable Bolt-on Feet
- Reversible
- 40°C Ambient
- UL Listed & CSA Approved
- 3 Positions for Feet Allow for F-1, F-2, F-0 Conduit Box Location
- Inverter Duty 10:1 V.T. / 2:1 C.T.
- Ball Bearings



Stock #	HP	Volts	Amps.	RPM	"C"	Shaft (Dia.)	Frame
WA631C	1/3	208-230 / 460	1.26 - 1.14 / 0.57	3600	12.67"	5/8"	56C
WA611C	1/3	575	0.46	3600	12.67"	5/8"	56C
WA681C	1/3	208-230 / 460	1.43 - 1.30 / 0.65	1800	12.67"	5/8"	56C
WA661C	1/3	575	0.52	1800	12.67"	5/8"	56C
WA632C	1/2	208-230 / 460	1.82 - 1.64 / 0.82	3600	12.67"	5/8"	56C
WA612C	1/2	575	0.66	3600	12.67"	5/8"	56C
WA682C	1/2	208-230 / 460	2.12 - 1.92 / 0.96	1800	12.67"	5/8"	56C
WA662C	1/2	575	0.77	1800	12.67"	5/8"	56C
WA633C	3/4	208-230 / 460	2.59 - 2.34 / 1.17	3600	12.67"	5/8"	56C
WA613C	3/4	575	0.94	3600	12.67"	5/8"	56C
WA683C	3/4	208-230 / 460	2.94 - 2.66 / 1.33	1800	12.67"	5/8"	56C
WA663C	3/4	575	1.06	1800	12.67"	5/8"	56C
WA634C	1	208-230 / 460	3.24 - 2.92 / 1.46	3600	13.66"	5/8"	56HC
WA614C	1	575	1.17	3600	13.66"	5/8"	56HC
WA684C	1	208-230 / 460	3.84 - 3.48 / 1.74	1800	13.66"	5/8"	56HC
WA664C	1	575	1.39	1800	13.66"	5/8"	56HC
TA624C	1	208-230 / 460	3.24 - 2.92 / 1.46	3600	14.02"	7/8"	56HCZ
TA604C	1	575	1.17	3600	14.02"	7/8"	56HCZ
TA674C	1	208-230 / 460	3.84 - 3.48 / 1.74	1800	14.02"	7/8"	56HCZ
TA654C	1	575	1.39	1800	14.02"	7/8"	56HCZ

Features:

- Aluminum Construction
- Continuous Duty
- Class 'B' Insulation
- Removable Bolt-on Feet
- Reversible
- 40°C Ambient
- UL Listed & CSA Approved
- 3 Positions for Feet Allow for F-1, F-2, F-0 Conduit Box Location
- Inverter Duty 10:1 V.T. / 2:1 C.T.
- Ball Bearings



Stock #	HP	Volts	Amps.	RPM	"C"	Shaft (Dia.)	Frame
WA635C	1-1/2	208-230/460	4.71 - 4.26 / 2.13	3600	13.66"	5/8"	56HC
WA615C	1-1/2	575	1.70	3600	13.66"	5/8"	56HC
WA685C	1-1/2	208-230/460	5.28 - 4.78 / 2.39	1800	13.66"	5/8"	56HC
WA665C	1-1/2	575	1.91	1800	13.66"	5/8"	56HC
TA625C	1-1/2	208-230/460	4.71 - 4.26 / 2.13	3600	14.02"	7/8"	56HCZ
TA605C	1-1/2	575	1.70	3600	14.02"	7/8"	56HCZ
TA675C	1-1/2	208-230/460	5.28 - 4.78 / 2.39	1800	14.02"	7/8"	56HCZ
TA655C	1-1/2	575	1.91	1800	14.02"	7/8"	56HCZ
WA636C	2	208-230/460	6.02 - 5.44 / 2.72	3600	13.66"	5/8"	56HC
WA616C	2	575	2.18	3600	13.66"	5/8"	56HC
WA686C	2	208-230/460	6.73 - 6.08 / 3.04	1800	13.66"	5/8"	56HC
WA666C	2	575	2.43	1800	13.66"	5/8"	56HC
TA626C	2	208-230/460	6.02 - 5.44 / 2.72	3600	14.02"	7/8"	56HCZ
TA606C	2	575	2.18	3600	14.02"	7/8"	56HCZ
TA676C	2	208-230/460	6.73 - 6.08 / 3.04	1800	14.02"	7/8"	56HCZ
TA656C	2	575	2.43	1800	14.02"	7/8"	56HCZ
WA637C	3	208-230/460	8.76 - 7.92 / 3.96	3600	13.66"	5/8"	56HC
WA617C	3	575	3.17	3600	13.66"	5/8"	56HC
TA627C	3	208-230/460	8.70 - 7.96 / 3.96	3600	14.02"	7/8"	56HCZ
TA607C	3	575	3.17	3600	14.02"	7/8"	56HCZ

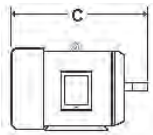
56C Frame Three Phase Motors - Rolled Steel TEFC

Features:

- Rolled Steel Construction
- Continuous Duty
- Class 'B' Insulation
- UL Listed & CSA Approved
- Reversible
- 40°C Ambient
- Rigid Base
- Removable Bolt-on Base
- 1.15 S.F.
- Ball Bearings



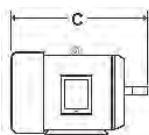
All Models



Stock #	HP	Volts	Amps.	RPM	"C"	Frame
WE681C	1/3	208-230 / 460	1.62 / 0.82	1770	12.60"	56C
WE661C	1/3	575	0.65	1800	12.60"	56C
WE612C	1/2	575	0.82	3600	12.60"	56C
WE682C	1/2	208-230 / 460	2.20 / 1.10	1800	12.60"	56C
WE662C	1/2	575	0.88	1800	12.60"	56C
WE613C	3/4	575	0.90	3600	12.60"	56C
WE683C	3/4	208-230 / 460	2.80 / 1.40	1800	12.60"	56C
WE663C	3/4	575	1.00	1800	12.60"	56C
WE614C	1	575	1.30	3600	12.60"	56C
WE684C	1	208-230 / 460	3.40 / 1.70	1800	12.60"	56C
WE664C	1	575	1.40	1800	12.60"	56C
WE615C	1.5	575	1.80	3600	12.60"	56C
WE685C	1.5	208-230 / 460	4.60 / 2.30	1800	12.60"	56C
WE665C	1.5	575	1.82	1800	12.60"	56C
WE616C	2	575	2.10	3600	12.60"	56C
WE686C	2	208-230 / 460	5.80 / 2.90	1800	12.60"	56C
WE666C	2	575	2.40	1800	12.60"	56C
WE617C	3	575	3.10	3600	13.00"	56C

Features:

- Rolled Steel Construction
- Continuous Duty
- Class 'F' Insulation
- UL Listed & CSA Approved
- Reversible
- 40°C Ambient
- Rigid Base
- Dual Mounting Holes in Base
- 1.15 S.F.
- Ball Bearings



All Models

Stock #	HP	Volts	Amps.	RPM	"C"	Frame	Efficiency
TRP674	1	208-230 / 460	3.00 / 1.50	1800	13.00"	143T	85.5%
TRP654	1	575	1.30	1800	13.00"	143T	85.5%
TRP704	1	575	1.40	1200	13.00"	143T	87.5%
TRP605	1.5	575	1.68	3600	13.00"	143T	84.0%
TRP675	1.5	208-230 / 460	4.80 / 2.40	1800	13.00"	145T	86.5%
TRP655	1.5	575	1.80	1800	13.00"	145T	86.5%
TRP705	1.5	575	2.02	1200	15.70"	182T	87.5%
TRP606	2	575	2.10	3600	13.25"	145T	85.5%
TRP676	2	208-230 / 460	6.00 / 3.00	1800	13.00"	145T	86.5%
TRP656	2	575	2.40	1800	13.00"	145T	86.5%
TRP706	2	575	2.64	1200	15.50"	184T	88.5%
TRP607	3	575	2.10	3600	13.00"	182T	86.5%
TRP677	3	208-230 / 460	19.20 / 9.60	1800	15.70"	182T	89.5%
TRP657	3	575	3.40	1800	15.70"	182T	89.5%
TRP707	3	575	3.92	1200	19.20"	213T	89.5%
TRP608	5	575	5.00	3600	15.70"	184T	88.5%
TRP678	5	208-230 / 460	12.40 / 6.20	1800	15.82"	184T	89.5%
TRP658	5	575	5.20	1800	15.70"	184T	89.5%
TRP708	5	575	6.00	1200	19.20"	215T	89.5%
TRP609	7.5	575	7.40	3600	19.20"	213T	89.5%
TRP679	7.5	208-230 / 460	19.20 / 9.60	1800	18.72"	213T	91.7%
TRP659	7.5	575	8.00	1800	19.20"	213T	91.7%
TRP60A	10	575	9.60	3600	19.20"	215T	90.2%
TRP67A	10	208-230 / 460	19.20 / 9.60	1800	19.20"	215T	91.7%
TRP65A	10	575	10.40	1800	19.20"	215T	91.7%

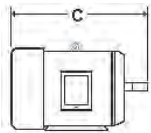
NEMA Premium Three Phase Motors - Cast Iron TEFC

Features:

- Cast Iron Construction
- Solid Full Frame Length Mounting Feet
- Dual Mounting Holes
- Cast Iron Gasketed Conduit Box
- Stainless Steel Nameplate
- Double Lip Seal on Both Ends
- Class 'F' Insulation - Class 'B' Temp. Rise
- NEMA MG 1, EEMAC M1-6, CSA C390
- Double Sealed 'ZZ' Bearings up to 215T
- Standard (Non-Metric) Hardware
- F-2 Field Convertible
- Conduit Box Can be Rotated 90 Degrees
- Ground Lug in Conduit Box
- Rust Preventative Treated Steel Fan Cover
- VPI Insulation System
- 'C' Face Kits Available
- Regreasable Bearings 254T & Larger
- Inverter Duty 20:1 V.T. / 10:1 C.T.
- Oversized Ball Bearings



All Models



THREE YEAR WARRANTY

Stock #	HP	Volts	Amps.	RPM	"C"	Frame	Efficiency	C Face Kit
TCP657	3	575	3.10	1800	15.25"	182T	87.5%	CFP18
TCP658	5	575	5.20	1800	16.00"	184T	87.5%	CFP18
TCP659	7.5	575	7.50	1800	19.00"	213T	89.5%	CFP21
TCP65A	10	575	10.00	1800	22.50"	215T	89.5%	CFP21
TCP65B	15	575	14.90	1800	23.38"	254T	91.0%	CFP25
TCP65C	20	575	19.60	1800	25.13"	256T	91.0%	CFP25
TCP65D	25	575	23.60	1800	28.00"	284T	92.4%	CFP28
TCP65E	30	575	28.30	1800	29.50"	286T	92.4%	CFP28
TCP65F	40	575	37.00	1800	30.25"	324T	93.0%	CFP32
TCP65G	50	575	46.30	1800	31.75"	326T	93.0%	CFP32
TCP65H	60	575	53.60	1800	33.70"	364T	95.0%	CFP36
TCP65I	75	575	66.60	1800	37.10"	365T	95.4%	CFP36
TCP65J	100	575	90.00	1800	38.00"	405T	95.4%	CFP40
TCP65K	125	575	109.00	1800	45.10"	444T	95.4%	CFP44
TCP65L	150	575	130.00	1800	45.10"	445T	95.8%	CFP44
TCP65M	200	575	172.00	1800	53.60"	447T	96.2%	CFP44

Circulator Motors Single Phase Motors - ODP

Features:

- Mounting Bracket
- Open Drip-Proof
- 1800 RPM
- Thermally Protected
- Replacements for OEM Motors such as Armstrong, Bell & Gossett & Taco
- Permanently Sealed Ball Bearings



Type 2A & 2B



Type 2C



Type 2C

Notes:

Type '2A' 4.67" B.C.D. fits # 2 Bearing Assembly

Type '2B' 5.00" B.C.D. fits # 3 & 4 Bearing Assembly

Type '2C' 5.875" B.C.D. fits # 5, 6 & 7 Bearing Assembly

Stock #	HP	Volts	Amps.	Type	Bearing	Rotation	Replaces
SS1350	1/12	115	2.50	2A	Ball	CWSE	R1350, 805316-010, 831000-61, 111034
SS1355	1/6	115	3.80	2A	Ball	CWSE	---
SS1352	1/6	115	3.80	2B	Ball	CWSE	R1352, 817025-001, 831001-061, 111031
SS1354	1/4	115	4.60	2B	Ball	CWSE	R1354, 817025-007, 831002-061, 111040
SS1444	1/4	115	4.60	2C	Ball	CCWSE	R1444, 816141-001
SS1356	1/3	115	6.00	2B	Ball	CWSE	R1356, 817025-013, 831003-061, 111042
SS1446	1/3	115	6.00	2C	Ball	CCWSE	R1446, 816141-002
SS1459	1/2	115-208 / 230	5.70 / 3.00 - 2.90	2C	Ball	REV.	R1459, 811757-001, 111044
SS1462	3/4	115-208 / 230	8.20 / 4.70 - 4.20	2C	Ball	REV.	R1462, 811757-002, 033, 111047

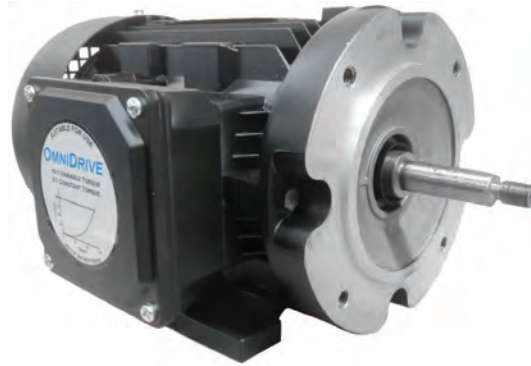
Jet Pump Motors

Three Phase Motors - Aluminum Frame TEFC

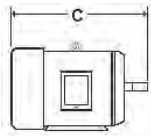
OMNIDRIVE

Features:

- 56J Threaded Shaft
- Aluminum Construction
- Continuous Duty
- Class 'B' Insulation
- Removable Bolt-on Feet
- Reversible
- 40°C Ambient
- UL Listed & CSA Approved
- 3 Positions for Feet Allow for F-1, F-2, F-0 Conduit Box Location
- Inverter Duty 10:1 V.T. / 2:1 C.T.
- Ball Bearings



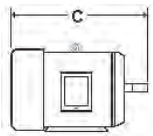
All Models



Stock #	HP	Volts	Amps.	RPM	"C"	Frame
WA631J	1/3	208-230 / 460	1.26 - 1.14 / 0.57	3600	13.19"	56J
WA611J	1/3	575	0.46	3600	13.19"	56J
WA632J	1/2	208-230 / 460	1.82 - 1.64 / 0.82	3600	13.19"	56J
WA612J	1/2	575	0.66	3600	13.19"	56J
WA633J	3/4	208-230 / 460	2.59 - 2.34 / 1.17	3600	13.19"	56J
WA613J	3/4	575	0.94	3600	13.19"	56J
WA634J	1	208-230 / 460	3.24 - 2.92 / 1.46	3600	14.17"	56HJ
WA614J	1	575	1.17	3600	14.17"	56HJ
WA635J	1-1/2	208-230 / 460	4.71 - 4.26 / 2.13	3600	14.17"	56HJ
WA615J	1-1/2	575	1.70	3600	14.17"	56HJ
WA636J	2	208-230 / 460	6.02 - 5.44 / 2.72	3600	14.17"	56HJ
WA616J	2	575	2.18	3600	14.17"	56HJ
WA637J	3	208-230 / 460	8.76 - 7.92 / 3.96	3600	14.17"	56HJ
WA617J	3	575	3.17	3600	14.17"	56HJ

Features:

- Rigid Base - Dual Mounting Holes
- Rolled Steel Construction
- Class 'F' Insulation
- Reversible
- UL Listed & CSA Approved
- 40°C Ambient
- 1.15 S.F.
- Ball Bearings



TEFC



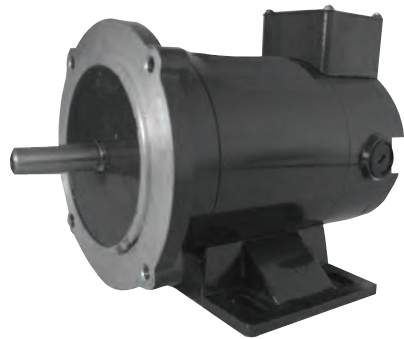
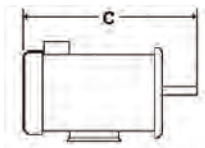
ODP

Stock #	HP	Volts	Amps.	RPM	"C"	Frame	Enclosure
JM617	3	575	3.10	3600	15.75"	145JM	TEFC
JM627	3	575	3.20	3600	14.40"	145JM	ODP
JM607	3	575	3.00	3600	18.10"	182JM	TEFC
JM657	3	575	3.20	1800	18.10"	182JM	TEFC
JM608	5	575	4.70	3600	18.10"	184JM	TEFC
JM658	5	575	5.20	1800	18.10"	184JM	TEFC
JM629	7.5	575	7.10	3600	18.50"	184JM	ODP
JM659	7.5	575	7.30	1800	21.50"	213JM	TEFC
JM60A	10	575	9.44	3600	20.00"	215JM	TEFC
JM65A	10	575	10.00	1800	21.50"	215JM	TEFC

Permanent Magnet DC Motors - TEFC & TENV Construction

Features:

- Continuous Duty
- Class 'F' Insulation
- UL Listed & CSA Approved
- Reversible
- 40°C Ambient
- 1725 RPM
- 56C or 143/5TC Frame
- Removable Rigid Base
- TENV (Type A)
- TEFC (Type B)
- 20:1 C.T. Speed Range
- Ball Bearings



Type A

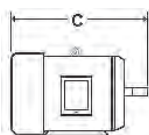


Type B

Stock #	HP	Volts	Amps.	"C"	Type	Frame	Enclosure	Comments
DC500	1/4	90	2.60	10.25"	A	56C	TENV	Brush Number BR56
DC501	1/3	90	3.50	10.25"	A	56C	TENV	Brush Number BR56
DC502	1/2	90	5.00	12.25"	B	56C	TEFC	Brush Number BR56
DC503	3/4	90	7.60	13.75"	B	56C	TEFC	Brush Number BR56
DC504	1	90	10.00	14.75"	B	56C	TEFC	Brush Number BR56
DC511	1/3	180	1.70	10.25"	A	56C	TENV	Brush Number BR56
DC512	1/2	180	2.50	12.25"	B	56C	TEFC	Brush Number BR56
DC513	3/4	180	3.80	13.75"	B	56C	TEFC	Brush Number BR56
DC514	1	180	5.00	14.75"	B	56C	TEFC	Brush Number BR56
DC515	1.5	180	8.00	15.50"	B	145TC	TEFC	Brush Number BR140
DC516	2	180	9.50	18.75"	B	145TC	TEFC	Brush Number BR140
DC517	3	180	14.00	19.25"	B	145TC	TEFC	Brush Number BR140

Features:

- 304 Stainless Steel
- Class 'F' Insulation
- Double Lipped Seals on Both Ends
- Standardized Bearing Cap
- C-Face as a Standard
- Engraved Name Plate
- Totally Enclosed, Fan Cooled (TEFC)
- Totally Enclosed, Non-Ventilated (TENV)
- Oversized Ball Bearings on Both Ends
- Reversible
- High Efficiency
- VPI, Dip and Bake
- 1.15 S.F.



TEFC



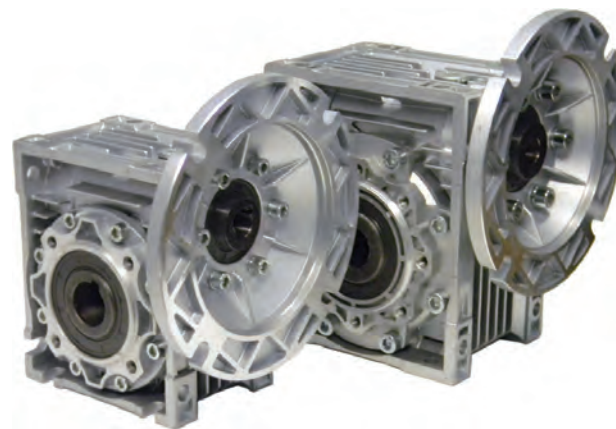
TENV

Stock #	HP	RPM	Volts	Amps.	"C"	Frame	Enclosure	Efficiency
MS612C	1/2	3600	575	0.56	9-7/8"	56C	TENV	78.3%
MS613C	3/4	3600	575	0.84	10.00"	56C	TENV	81.8%
MS614C	1	3600	575	0.96	12-3/8"	56C	TEFC	83.2%
MS605C	1.5	3600	575	1.66	13.00"	143TC	TEFC	84.2%
MS606C	2	3600	575	1.92	13-1/2"	145TC	TEFC	85.0%
MS607C	3	3600	575	3.00	18-5/16"	182TC	TEFC	85.5%
MS608C	5	3600	575	4.80	19.00"	184TC	TEFC	87.5%
MS609C	7.5	3600	575	7.70	20-3/16"	213TC	TEFC	88.5%
MS60AC	10	3600	575	9.86	21-3/8"	215TC	TEFC	89.5%
MS661C	1/3	1800	575	0.46	10-1/2"	56C	TENV	82.7%
MS662C	1/2	1800	575	0.57	10.00"	56C	TENV	83.0%
MS663C	3/4	1800	575	0.86	10.00"	56C	TENV	83.2%
MS664C	1	1800	575	1.14	12-1/2"	56C	TEFC	85.4%
MS665C	1.5	1800	575	1.64	13-1/8"	56C	TEFC	84.0%
MS655C	1.5	1800	575	1.64	13.00"	145TC	TEFC	84.0%
MS666C	2	1800	575	2.09	13-3/4"	56C	TEFC	85.0%
MS656C	2	1800	575	2.09	13-3/4"	145TC	TEFC	85.0%
MS657C	3	1800	575	3.04	18-1/2"	182TC	TEFC	87.5%
MS658C	5	1800	575	5.20	18-7/8"	184TC	TEFC	87.5%
MS659C	7.5	1800	575	8.50	19-3/8"	213TC	TEFC	89.5%
MS65AC	10	1800	575	10.63	21-7/8"	215TC	TEFC	89.5%
MS702C	1/2	1200	575	0.22	10-3/8"	56C	TENV	79.1%
MS703C	3/4	1200	575	1.04	10-3/8"	56C	TENV	82.9%
MS704C	1	1200	575	1.52	12-3/4"	143TC	TEFC	85.1%

Worm Gear Right Angle Speed Reducer

Features:

- Hardened Worm Shaft
- NEMA 56C Face Input
- Double-Lip Oil Seals
- Two Bearings on Input Shaft
- O-Rings on Input & Output Covers
- Worm Reducer Ratings at 1750 RPM Input
- Aluminum Alloy Housing with Heat Sink Design
- Standard Hollow Shaft Output Shaft Design
- Permanently Sealed with Synthetic Lubrication



WGR050

WGR063



Left Hand Single

Right Hand Single

Double Shafts

Output Flange
(Size 50)

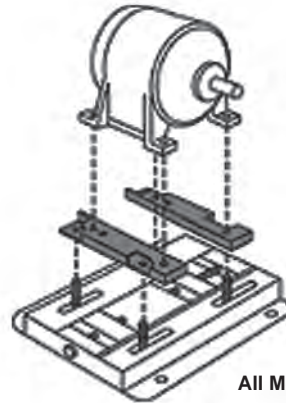
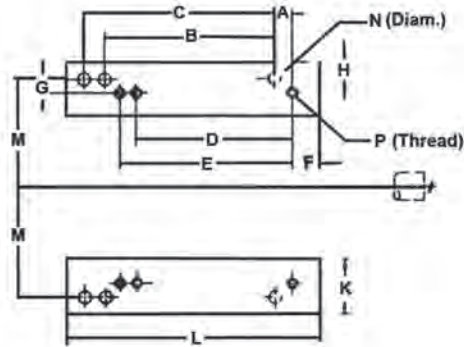
Output Flange
(Size 63)

Technical Specifications

Stock #	Ratio:	5	7.5	10	15	20	25	30	40	50	60	80	100
WGR050	OUTPUT RPM	350	233	175	117	88	70	58	44	35	29	22	18
	MAX. INPUT HP	3.43	2.64	2.06	1.48	1.14	0.90	0.96	0.70	0.57	0.47	0.38	0.28
	O/P TORQUE in-lbs	549	628	637	655	646	619	743	672	646	602	575	487
WGR063	OUTPUT RPM	---	233	175	117	88	70	58	44	35	29	22	18
	MAX. INPUT HP	---	4.77	3.67	2.76	2.05	1.64	1.77	1.27	1.01	0.86	0.66	0.57
	O/P TORQUE in-lbs	---	1133	1150	1239	1194	1150	1416	1283	1194	1150	1079	1044

Accessories

Stock #	Description
WGR050-S1, WGR063-S1	Single Shafts
WGR050-S2, WGR063-S2	Double Shafts
WGR050-OF	Output Flange - Size 50
WGR063-OF	Output Flange - Size 63



All Models

Part Number	Former NEMA	New NEMA	O.A. Height	A	B	C	D	E	F	G	H	K	L	M	N	P
1814T	182	143T	1	1/2	4-1/2		4		3/4	1	1/2	2-1/4	7-1/2	3-3/4	7/16	5/16-18
	182	145T	1	1/2	4-1/2			5	3/4	1	1/2	2-1/4	7-1/2	3-3/4	7/16	5/16-18
	184	143T	1	1/2		5-1/2	4		3/4	1	1/2	2-1/4	7-1/2	3-3/4	7/16	5/16-18
	184	145T	1	1/2		5-1/2		5	3/4	1	1/2	2-1/4	7-1/2	3-3/4	7/16	5/16-18
2118T	213	182T	3/4	1	5-1/2		4-1/2		1	1/2	5/8	1-7/8	9-1/2	4-1/4	7/16	3/8-16
	213	184T	3/4	1	5-1/2			5-1/2	1	1/2	5/8	1-7/8	9-1/2	4-1/4	7/16	3/8-16
	215	182T	3/4	1		7	4-1/2		1	1/2	5/8	1-7/8	9-1/2	4-1/4	7/16	3/8-16
	215	184T	3/4	1		7		5-1/2	1	1/2	5/8	1-7/8	9-1/2	4-1/4	7/16	3/8-16
25U21T	254U	213T	1	1-1/8	8-1/4		5-1/2		1	3/4	3/4	2-1/2	13	5	9/16	3/8-16
	253U	215T	1	1-1/8	8-1/4			7	1	3/4	3/4	2-1/2	13	5	9/16	3/8-16
	256U	213T	1	1-1/8		10	5-1/2		1	3/4	3/4	2-1/2	13	5	9/16	3/8-16
	256U	215T	1	1-1/8		10		7	1	3/4	3/4	2-1/2	13	5	9/16	3/8-16
28U25T	284	254T	3/4	1-3/8	9-1/2		8-1/4		1-1/4	1/2	3/4	2-1/2	14-1/2	5-1/2	9/16	1/2-13
	284U	256T	3/4	1-3/8	9-1/2			10	1-1/4	1/2	3/4	2-1/2	14-1/2	5-1/2	9/16	1/2-13
	286U	254T	3/4	1-3/8		11	8-1/4		1-1/4	1/2	3/4	2-1/2	14-1/2	5-1/2	9/16	1/2-13
	286U	256T	3/4	1-3/8		11		10	1-1/4	1/2	3/4	2-1/2	14-1/2	5-1/2	9/16	1/2-13
32U28T	324U	284T	1	1-1/2	10-1/2		9-1/2		1-1/2	3/4	3/4	3	16	6-1/4	11/16	1/2-13
	324U	286T	1	1-1/2	10-1/2			11	1-1/2	3/4	3/4	3	16	6-1/4	11/16	1/2-13
	326U	284T	1	1-1/2		12	9-1/2		1-1/2	3/4	3/4	3	16	6-1/4	11/16	1/2-13
	326U	286T	1	1-1/2		12		11	1-1/2	3/4	3/4	3	16	6-1/4	11/16	1/2-13
36U32T	364U	324T	1	1-3/4	11-1/4		10-1/2		1-3/4	3/4	3/4	3-1/2	16-3/4	7	11/16	5/8-11
	364U	326T	1	1-3/4	11-1/4			12	1-3/4	3/4	3/4	3-1/2	16-3/4	7	11/16	5/8-11
	365U	324T	1	1-3/4		12-1/4	10-1/2		1-3/4	3/4	3/4	3-1/2	16-3/4	7	11/16	5/8-11
	365U	326T	1	1-3/4		12-1/4		12	1-3/4	3/4	3/4	3-1/2	16-3/4	7	11/16	5/8-11
40U36T	404U	364T	1	2	12-1/4		11-1/4		2	1	1-1/4	4	18-3/4	8	13/16	5/8-11
	404U	365T	1	2	12-1/4			12-1/4	2	1	1-1/4	4	18-3/4	8	13/16	5/8-11
	405U	364T	1	2		13-3/4	11-1/4		2	1	1-1/4	4	18-3/4	8	13/16	5/8-11
	405U	365T	1	2		13-3/4		12-1/4	2	1	1-1/4	4	18-3/4	8	13/16	5/8-11
44U40T	444U	404T	1	2-1/4	14-1/2		12-1/4		2-1/4	1	1-1/4	4	22	9	13/16	3/4-10
	444U	405T	1	2-1/4	14-1/2			13-3/4	2-1/4	1	1-1/4	4	22	9	13/16	3/4-10
	445U	404T	1	2-1/4		16-1/2	12-1/4		2-1/4	1	1-1/4	4	22	9	13/16	3/4-10
	445U	405T	1	2-1/4		16-1/2		13-3/4	2-1/4	1	1-1/4	4	22	9	13/16	3/4-10
44U36T	444U	364T	2	4-3/8	14-1/2		11-1/4		2-1/8	2	1	4-3/4	24	9	13/16	5/8-11
	444U	365T	2	4-3/8	14-1/2			12-1/4	2-1/8	2	1	4-3/4	24	9	13/16	5/8-11
	445U	364T	2	4-3/8		16-1/2	11-1/4		2-1/8	2	1	4-3/4	24	9	13/16	5/8-11
	445U	365T	2	4-3/8		16-1/2		12-1/4	2-1/8	2	1	4-3/4	24	9	13/16	5/8-11

Dimensions are in inches

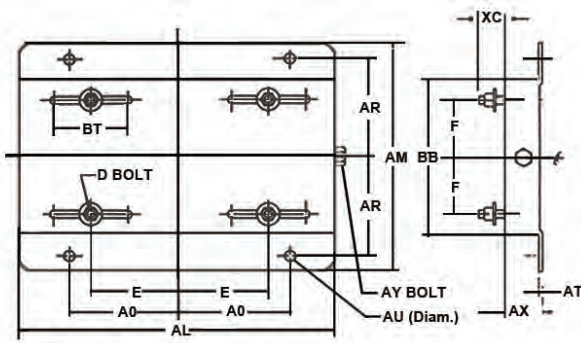
NEMA Adjustable Motor Bases Single Adjusting Bolt

Notes:

- Bases Noted (x) are also Available In Standard Stock Double Adjusting Style
- Adjusting Bolts on Double Adjusting Style Bases are in Line 'D Bolts' on 'F' Dimension
- Made in USA



All Models

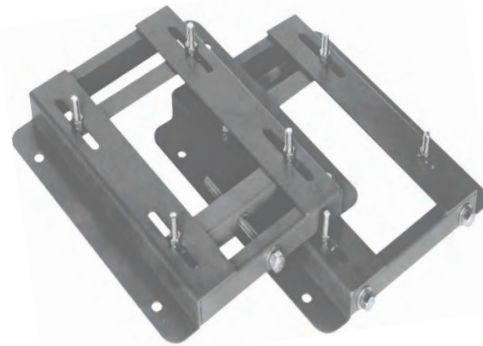


Frame & Part Number	AL	AM	AX	BB	E	F	AO	AR	AU	BT	AT	XC	D Bolt	AY Bolt	Wgt. (lbs)
SASB56	10-5/8	6-1/2	1-1/8	4-1/2	2-7/16	1-1/2	3-13/16	2-7/8	3/8	3	0.078	7/8	5/16x1	3/8x4	3
SASB66	12	8-1/2	1-1/8	6-1/2	3-1/8	2-1/2	4-1/2	3-7/8	3/8	3	0.078	7/8	5/16x1	3/8x4	4
SASB143T x	10-1/2	7-1/2	1-1/8	5-1/2	2-3/4	2	3-3/4	3-3/8	3/8	3	0.119	13/16	5/16x1	3/8x4	5
SASB145T x	10-1/2	8-1/2	1-1/8	6-1/2	2-3/4	2-1/2	3-3/4	3-7/8	3/8	3	0.119	13/16	5/16x1	3/8x4	6
SASB182T x	12-3/4	9-1/2	1-1/2	6-1/2	3-3/4	2-1/4	4-1/2	4-1/4	1/2	3	0.134	1-1/2	3/8x1-3/4	1/2x6	9
SASB184T x	12-3/4	10-1/2	1-1/2	7-1/2	3-3/4	2-3/4	4-1/2	4-3/4	1/2	3	0.134	1-1/2	3/8x1-3/4	1/2x6	9-1/2
SASB213T x	15	11	1-3/4	7-1/2	4-1/4	2-3/4	5-1/4	4-3/4	1/2	3-1/2	0.164	1-1/2	3/8x1-3/4	1/2x6	13-1/2
SASB215T x	15	12-1/2	1-3/4	9	4-1/4	3-1/2	5-1/4	5-1/2	1/2	3-1/2	0.164	1-1/2	3/8x1-3/4	1/2x6	15-1/2

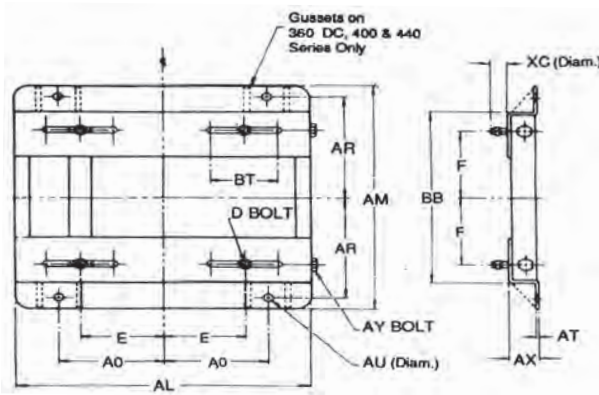
NEMA Adjustable Motor Bases Double Adjusting Bolt

Notes:

- Bases Noted (x) are also Available with Gussets for Additional Strength; add the Letter "G" after the Part Number. Example: "DASB324T-G"
- Made in USA



All Models



Frame & Part Number	AL	AM	AX	BB	E	F	AO	AR	AU	BT	AT	XC	D Bolt	AY Bolt	Wgt. (lbs)
DASB182T	12-3/4	9-1/2	1-1/2	6-1/2	3-3/4	2-1/4	4-1/2	4-1/4	1/3x9/16	3	0.134	1-1/2	---	---	9
DASB184T	12-3/4	10-1/2	1-1/2	7-1/2	3-3/4	2-3/4	4-1/2	4-3/4	1/3x9/16	3	0.134	1-1/2	---	---	10
DASB213T	15	11	1-3/4	7-1/2	4-1/4	2-3/4	5-1/4	4-3/4	1/2x9/16	3-1/2	0.164	1-1/2	---	---	14
DASB215T	15	12-1/2	1-3/4	9	4-1/4	3-1/2	5-1/4	5-1/2	1/2x9/16	3-1/2	0.164	1-1/2	---	---	16
DASB254T	17-3/4	15-1/8	2	10-3/4	5	4-1/8	6-1/4	6-5/8	5/8	4	3/16	1-3/8	1/2x1-3/4	5/8x9	17
DASB256T	17-3/4	16-7/8	2	12-1/2	5	5	6-1/4	7-1/2	5/8	4	3/16	1-3/8	1/2x1-3/4	5/8x9	18
DASB284T	19-3/4	16-7/8	2	12-1/2	5-1/2	4-3/4	7	7-1/2	5/8	4-1/2	3/16	1-5/8	1/2x2	5/8x9	21
DASB286T	19-3/4	18-3/8	2	14	5-1/2	5-1/2	7	8-1/4	5/8	4-1/2	3/16	1-5/8	1/2x2	5/8x9	22
DASB324T x	22-3/4	19-1/4	2-1/2	14	6-1/4	5-1/4	8	8-1/2	3/4	5-1/4	3/16	2-1/8	5/8x2-1/2	3/4x9	30
DASB326T x	22-3/4	20-3/4	2-1/2	15-1/2	6-1/4	6	8	9-1/4	3/4	5-1/4	3/16	2-1/8	5/8x2-1/2	3/4x9	31
DASB364T x	25-1/2	20-1/2	2-1/2	15-1/2	7	5-5/8	9	9-1/8	3/4	6	1/4	2	5/8x2-1/2	3/4x11	45
DASB365T x	25-1/2	21-1/2	2-1/2	16-1/2	7	6-1/8	9	9-5/8	3/4	6	1/4	2	5/8x2-1/2	3/4x11	46
DASB404T	28-3/4	22-3/8	3	16-1/2	8	6-1/8	10	9-7/8	7/8	7	1/4	2-9/16	3/4x3	3/4x14	55
DASB405T	28-3/4	23-7/8	3	18	8	6-7/8	10	10-5/8	7/8	7	1/4	2-9/16	3/4x3	3/4x14	56
DASB444T	31-1/4	24-5/8	3	19-1/4	9	7-1/4	11	11	7/8	7-1/2	5/16	2-1/2	3/4x3	3/4x14	74
DASB445T	31-1/4	26-5/8	3	21-1/4	9	8-1/4	11	12	7/8	7-1/2	5/16	2-1/2	3/4x3	3/4x14	75
DASB447T	31-1/4	30-1/8	3	24-3/4	9	10	11	13-3/4	7/8	7-1/2	5/16	2-1/2	3/4x3	3/4x14	89
DASB449T	31-1/4	35-1/8	3	29-3/4	9	12-1/2	11	16-1/4	7/8	7-1/2	5/16	2-1/2	3/4x3	3/4x14	95

Index - Stock Number to Page

Stock #	Page	Stock #	Page	Stock #	Page
1479	41	‡ 36U32T	58	DC515	59
1495	41	‡ 40U36T	58	DC516	59
11811	38	‡ 44U36T	58	DC517	59
‡ 12026	38	‡ 44U40T	58	E004	21, 34
‡ 12027	11, 38	‡ 5BD1076	29, 41	E015	29
‡ 16230	19	‡ 5BD1106	20, 41	‡ ECR161	6
‡ 56342	34	‡ 950-1020	37	‡ ECR501	6
56343	34	‡ 950-1021	37	‡ ECR502	6
56344	34	‡ 950-1022	37	F006	21
‡ 56345	34	‡ A2000	17	F026	34
56346	34	BF101	4	‡ F062	15, 28
‡ 56347	11, 34	BF102	4	‡ FD127	46
‡ 56348	34	BF51	4	‡ FD128	46
‡ 60024	34	BF52	4	‡ FD129	46
‡ 60030	35	BF61	4	‡ FD12A	46
‡ 60076	35	BF62	4	‡ FD141C	45
‡ 63699	35	BFC24	4	‡ FD142C	45
‡ 63745	35	BFC36	4	‡ FD143C	45
63746	35	‡ C06E2A	31	‡ FD144C	45
‡ 63747	35	‡ C07E4A	31	‡ FD145C	45
‡ 63748	35	‡ C09E4A	31	‡ FD146C	45
‡ 63749	35	‡ DASB182T	64	‡ FD147C	45
‡ 63750	35	‡ DASB184T	64	‡ FD161C	45
‡ 63751	35	‡ DASB213T	64	‡ FD162C	45
‡ 63752	35	‡ DASB215T	64	‡ FD163C	45
‡ 63821	35	‡ DASB254T	64	‡ FD164C	45
87219	36	‡ DASB256T	64	‡ FD165C	45
‡ 131410	8, 36	‡ DASB284T	64	‡ FD166C	45
‡ 148053	8, 36	‡ DASB286T	64	‡ FD176	45
‡ 148055	8, 36	‡ DASB324T	64	‡ FD176C	45
‡ 30080058	19	‡ DASB326T	64	FD177	46
‡ 30080135	19	‡ DASB364T	64	FD178	46
‡ 99080481	19	‡ DASB365T	64	‡ FD179	46
‡ 99080482	19	‡ DASB404T	64	‡ FD17A	46
‡ 99080483	19	‡ DASB405T	64	FG10	4
‡ 99080484	19	‡ DASB444T	64	FG5	4
‡ 99080485	19	‡ DASB445T	64	FG6	4
‡ 99080486	19	‡ DASB447T	64	FLEX50	42
‡ 99080487	19	‡ DASB449T	64	FLEX55	42
‡ 99080488	19	DC500	59	G004	29
1223A	41, 42, 43	DC501	59	‡ G018	15, 21
1330A	43	DC502	59	G156	31
1364A	41, 42, 43	DC503	59	‡ HD60FE575	20
‡ 1814T	58	DC504	59	‡ J011	16, 21
‡ 2118T	58	DC511	59	J020	31
‡ 25U21T	58	DC512	59	J055	28, 29
‡ 28U25T	58	DC513	59	JM607	58
‡ 32U28T	58	DC514	59	JM608	58

Stock #	Page	Stock #	Page	Stock #	Page
JM60A	58	‡ ORP675	48	‡ SS1459	56
JM617	58	‡ ORP676	48	‡ SS1462	56
JM627	58	‡ ORP677	48	SS174	14, 24
JM629	58	‡ ORP678	48	SS201	12, 17, 33
JM657	58	‡ ORP679	48	SS202	12, 33
JM658	58	‡ ORP67A	48	SS203	12, 32, 33
JM659	58	P1000-B4	20	SS205	10, 29
JM65A	58	POC10-1	42, 43	SS206	12, 17, 32
‡ MA1074	20, 35	POC15-1	41, 42	SS207	12, 32, 33
MO-019	34	POC25-1	41	SS208	12, 26
MO-020	34	POC5-1	42, 43	SS209	12, 32, 33
MO-022	34	POC7.5-1	42, 43	SS210	13, 21, 24
‡ MS605C	60	‡ RMT0004	35	SS212B	13, 21, 24
‡ MS606C	60	‡ RMT0005	35	SS212S	13, 21, 34
‡ MS607C	60	‡ RMT0062	18, 35	SS213	12, 21, 24, 37
‡ MS608C	60	‡ SASB143T	63	SS214	12, 32, 33
‡ MS609C	60	‡ SASB145T	63	SS215	13, 21
‡ MS60AC	60	‡ SASB182T	63	SS217	13, 21, 24, 34
‡ MS612C	60	‡ SASB184T	63	SS219	12, 33
‡ MS613C	60	‡ SASB213T	63	SS220	12, 30, 32
‡ MS614C	60	‡ SASB215T	63	‡ SS2224	31
‡ MS655C	60	‡ SASB56	63	‡ SS2269	29
‡ MS656C	60	‡ SASB66	63	SS230	12, 20, 21
‡ MS657C	60	SS008	14, 25	SS232	12, 33
‡ MS658C	60	‡ SS030	10	SS235	12, 39
‡ MS659C	60	SS101	7, 25	SS236	12, 39
‡ MS65AC	60	SS101L	7, 25	SS2360	16, 36, 39
‡ MS661C	60	SS103	7, 25	‡ SS2380	16, 36, 39
‡ MS662C	60	SS103L	7, 25	SS2398	15, 26
‡ MS663C	60	SS108	7, 28, 30	‡ SS2497	15, 31
‡ MS664C	60	SS119	7, 25	SS250	7, 39
‡ MS665C	60	SS120	7, 25	SS260	12, 35
‡ MS666C	60	SS122	7, 21, 25	SS2603	14, 35
‡ MS702C	60	SS123	7, 28	SS2604	14, 35
‡ MS703C	60	SS124	7, 22, 25	SS2605	15, 35
‡ MS704C	60	SS125	7, 22, 25	SS2609	14, 28
OR547	46	SS127	7, 25	SS2612	14, 28
OR548	46	SS130	11, 18	SS2615	16, 36, 39
‡ ORP654	48	SS133	7, 31	SS262	12, 26, 35
‡ ORP655	48	‡ SS1332	9, 11	SS264	12, 35
‡ ORP656	48	‡ SS1350	56	‡ SS2655	34
‡ ORP657	48	‡ SS1352	56	SS2657	14, 29
‡ ORP658	48	‡ SS1354	56	SS2658	14, 24, 29
‡ ORP659	48	‡ SS1355	56	SS266	12, 35
‡ ORP65A	48	‡ SS1356	56	‡ SS2799	37, 38
‡ ORP65B	48	SS137	7, 21	SS2930	15, 26
‡ ORP65C	48	‡ SS1444	56	SS2932	15, 26
‡ ORP674	48	‡ SS1446	56	SS2940	15, 26

Index - Stock Number to Page

Stock #	Page	Stock #	Page	Stock #	Page
SS2942	15, 26	SS403	12, 23, 32	‡ SS740B	43
SS300	10, 18	SS408	11, 24, 30	‡ SS749	44
SS302	11, 18, 24	SS409	10, 24, 26	‡ SS750	44
SS303	10, 19, 37	SS413	11, 30	‡ SS751	44
SS304	10, 33	‡ SS4200	31	‡ SS752	42
SS305	10, 33	‡ SS438	38	‡ SS753	42
SS307	10, 29, 33	SS440	13, 24, 33	‡ SS754	42
SS3100	1, 33	‡ SS462	11, 38	‡ SS799	37, 38
SS3101	1, 33	SS467	11, 33	SS801	12, 33
SS3103	1, 24, 33	SS480	11, 21	‡ SS8318	15, 27
SS311	10, 33	‡ SS486	44	‡ SS9316	19
SS313	10, 29, 37	SS506	12, 33, 39	‡ SS9317	19
SS315	10, 33	SS510	11, 19, 24, 39	‡ SS933	40
SS318	10, 18	‡ SS5109	5	‡ SS933D	40
SS319	10	SS511	13, 18, 24	‡ SS934	40
‡ SS3234	31	‡ SS5200	31	‡ SS934B	40
‡ SS324	11, 19, 23	‡ SS5211	5	‡ SS934D	40
‡ SS326	10, 18	‡ SS5212	5	‡ SS935	40
SS332	10, 18	‡ SS5221	5	‡ SS935B	40
SS336	10, 39	‡ SS5222	5	‡ SS935D	40
‡ SS34201	28	‡ SS5311	5	‡ SS936D	40
‡ SS348	38	‡ SS5312	5	‡ SS9428	22
SS350	10, 31	‡ SS5411	5	SS958	14, 26
SS355	10, 33	‡ SS5412	5	‡ SS9721	18
SS356	10, 17, 24, 26	‡ SS5421	5	‡ SS973	42
SS357	10, 24, 26	‡ SS5422	5	‡ SS974	42
SS358	10, 18	‡ SS574	18	‡ TA604	49
‡ SS3583	42	‡ SS575	18	‡ TA604C	51
‡ SS3584	42	‡ SS5811	5	‡ TA605	49
‡ SS3585	42	‡ SS5812	5	‡ TA605C	51
‡ SS3586	42	‡ SS5821	5	‡ TA606	49
‡ SS3587	42	‡ SS5822	5	‡ TA606C	51
‡ SS3588	42	SS601	1, 33	‡ TA607	49
‡ SS3589	42	SS603	1, 17, 33	‡ TA607C	51
SS359	11, 18, 24	SS604	1, 33	‡ TA624	49
‡ SS3590	42	SS605	1, 18, 25, 33, 38	‡ TA624C	51
SS360	10, 29	SS610	1, 32, 33, 37	‡ TA625	49
SS3670	1, 17, 21, 33	SS611	1, 21, 28, 33	‡ TA625C	51
SS368	10, 24, 35	SS613	1, 33	‡ TA626	49
SS369	11, 24, 35	SS617	1, 21	‡ TA626C	51
SS370	10, 24, 29	‡ SS6264	31	‡ TA627	49
SS371	11, 24, 29	‡ SS630	1, 35	‡ TA627C	51
‡ SS3727	43	‡ SS635	1, 21	‡ TA654	50
‡ SS3728	43	‡ SS647	44	‡ TA654C	52
‡ SS3729	18, 43	‡ SS671	9, 11	‡ TA655	50
‡ SS3730	18, 43	‡ SS672	9, 11	‡ TA655C	52
‡ SS3731	43	‡ SS6920	16, 36, 39	‡ TA656	50
SS401	12, 23	‡ SS739B	18, 43	‡ TA656C	52

Stock #	Page	Stock #	Page	Stock #	Page
‡ TA674	50	UB160	2, 3, 17, 23, 25, 26, 27	‡ WA633	49
‡ TA674C	52	UB168	2, 3, 27	‡ WA633C	51
‡ TA675	50	UB200T-2	2, 3, 22	‡ WA633J	57
‡ TA675C	52	UB265	2, 3, 17, 23, 25, 26, 27	‡ WA634	49
‡ TA676	50	UB3	2, 3, 23, 25, 32	‡ WA634C	51
‡ TA676C	52	UB33	2, 3, 22, 27, 32	‡ WA634J	57
‡ TCP657	55	UB4	2, 3, 23, 25	‡ WA635	49
‡ TCP658	55	UB465	2, 3, 17, 23, 25, 26, 27	‡ WA635C	51
‡ TCP659	55	UB5	2, 3, 23, 25	‡ WA635J	57
‡ TCP65A	55	‡ UB579	2, 3, 36	‡ WA636	49
‡ TCP65B	55	‡ UFB189	2, 3	‡ WA636C	51
‡ TCP65C	55	‡ UFB500	2, 3, 22, 23, 27	‡ WA636J	57
‡ TCP65D	55	‡ UFM3714	8, 20, 26	‡ WA637	49
‡ TCP65E	55	‡ UFM410	8, 24, 36	‡ WA637C	51
‡ TCP65F	55	‡ UFM653	8, 20, 26, 39	‡ WA637J	57
‡ TCP65G	55	‡ UFM78	8, 26, 36	‡ WA661	50
‡ TCP65H	55	‡ VENT-100	4	‡ WA661C	52
‡ TCP65I	55	‡ VENT-150	4	‡ WA662	50
‡ TCP65J	55	‡ VENT-200	4	‡ WA662C	52
‡ TCP65K	55	‡ VENT-250	4	‡ WA663	50
‡ TCP65L	55	‡ VENT-315	4	‡ WA663C	52
‡ TCP65M	55	‡ WA611	49	‡ WA664	50
‡ TRP605	54	‡ WA611C	51	‡ WA664C	52
‡ TRP606	54	‡ WA611J	57	‡ WA665	50
‡ TRP607	54	‡ WA612	49	‡ WA665C	52
‡ TRP608	54	‡ WA612C	51	‡ WA666	50
‡ TRP609	54	‡ WA612J	57	‡ WA666C	52
‡ TRP60A	54	‡ WA613	49	‡ WA681	50
‡ TRP654	54	‡ WA613C	51	‡ WA681C	52
‡ TRP655	54	‡ WA613J	57	‡ WA682	50
‡ TRP656	54	‡ WA614	49	‡ WA682C	52
‡ TRP657	54	‡ WA614C	51	‡ WA683	50
‡ TRP658	54	‡ WA614J	57	‡ WA683C	52
‡ TRP659	54	‡ WA615	49	‡ WA684	50
‡ TRP65A	54	‡ WA615C	51	‡ WA684C	52
‡ TRP674	54	‡ WA615J	57	‡ WA685	50
‡ TRP675	54	‡ WA616	49	‡ WA685C	52
‡ TRP676	54	‡ WA616C	51	‡ WA686	50
‡ TRP677	54	‡ WA616J	57	‡ WA686C	52
‡ TRP678	54	‡ WA617	49	‡ WD661	47
‡ TRP679	54	‡ WA617C	51	‡ WD662	47
‡ TRP67A	54	‡ WA617J	57	‡ WD663	47
‡ TRP704	54	‡ WA631	49	‡ WD664	47
‡ TRP705	54	‡ WA631C	51	‡ WD665	47
‡ TRP706	54	‡ WA631J	57	‡ WD666	47
‡ TRP707	54	‡ WA632	49	‡ WD682	47
‡ TRP708	54	‡ WA632C	51	‡ WD683	47
‡ UB1	2, 3, 23, 25	‡ WA632J	57	‡ WD684	47

Stock #	Page
WD685	47
WD686	47
WE612C	53
WE613C	53
WE614C	53
WE615C	53
WE616C	53
WE617C	53
WE661C	53
WE662C	53
WE663C	53
WE664C	53
WE665C	53
WE666C	53
WE681C	53
WE682C	53
WE683C	53
WE684C	53
WE685C	53
WE686C	53
‡ WGR050	61
‡ WGR063	61

INTEGRITY OF CATALOG: The information contained in this catalog is for reference purposes only. We strive to ensure that the information is as accurate and current as possible. We are in no way responsible for any errors that may arise. We reserve the right to change specifications and other information included without prior notice. If you are concerned about the validity of the information on a certain product, please visit www.omnidrive.ca and contact us.

DISCLAIMER: All content offered from or available in our catalog are provided to you on an “as is” basis, without representations, warranties or conditions of any kind. You acknowledge and agree that any reliance by you on any information available in this catalog shall be at your own risk.

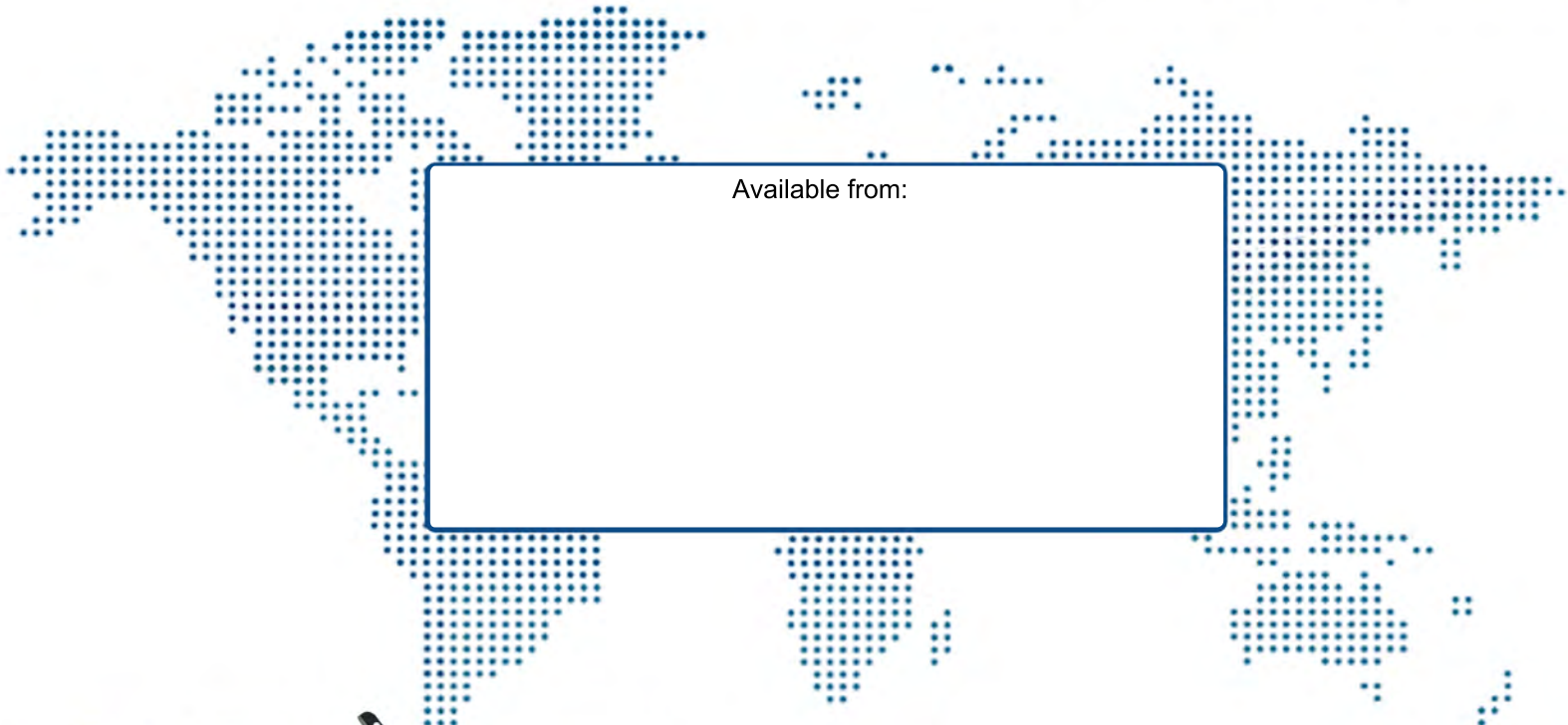
In no event shall OmniDrive be liable for any consequential, incidental, or any other damages. OmniDrive is also no way liable for any loss of profits the company may face. If for whatever reason, OmniDrive may face an accusation, OmniDrive’s liability does not exceed the purchase price of the equipment involved. All users are solely responsible to evaluate and acknowledge that the goods purchased will suitably meet the requirements of their intended use.

COPYRIGHT AND TRADEMARKS: OmniDrive is a registered trademark. It is owned and operated by 1279311 Ontario Inc. OmniDrive, the OmniDrive logo; images and layouts are and shall remain the trade-marks and exclusive property of OmniDrive. Any misuses of these marks are unlawful.

All rights reserved. You may not produce, copy, modify or redistribute the design or layout of the OmniDrive catalog.

It is important to note that OmniDrive is not affiliated with any of the original equipment manufacturers or their brands which may be referred to herein. Other trade-marks featured in this catalog are the property of their respective owners. No association between OmniDrive and any trademark holder is expressed or implied. The names, numbers, symbols and descriptions featured throughout this catalog are for cross reference purposes only.

BULLETIN # OD-513



Available from:

