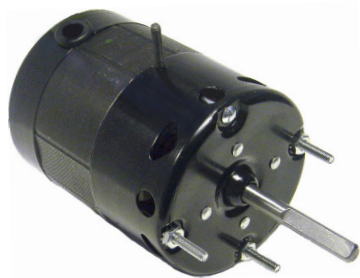


OMNIDRIVE

Tjernlund

OEM Replacement Motor

 New Product



950-1020



950-1021 



950-1022 

- Drop in Replacements for Tjernlund OEM Motors
- Long Life Self Aligning Sleeve & Ball Bearings
- Shaded Pole & P.S.C. Designs
- (*) Indicates Motors are P.S.C Design
- (●) Indicates Motors are Ball Bearing

Stock #	Diameter	HP	Volts	Amps.	RPM	"A"	Shaft	Rotation	Replaces
950-1020	3.3"	1/25	115	1.37	3000	4.20"	5/16" x 2.25"	CCWSE	950-1020
950-1021 *	3.3"	1/7	115	1.50	3300	5.42"	3/8" x 2.25"	CCWSE	950-1021
950-1022 ●*	5.5"	1/5	115	2.80	1700	4.87"	1/2" x 3.40"	CCWSE	950-1022



UNIVERSAL ELECTRIC MOTORS

DIVISION OF 1279311 ONTARIO INC.

6200 Dixie Road, Unit 1, Mississauga, Ontario, L5T 2E1

Tel: (905) 670-3380 - Toll free: 1-877-670-3380 - Fax: (905) 670-7637

WWW.UEM.CA - INFO@UEM.CA

