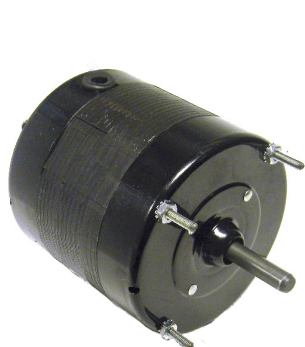


OMNIDRIVE

4.1" Diameter

Totally Enclosed Construction

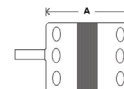
Exhaust Fans, Coolers, Heaters & Condensers



SS008



SS2609 - SS2612



- Continuous Duty
- Class "A" insulation
- UL Listed & CSA Approved
- Shaded pole
- Thermally protected
- 60 Hz.
- Sleeve Bearings
- (●) indicates motors are ball bearing

Stock #	HP	Volts	Amps.	RPM	"A"	Shaft	Rotation	Comments	Replaces
SS008 ●	1/12	230	1.30	1550	3.94"	3/8" x 1.82"	CCWSE	13" Leads	Franklin, 75008
SS2609	1/30	115	1.21	1550	2.92"	1/2" x 2.35"	CCWSE	Conduit Box	Inter-City
SS2612	1/30	115	1.21	1550	2.92"	1/2" x 2.35"	CWSE	Conduit Box	Inter-City



UNIVERSAL ELECTRIC MOTORS

DIVISION OF 1279311 ONTARIO INC.

6200 Dixie Road, Unit 1, Mississauga, Ontario, L5T 2E1

Tel: (905) 670-3380 - Toll free: 1-877-670-3380 - Fax: (905) 670-7637

WWW.UEM.CA - INFO@UEM.CA

