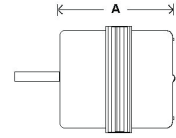


OMNIDRIVE

3.3" Diameter Open Construction

Kitchen/Bathroom Fans, Humidifiers/Dehumidifiers, Unit Heaters, Unit Coolers & Display Cases



SS307 - SS313 - SS332
SS336 - SS360 - SS368



SS358



SS315 - SS355



SS300 - SS356 - SS357



SS318 - SS326



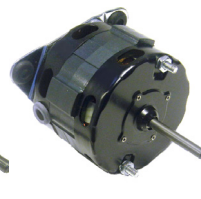
SS030



SS370



SS303



SS205



SS304 - SS319
SS305 - SS350 - SS409



SS311

- Continuous duty
- Class 'B' insulation
- UL Listed & CSA Approved
- (*) Indicates motors are P.S.C.

- Thermally protected
- 60 Hz
- Shaded pole & Sleeve bearing motors
- (•) Indicates motors are ball bearing

Stock #	HP	Volts	Amps.	RPM	"A"	Shaft	Rotation	Comments	Replaces
SS313 •	1/15	115	2.20	1550	3.58"	5/16" x 3.00"	CWSE	12" Lyall Cord & Plug	Bohn / Torin / Kraack
SS355 •	1/15	115	2.20	1550	3.11"	5/16" x 1.90"	CCWSE	Hex Hubs	Nutone
SS358	1/15	115	2.20	1550	3.35"	5/16" x 3.20"	CWSE	12" Lyall Cord & Plug - Hex Hubs	Blanchard / Bohn
SS318	1/20	115	1.60	1550	2.84"	5/16" x 2.75"	CCWSE	"U" Bracket - Grooved Shaft	Blanchard
SS336	1/20	115	1.80	1550	2.50"	1/4" x 1.17"	CWSE	2 Bolts Opposite Shaft End	Woods
SS356	1/20	115	1.80	1550	2.59"	5/16" x 2.30"	CWSE	12" Leads	General Replacement
SS357	1/20	115	1.80	1550	2.59"	5/16" x 2.30"	CCWSE	12" Leads	General Replacement
SS368	1/20	115	1.80	1550	2.84"	5/16" x 2.75"	CCWSE	15" Lyall Cord & Plug	Ref-Plus
SS370 *	1/20	115	0.77	1550	4.09"	5/16" x 2.71"	CCWSE	Lyall Cord & Plug	Keeprite
SS300	1/25	115	1.80	1550	2.59"	5/16" x 2.50"	CWSE	12" Leads	Blanchard
SS030	1/25	115	1.70	1550	2.75"	5/16" x 2.57"	CWSE	12" Leads	General Replacement
SS303	1/25	115	1.50	1550	3.77"	5/16" x 3.28"	CWSE	C/Box & Triangle Bracket	Caloritech / Trane
SS307	1/25	115	1.45	3000	3.30"	1/4" x 1.30"	CWSE	9" Lyall Cord & Plug	Keeprite / Nutone
SS332	1/25	115	1.50	1550	2.59"	5/16" x 1.50"	CCWSE	12" Leads	Blanchard / Bohn
SS360	1/35	115	1.00	1550	2.50"	1/4" x 1.60"	CCWSE	3 Bolts S.E.	Keeprite
SS205	1/37	115	1.20	1575	2.75"	1/4" x 1.75"	CCWSE	Triangle Bracket	Keeprite
SS304	1/40	115	0.89	1550	2.47"	1/4" x 1.50"	CCWSE	12" Leads	Nutone
SS305	1/50	115	1.00	2800	2.33"	1/4" x 1.50"	CCWSE	9" Cord & Plug, Grooved shaft	Nutone
SS319	1/50	120	0.90	1430	2.09"	1/4" x 2.22"	CWSE	18" Cord & Plug	Dehumidifier
SS409	1/50	115	1.30	1550	2.12"	5/16" x 1.56"	CWSE	19" Leads	General Replacement
SS326	1/85	115	0.50	1550	1.90"	1/4" x 1.45"	CCWSE	"U" Bracket	Blanchard / Bohn
SS311	1/100	115	0.65	1550	2.09"	1/4" x 1.20"	CCWSE	6" Cord & Plug - Hex Hubs	Nutone
SS315	1/100	120	0.50	1550	2.09"	1/4" x 1.20"	CWSE	Cord & Plug - Hex Hubs Grooved Shaft	Nutone
SS350	----	115	1.20	1050	2.89"	5/16" x 1.50"	CCWSE	2 Speed	MarkHot



UNIVERSAL ELECTRIC MOTORS

DIVISION OF 1279311 ONTARIO INC.

6200 Dixie Road, Unit 1, Mississauga, Ontario, L5T 2E1

Tel: (905) 670-3380 - Toll free: 1-877-670-3380 - Fax: (905) 670-7637

WWW.UEM.CA - INFO@UEM.CA

