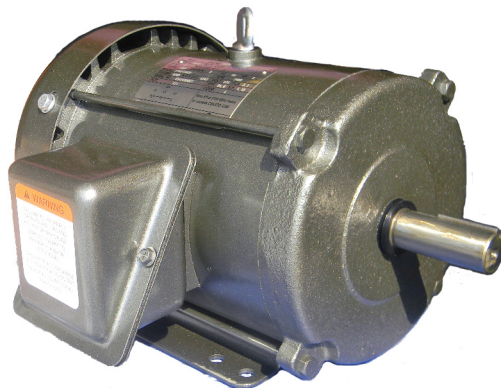
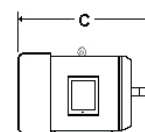


# OMNIDRIVE

## NEMA Premium Three Phase Motors Rolled Steel TEFC



All Models



- Rolled Steel Construction
- Ball Bearing
- Continuous Duty
- Class 'F' Insulation
- UL Listed & CSA approved
- 40°C Ambient
- Rigid Base
- Dual Mounting Holes in Base

Stock #	Frame	HP	Volts	Amps.	RPM	"C"	S.F.	Efficiency
TRP674	143T	1	208-230 / 460	3.00 / 1.50	1800	13.00"	1.15	85.5%
TRP654	143T	1	575	1.30	1800	13.00"	1.15	85.5%
TRP704	143T	1	575	1.40	1200	13.00"	1.15	87.5%
TRP605	143T	1.5	575	1.68	3600	13.00"	1.15	84.0%
TRP675	145T	1.5	208-230 / 460	4.80 / 2.40	1800	13.00"	1.15	86.5%
TRP655	145T	1.5	575	1.80	1800	13.00"	1.15	86.5%
TRP705	182T	1.5	575	2.02	1200	15.70"	1.15	87.5%
TRP606	145T	2	575	2.10	3600	13.25"	1.15	85.5%
TRP676	145T	2	208-230 / 460	6.00 / 3.00	1800	13.00"	1.15	86.5%
TRP656	145T	2	575	2.40	1800	13.00"	1.15	86.5%
TRP706	184T	2	575	2.64	1200	15.50"	1.15	88.5%
TRP607	182T	3	575	2.10	3600	13.00"	1.15	86.5%
TRP677	182T	3	208-230 / 460	19.20 / 9.60	1800	15.70"	1.15	89.5%
TRP657	182T	3	575	3.40	1800	15.70"	1.15	89.5%
TRP707	213T	3	575	3.92	1200	19.20"	1.15	89.5%
TRP608	184T	5	575	5.00	3600	15.70"	1.15	88.5%
TRP678	184T	5	208-230 / 460	12.40 / 6.20	1800	15.82"	1.15	89.5%
TRP658	184T	5	575	5.20	1800	15.70"	1.15	89.5%
TRP708	215T	5	575	6.00	1200	19.20"	1.15	89.5%
TRP609	213T	7.5	575	7.40	3600	19.20"	1.15	89.5%
TRP679	213T	7.5	208-230 / 460	19.20 / 9.60	1800	18.72"	1.15	91.7%
TRP659	213T	7.5	575	8.00	1800	19.20"	1.15	91.7%
TRP60A	215T	10	575	9.60	3600	19.20"	1.15	90.2%
TRP67A	215T	10	208-230 / 460	19.20 / 9.60	1800	19.20"	1.15	91.7%
TRP65A	215T	10	575	10.40	1800	19.20"	1.15	91.7%



### UNIVERSAL ELECTRIC MOTORS

DIVISION OF 1279311 ONTARIO INC.

6200 Dixie Road, Unit 1, Mississauga, Ontario, L5T 2E1

Tel: (905) 670-3380 - Toll free: 1-877-670-3380 - Fax: (905) 670-7637

WWW.UEM.CA - INFO@UEM.CA

