

OMNIDRIVE

Ouellet

OEM Replacement Motors



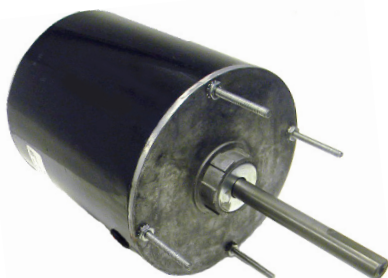
SS217



SS212S - MO-019



MO-020



MO-022



E004



F026

- Drop in Replacements for many Ouellet OEM Motors
- Self Aligning Sleeve or Ball Bearings
- TEAO Construction
- Thermally Protected
- Shaded Pole Design
- (●) Indicates Motors are Ball Bearing

Stock #	Diameter	HP	Volts	Amps.	RPM	"A"	Shaft	Rotation	Replaces
SS212S	3.3"	1/35	230	0.55	1550	2.80"	5/16" x 3.50"	CWSE	MOT03
SS217	3.3"	1/40	230	0.50	1550	2.30"	1/4" x 1.50"	CCWSE	MOT04
MO-019	3.3"	1/25	240	0.70	1550	2.75"	5/16" x 3.50"	CWSE	JA2P265
MO-020 ●	3.3"	1/30	240	0.64	1550	2.88"	5/16" x 1.50"	CCWSE	JB2P080
MO-022 ●	5.5"	1/3	575 - 3Ø	0.68	1140	6.37"	1/2" x 4.56"	REV.	12348-001
E004 ●	5.5"	1/6	575 - 3Ø	0.30	1140	3.80"	1/2" x 4.60"	REV.	3J124HAX
F026 ●	5.5"	1/3	480 / 575 -1Ø	0.90	1725	4.32"	1/2" x 4.13"	CWSE	PCA1800-61-1, MOT07



UNIVERSAL ELECTRIC MOTORS

DIVISION OF 1279311 ONTARIO INC.

6200 Dixie Road, Unit 1, Mississauga, Ontario, L5T 2E1

Tel: (905) 670-3380 - Toll free: 1-877-670-3380 - Fax: (905) 670-7637

WWW.UEM.CA - INFO@UEM.CA

