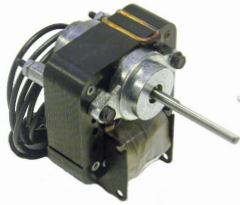
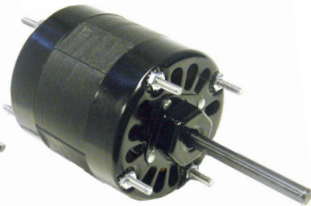


# OMNIDRIVE

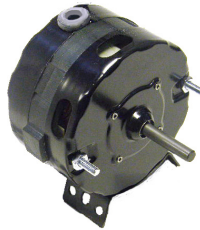
## Blanchard-Ness, Hussmann OEM Replacement Motors



SS605



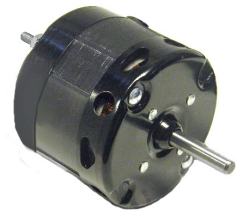
SS358 - SS359



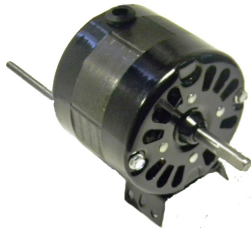
SS318 - SS326



SS300



SS332



SS130



SS302



SS511



SS739B



RMT0062

- Drop in Replacement for many Blanchard-Ness (Hussman) Motors
- Long Life Self Aligning Sleeve & Sealed Ball Bearings
- Shaded Pole, P.S.C. & 3 Phase Design
- Open or TEAO Construction

• (•) Indicates Motors are Ball Bearing

Stock #	Diameter	HP	Volts	Amps.	RPM	"A"	Shaft	Rotation	Replaces
SS605	Skeleton	---	120	1.00	2800	5/8"	3/16" x 1-3/4"	CCWSE	79103, 79104, E1014
SS358	3.3"	1/15	115	2.20	1550	3.32"	5/16" x 3.20"	CWSE	50011, E1008, E1052, E1055/8
SS318	3.3"	1/20	115	1.60	1550	2.85"	5/16" x 2.80"	CCWSE	79105, 5010S, E1007, E1057
SS359	3.3"	1/20	208 - 230	1.10	1550	3.35"	5/16" x 3.20"	CWSE	5008T, 503414, E1009, E1053/6/9
SS300	3.3"	1/25	115	1.80	1550	2.59"	5/16" x 2.50"	CWSE	E1068
SS332	3.3"	1/25	115	1.50	1550	2.59"	5/16" x 1.50"	CCWSE	79107, 5001F
SS130	3.3"	1/45	230	0.80	1550	2.71"	5/16" x 1.50"	CCWSE	79106, 79108, 79113, 5001M
SS326	3.3"	1/85	115	0.50	1550	1.90"	1/4" x 1.45"	CCWSE	79101, E1001, E1002, E1003
SS302	3.3"	1/100	240	0.30	1400	2.00"	1/4" x 1.50"	CCWSE	E1004
SS511	3.3"	1/100	240	0.28	1350	2.10"	1/4" x 2.00"	CCWSE	79115
SS739B •	5.5"	1/4	208 - 230	1.70	825	4.25"	1/2" x 6-1/2"	REV.	E1026
RMT0062	56Y	1-1/2	575	2.50	860	10.50"	5/8" x 2.50"	REV.	E5039



UNIVERSAL ELECTRIC MOTORS

DIVISION OF 1279311 ONTARIO INC.

6200 Dixie Road, Unit 1, Mississauga, Ontario, L5T 2E1

Tel: (905) 670-3380 - Toll free: 1-877-670-3380 - Fax: (905) 670-7637

WWW.UEM.CA - INFO@UEM.CA

