

OMNIDRIVE

Franklin

OEM Replacement Motors



UB1



UB4



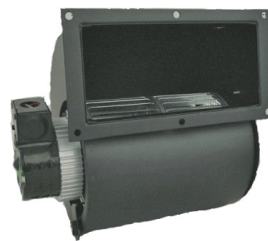
UB5



UB160



UB265



UB465



SS008

- Drop in Replacements for many Franklin Motors & Blowers
- Shaded Pole Design
- Self Aligning Sleeve & Ball Bearings
- Thermally Protected
- (●) Indicates Motors are Ball Bearing

Stock #	Diameter	HP	Volts	Amps.	RPM	"C"/"A"	Shaft	CFM/Rotation	Replaces
UB1	Blower	1/30	115	1.20	2700	8.30"	----	140	76001
UB4	Blower	1/40	120	0.88	3000	5.50"	----	100	76004, 80042
UB5	Blower	1/125	115	0.40	1550	4.94"	----	50	B30, 76005, 80239
UB160	Blower	1/33	120	1.10	1550	6.59"	----	160	50755-D500, 80611
UB265	Blower	1/25	115	1.40	1550	7.00"	----	265	B45227, 80224, 8214117524
UB465	Blower	1/15	115	2.60	1550	10.50"	----	465	B45267
SS008 ●	4.1"	1/12	230	1.30	1550	3.94"	3/8" x 1.82"	CCWSE	75008



UNIVERSAL ELECTRIC MOTORS

DIVISION OF 1279311 ONTARIO INC.

6200 Dixie Road, Unit 1, Mississauga, Ontario, L5T 2E1

Tel: (905) 670-3380 - Toll free: 1-877-670-3380 - Fax: (905) 670-7637

WWW.UEM.CA - INFO@UEM.CA

