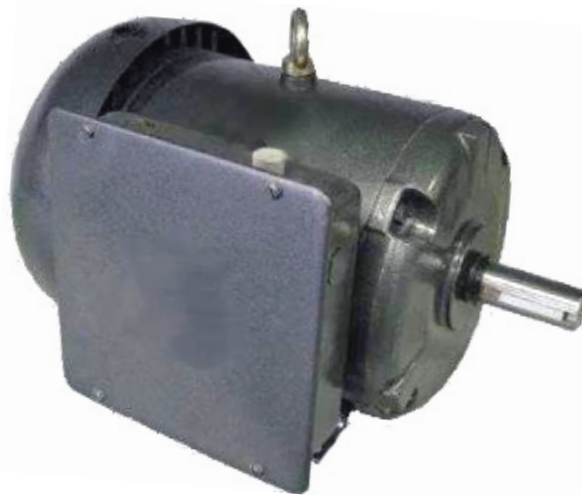
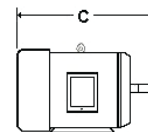


OMNIDRIVE

General Purpose & Farm Duty Single Phase Motors Rolled Steel TEFC



All Models



- Continuous Duty
- Class 'F' Insulation
- Reversible
- UL Listed & CSA Approved
- 'C' Face Kits Available
- 40°C Ambient
- Rigid Base - Dual Mounting Holes
- Capacitor Start/Run
- Rolled Steel Construction
- Ball Bearings

Stock #	Frame	HP	Volts	Amps	RPM	Hz.	"C"	S.F.	Comments
FD127	182T	3	208-230	12.40 - 14.00	3600	60	16.70"	1.15	Manual Overload
FD128	184T	5	208-230	23.00 - 20.00	3600	60	16.70"	1.15	Manual Overload
FD129	213T	7.5	208-230	31.50 - 29.00	3600	60	16.70"	1.15	No Overload
FD12A	215T	10	208-230	43.00 - 39.00	3600	60	20.30"	1.15	No Overload
FD177	182T	3	208-230	14.50 - 12.60	1800	60	16.70"	1.15	Manual Overload
FD178	184T	5	208-230	22.80 - 20.10	1800	60	18.10"	1.15	Manual Overload
FD179	213T	7.5	208-230	33.00 - 30.00	1800	60	20.30"	1.15	No Overload
FD17A	215T	10	208-230	42.00 - 38.10	1800	60	20.30"	1.15	No Overload



UNIVERSAL ELECTRIC MOTORS

DIVISION OF 1279311 ONTARIO INC.

6200 Dixie Road, Unit 1, Mississauga, Ontario, L5T 2E1

Tel: (905) 670-3380 - Toll free: 1-877-670-3380 - Fax: (905) 670-7637

WWW.UEM.CA - INFO@UEM.CA

