

OMNIDRIVE

Fasco

OEM Replacement Motors



UB3



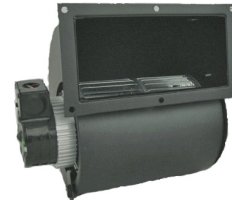
UB5



UB160



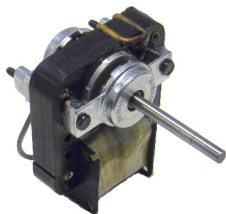
UB265



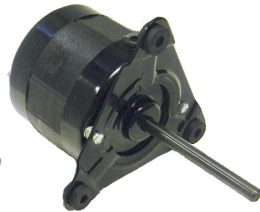
UB465



UFB500



SS3103



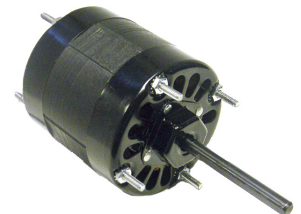
SS212B



SS213



SS356 - SS357



SS359

- Drop in Replacements for many Fasco Motors
- Shaded Pole & P.S.C. Designs
- Open & TEAO Construction
- Thermally Protected
- (●) Indicates Motors are Ball Bearing

Stock #	Diameter	HP	Volts	Amps.	RPM	"C"	Shaft	CFM	Replaces
UB3	Blower	1/50	120	0.80	3000	5-1/2"	----	100	B24220
UB5	Blower	1/125	115	0.40	1550	4.94"	----	50	B30
UB160	Blower	1/33	120	1.10	1550	6.50"	----	160	50755-D500
UB265	Blower	1/25	115	1.40	1550	7.00"	----	265	B45227
UB465	Blower	1/15	115	2.60	1550	10-1/2"	----	465	B45267
UFB500	Blower	1/33	115	1.10	2860	6.00"	----	140	850752-D500
SS3103	Skeleton	----	120	0.81	3000	0.75"	7/32" x 2-7/16"	CCWSE	K109
SS212B ●	3.3"	1/35	230	0.55	1550	2.80"	5/16" x 3.50"	CWSE	D1118
SS213	3.3"	1/25	115	1.40	1550	3.10"	5/16" x 1.78"	CWSE	D184
SS356	3.3"	1/20	115	1.80	1550	2.59"	5/16" x 2.30"	CWSE	D132
SS357	3.3"	1/20	115	1.80	1550	2.59"	5/16" x 2.30"	CCWSE	D133
SS359	3.3"	1/20	208 - 230	1.10	1550	3.35"	5/16" x 3.20"	CWSE	D1126



UNIVERSAL ELECTRIC MOTORS

DIVISION OF 1279311 ONTARIO INC.

6200 Dixie Road, Unit 1, Mississauga, Ontario, L5T 2E1

Tel: (905) 670-3380 - Toll free: 1-877-670-3380 - Fax: (905) 670-7637

WWW.UEM.CA - INFO@UEM.CA



OMNIDRIVE

Fasco

OEM Replacement Motors



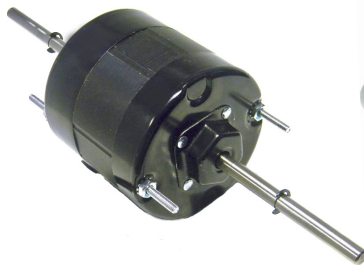
SS368 - SS369



SS370 - SS371



SS409 - SS510



SS440



UFM410



SS174



SS2658

- Drop in Replacements for many Fasco motors
- Shaded Pole & P.S.C. Designs
- Sleeve & Ball Bearings
- Open & TEAO Construction
- Thermally Protected
- (*) Indicates Motors are P.S.C Design
- (●) Indicates Motors are Ball Bearing
- (~) Indicates Motors are Double Shafted

Stock #	Diameter	HP	Volts	Amps.	RPM	"C"/"A"	Shaft	CFM/Rotation	Replaces
SS368	3.3"	1/20	115	1.80	1550	2.88"	5/16" x 2.80"	CCWSE	D1101
SS369	3.3"	1/20	208 - 230	0.95	1550	2.82"	5/16" x 2.75"	CCWSE	D1103
SS370 ●*	3.3"	1/20	115	0.77	1550	4.10"	5/16" x 2.71"	CCWSE	D1243
SS371 ●*	3.3"	1/20	230	0.37	1550	4.10"	5/16" x 2.71"	CWSE	D1245
SS409	3.3"	1/50	115	1.30	1550	2.12"	5/16" x 1.60"	CWSE	D126
SS440 ~	3.3"	1/20	120	1.60	1550	3.16"	3.80" x 5/16" x 3.80"	CWLE	D1163
SS510 ~	3.3"	1/50	120	1.10	1250	2.12"	1.19" x 1/4" x 1.53"	CWLE	D1134
UFM410 ●*	3.3"	1/10	115 / 230	1.40 / 0.70	3000	7.12"	1/4" x 3.75"	REV.	D410
SS174	4.1"	1/10	115	3.40	1450	3.25"	3/8" x 3.20"	CWSE	D174
SS2658	4.1"	1/15	115	2.30	1550	3.42"	3/8" x 2.44"	CCWSE	D1246



UNIVERSAL ELECTRIC MOTORS

DIVISION OF 1279311 ONTARIO INC.

6200 Dixie Road, Unit 1, Mississauga, Ontario, L5T 2E1

Tel: (905) 670-3380 - Toll free: 1-877-670-3380 - Fax: (905) 670-7637

WWW.UEM.CA - INFO@UEM.CA

