

RESCUE® ECM Watt Motor

Refrigeration Evaporator and Condensing Applications



Part Number: EC5411D, EC5412D

Horsepower: 4 to 25 Watts

Speed Range: 1550 to 1725 RPM applications

Rated Voltages: 115V-230V

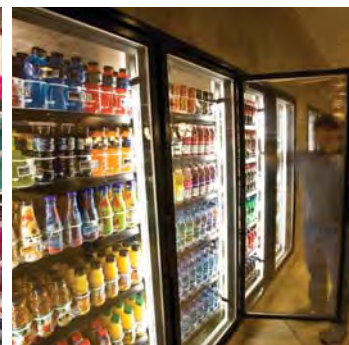
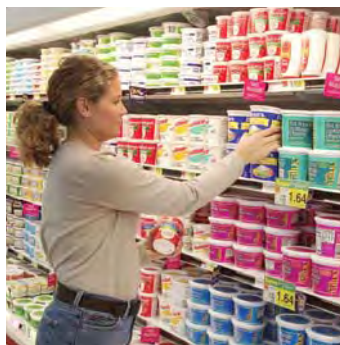
Temperature Rating: -40°C to +55°C (-40°F to +130°F)

Amps: 0.20 to 0.75

Hertz: Rated 50/60 Hz

Enclosure: Totally Enclosed Air Over (TEAO)

Warranty: 2 years from installation



Product Overview and Options

The new RESCUE® ECM watt motor is the next addition of the RESCUE® motor family to support the refrigeration contractor. It covers a range of wattage and speed specifications, thereby reducing your inventory. It is packaged with the adapters for single and four post fan hubs.

The back of the motor features the holes to support various OEM evaporator mounting brackets and two sets of mounting feet for condenser mounting.

What is IP67?

"IP" means "Ingress Protection" rating. The numbers describe the level of protection versus solids and liquids.

First digit: 6

- **Ingress of solids:** "Dust Tight" protection against entry of dust.

Second digit: 7

- **Ingress of liquids:** Protection against "heavy seas or a strong jet of water from all practicable directions and submersible for short periods of time."
- **Submersible design:** In situations where the drains are unknowingly clogged (which typically leads to premature motor failure due to over exposure to liquids), rest assured, the robust design of the Rescue ECM watt motor will handle these extreme conditions. It is capable of operating while the motor is surrounded in noncorrosive liquids, for up to 30 minutes in as much as 3 feet deep.

Product Features:

- IP67: Capable of being submerged in water up to 30 minutes
- Suitable for use in Evaporator and Condenser Applications
- High Efficiency up to 70%
- Universal Mounting
- Standard 3 hole style/Hussmann 4 hole on back of motor
- Dual Voltage: No connection change required
- Thermally Protected
- Robust Ball Bearing System
- Aluminum Frame
- Standard Shaft Size 1/4-20 thread
- Operating Temperature Range: -40°C to 55°C
- Meets ATEX Directive 94/9/EC



EC5411D
and EC5412D

RESCUE® ECM Walk-in Evaporator Motors



High Efficiency ECM Refrigeration Motor designed for Walk-in Coolers / Freezer Applications

Product Overview

Product Features:

- IP66 Dust Tight with All Angle Moisture Protection
- Suitable for use in Evaporator
- High Efficiency up to 70%
- UL/CUL Approved
- Operating Temperature Range -40°C to 55°C
- Dual Voltage: No Connection Change Required
- Rated 50/60 Hertz
- Body Style - Low Profile
- Standard 10-32 Thread Mounting Studs
- 27" cord Lyall/OEM Plug
- Thermally Protected
- Robust Ball Bearing System
- Rear Stud Mount Adaptor Kit #42 and 42T
- 90° Cable Adaptor Kit #40
- Meets ATEX Directive 94/9/EC



EC5404D and EC5405D

HP	RPM/ Spds	Voltage	Catalog Number	Amps*	Rotation	Shaft Height	Total Length	Shaft Diameter	Ship Weight
4-25W	1550-1725	115-230	EC5411D	.22 -.75@115V	CWOSE	0.43	2.9	0.250	2.0
4-25W	1550-1725	115-230	EC5412D	.15 -.45@230V	CCWOSE	0.43	2.9	0.250	2.0
1/15-1/25 (50W-30W)	1550-1625	115-230	EC5404D	.60-.72@115V	CWOSE	2.00	4.9	0.313	3.0
1/15-1/25 (50W-30W)	1550-1625	115-230	EC5405D	.40-.67@230V	CCWOSE	2.00	4.9	0.313	3.0

* Amp draw varies by voltage, applies to both ratings in group.

† All marks shown within this document are properties of their respective owners.

Nidec Motor Corporation, 2015; All Rights Reserved. U.S. MOTORS® is a registered trademark of Nidec Motor Corporation.
Nidec Motor Corporation trademarks followed by the ® symbol are registered with the U.S. Patent and Trademark Office.