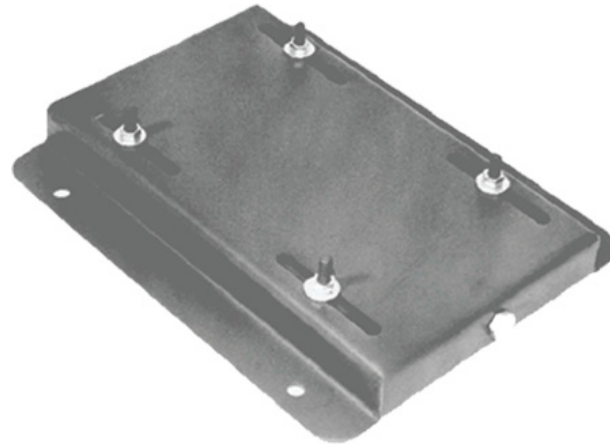
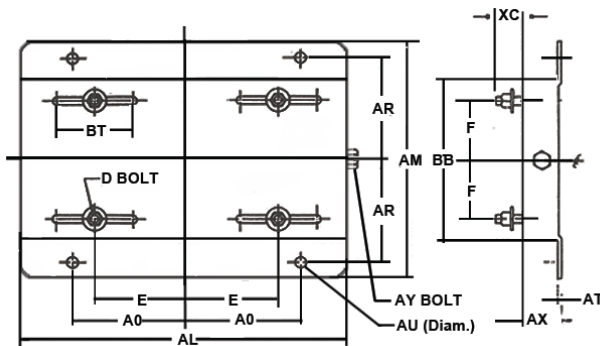


NEMA Adjustable Motor Bases Single Adjusting Bolt



Frame & Part Number	AL	AM	AX	BB	E	F	AO	AR	AU	BT	AT	XC	D Bolt	AY Bolt	Wgt. (lbs)
SASB56	10-5/8	6-1/2	1-1/8	4-1/2	2-7/16	1-1/2	3-13/16	2-7/8	3/8	3	0.078	7/8	5/16x1	3/8x4	3
SASB66	12	8-1/2	1-1/8	6-1/2	3-1/8	2-1/2	4-1/2	3-7/8	3/8	3	0.078	7/8	5/16x1	3/8x4	4
SASB143T *	10-1/2	7-1/2	1-1/8	5-1/2	2-3/4	2	3-3/4	3-3/8	3/8	3	0.119	13/16	5/16x1	3/8x4	5
SASB145T *	10-1/2	8-1/2	1-1/8	6-1/2	2-3/4	2-1/2	3-3/4	3-7/8	3/8	3	0.119	13/16	5/16x1	3/8x4	6
SASB182T *	12-3/4	9-1/2	1-1/2	6-1/2	3-3/4	2-1/4	4-1/2	4-1/4	1/2	3	0.134	1-1/2	3/8x1-3/4	1/2x6	9
SASB184T *	12-3/4	10-1/2	1-1/2	7-1/2	3-3/4	2-3/4	4-1/2	4-3/4	1/2	3	0.134	1-1/2	3/8x1-3/4	1/2x6	9-1/2
SASB213T *	15	11	1-3/4	7-1/2	4-1/4	2-3/4	5-1/4	4-3/4	1/2	3-1/2	0.164	1-1/2	3/8x1-3/4	1/2x6	13-1/2
SASB215T *	15	12-1/2	1-3/4	9	4-1/4	3-1/2	5-1/4	5-1/2	1/2	3-1/2	0.164	1-1/2	3/8x1-3/4	1/2x6	15-1/2

Notes:

- Weight is measured in pounds
- Bases noted (*) are also available in Standard
- Stock double adjusting style A2
- Adjusting bolts on style A2 bases are in line D Bolts on F dimension
- Custom built available & made in USA