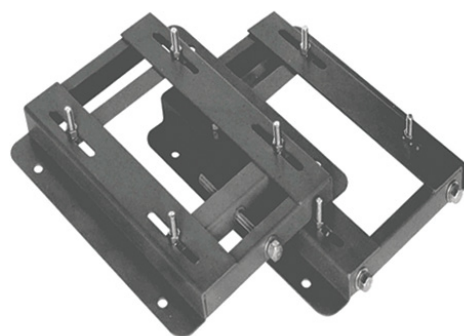
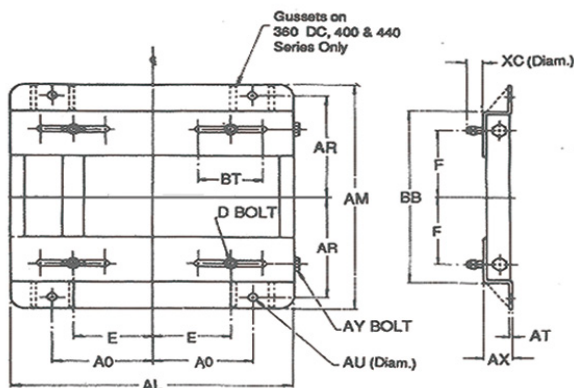


NEMA Adjustable Motor Bases Double Adjusting Bolt



Frame & Part Number	AL	AM	AX	BB	E	F	AO	AR	AU	BT	AT	XC	D Bolt	AY Bolt	Wgt. (lbs)
DASB182T	12-3/4	9-1/2	1-1/2	6-1/2	3-3/4	2-1/4	4-1/2	4-1/4	1/3x9/16	3	0.134	1-1/2	---	---	9
DASB184T	12-3/4	10-1/2	1-1/2	7-1/2	3-3/4	2-3/4	4-1/2	4-3/4	1/3x9/16	3	0.134	1-1/2	---	---	10
DASB213T	15	11	1-3/4	7-1/2	4-1/4	2-3/4	5-1/4	4-3/4	1/2x9/16	3-1/2	0.164	1-1/2	---	---	14
DASB215T	15	12-1/2	1-3/4	9	4-1/4	3-1/2	5-1/4	5-1/2	1/2x9/16	3-1/2	0.164	1-1/2	---	---	16
DASB254T	17-3/4	15-1/8	2	10-3/4	5	4-1/8	6-1/4	6-5/8	5/8	4	3/16	1-3/8	1/2x1-3/4	5/8x9	17
DASB256T	17-3/4	16-7/8	2	12-1/2	5	5	6-1/4	7-1/2	5/8	4	3/16	1-3/8	1/2x1-3/4	5/8x9	18
DASB284T	19-3/4	16-7/8	2	12-1/2	5-1/2	4-3/4	7	7-1/2	5/8	4-1/2	3/16	1-5/8	1/2x2	5/8x9	21
DASB286T	19-3/4	18-3/8	2	14	5-1/2	5-1/2	7	8-1/4	5/8	4-1/2	3/16	1-5/8	1/2x2	5/8x9	22
DASB324T *	22-3/4	19-1/4	2-1/2	14	6-1/4	5-1/4	8	8-1/2	3/4	5-1/4	3/16	2-1/8	5/8x2-1/2	3/4x9	30
DASB326T *	22-3/4	20-3/4	2-1/2	15-1/2	6-1/4	6	8	9-1/4	3/4	5-1/4	3/16	2-1/8	5/8x2-1/2	3/4x9	31
DASB364T *	25-1/2	20-1/2	2-1/2	15-1/2	7	5-5/8	9	9-1/8	3/4	6	1/4	2	5/8x2-1/2	3/4x11	45
DASB365T *	25-1/2	21-1/2	2-1/2	16-1/2	7	6-1/8	9	9-5/8	3/4	6	1/4	2	5/8x2-1/2	3/4x11	46
DASB404T	28-3/4	22-3/8	3	16-1/2	8	6-1/8	10	9-7/8	7/8	7	1/4	2-9/16	3/4x3	3/4x14	55
DASB405T	28-3/4	23-7/8	3	18	8	6-7/8	10	10-5/8	7/8	7	1/4	2-9/16	3/4x3	3/4x14	56
DASB444T	31-1/4	24-5/8	3	19-1/4	9	7-1/4	11	11	7/8	7-1/2	5/16	2-1/2	3/4x3	3/4x14	74
DASB445T	31-1/4	26-5/8	3	21-1/4	9	8-1/4	11	12	7/8	7-1/2	5/16	2-1/2	3/4x3	3/4x14	75
DASB447T	31-1/4	30-1/8	3	24-3/4	9	10	11	13-3/4	7/8	7-1/2	5/16	2-1/2	3/4x3	3/4x14	89
DASB449T	31-1/4	35-1/8	3	29-3/4	9	12-1/2	11	16-1/4	7/8	7-1/2	5/16	2-1/2	3/4x3	3/4x14	95

Notes:

- Weight is measured in pounds
- Bases noted (*) are also available with gussets for additional strength; Add the letter "G" after the part number. Example "DASB324T-G"
- Made in USA