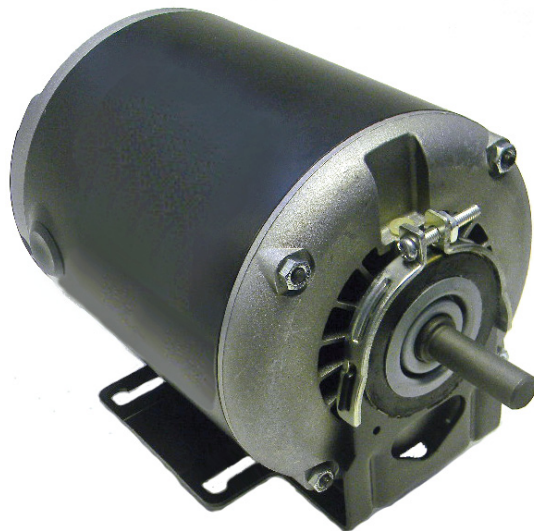


# OMNIDRIVE

 **New Product**

## 48 Frame

### Split Phase Belt Drive Motors



All Models

- 60 Hz
- Reversible Rotation
- Single Speed
- 40°C Ambient Rating
- Class 'B' Insulation
- Resilient Base has 48 & 56 Frame Mounting Holes
- Open Drip-Proof
- Single & Dual Voltage
- Automatic Overload
- Continuous Duty
- 1/2" to 5/8" Sleeve & Key Included
- (\*) Indicates Motors are Ball Bearing

Stock #	Frame	HP	Volts	Amps.	RPM	"A"	Shaft	Rotation	Hz.
SS933	48Y	1/4	115	4.80	1725	6.81"	1/2" x 1.50"	REV.	60
SS934	48Y	1/3	115	6.60	1725	6.81"	1/2" x 1.50"	REV.	60
SS935	48Y	1/2	115	8.30	1725	7.76"	1/2" x 1.50"	REV.	60
SS934B *	48Y	1/3	115	6.60	1725	6.81"	1/2" x 1.50"	REV.	60
SS935B *	48Y	1/2	115	7.60	1725	6.81"	1/2" x 1.50"	REV.	60
SS933D *	48/56	1/4	115/208-230	4.60/2.20-2.10	1725	6.75"	1/2" x 1.88"	REV.	60
SS934D *	48/56	1/3	115/208-230	6.60/3.40-3.10	1725	6.75"	1/2" x 1.88"	REV.	60
SS935D *	48/56	1/2	115/208-230	7.60/3.70-3.80	1725	8.58"	1/2" x 1.88"	REV.	60
SS936D *	56H	3/4	115/208-230	11.60/5.90-5.80	1725	10.55"	5/8" x 1.88"	REV.	60



**UNIVERSAL ELECTRIC MOTORS**

DIVISION OF 1279311 ONTARIO INC.

6200 Dixie Road, Unit 1, Mississauga, Ontario, L5T 2E1

Tel: (905) 670-3380 - Toll free: 1-877-670-3380 - Fax: (905) 670-7637

WWW.UEM.CA - INFO@UEM.CA

